

MARIPOSAS DIURNAS (Papilionoidea) de La Minga (Choachí - Cundinamarca - Colombia)



ACOLEP
Asociación Colombiana
de Lepidopterología

1*

Fredy Montero Abril 1 & Maira Ortiz Perez 2



N: 4° 31' 55.08" – W: 73° 56' 07.44"

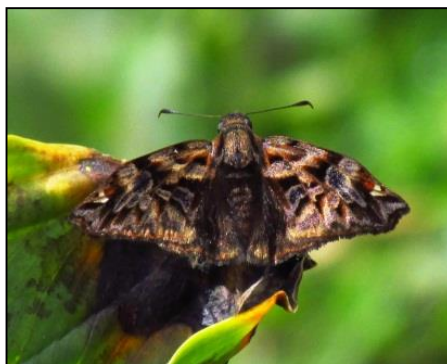
Altitud: 2350 msnm.

1,2 Investigadores Asociación Colombiana de Lepidopterología, ACOLEP, Bogotá, Colombia, email: curimontero@yahoo.es; biomayortiz@hotmail.com
Abreviaturas y símbolos utilizados: Cop: copula; Ovp: Oviposición; ♂: Macho; ♀: Hembra. [fieldguides.fieldmuseum.org] [783] versión 1 05/2016
Fotografías logradas en el sitio por los autores. Producido por **Fredy Montero A.**, con el apoyo para la identificación de los taxa de **Jean F. Le Crom**, **Cristobal Rios**, **Maurizio Bollino** y **Andres Orellana**.

* Busque por el número 2 de la serie [782] en la pagina del Field Museum



1. *Achlyodes pallida* ♂
Hesperiidae - Pyrginae



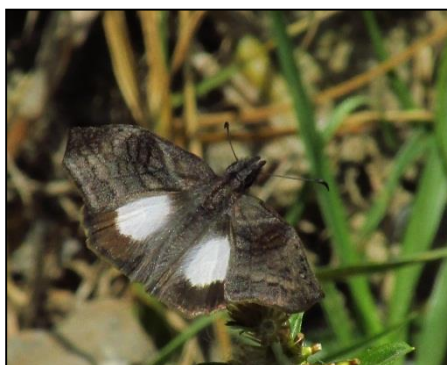
2. *Noctuana haematospila* ♂
Hesperiidae - Pyrginae



2. *Noctuana haematospila* ♂
Hesperiidae - Pyrginae



3. *Bolla atahualpai* ♂
Hesperiidae - Pyrginae



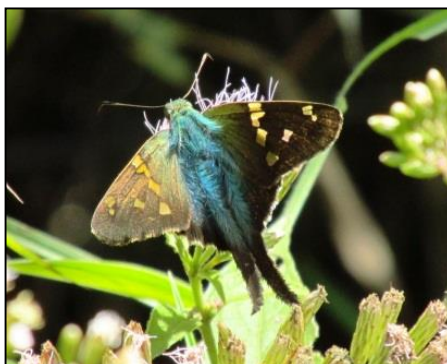
4. *Theagenes albiplaga* ♂
Hesperiidae - Pyrginae



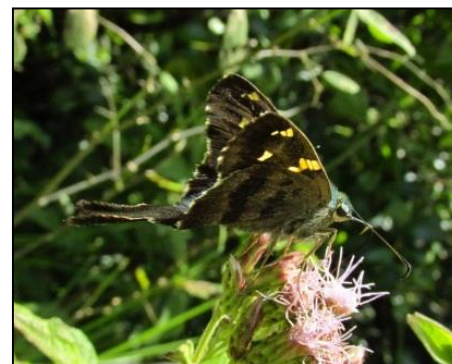
4. *Theagenes albiplaga* ♂
Hesperiidae - Pyrginae



5. *Pyrgus communis adepta* ♂
Hesperiidae - Pyrginae



6. *Urbanus pronus* ♂
Hesperiidae - Pyrginae



6. *Urbanus pronus* ♂
Hesperiidae - Pyrginae



7. *Urbanus tanna* ♂
Hesperiidae - Pyrginae



8. *Urbanus dorantes* ♂.
Hesperiidae - Pyrginae



9. *Dalla* sp. ♂
Hesperiidae - Heteropterinae



10. *Dalla frontinia* ♂
Hesperiidae - Heteropterinae



10. *Dalla frontinia* ♂
Hesperiidae - Heteropterinae



11. *Ancyloxypha melanoneura* ♂
Hesperiidae - Hesperinae



12. *Polites vibex* ♂
Hesperiidae - Hesperinae



13. *Psoralis degener* ♂
Hesperiidae - Hesperinae



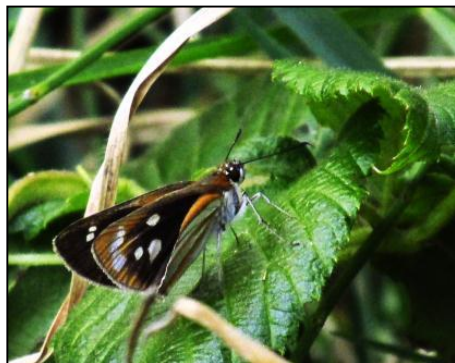
14. *Serdis viridicans pandra* ♂
Hesperiidae - Hesperinae



15. *Serdis venezuelae fractifascia*. ♂
Hesperiidae - Hesperinae



16. *Vettius coryna catargyra* ♂
Hesperiidae - Hesperinae



16. *Vettius coryna catargyra* ♂
Hesperiidae - Hesperinae



17. *Thespieus othna othna* ♂
Hesperiidae - Hesperinae



18. *Thoon* sp. ♂
Hesperiidae - Hesperinae



18. *Thoon* sp. ♂
Hesperiidae - Hesperinae



19. *Heliopetes laviana* ♂
Hesperiidae - Pyrginae



19. *Heliopetes laviana* ♂
Hesperiidae - Pyrginae



20. *Astraptes* sp.
Hesperiidae - Eudaminae



21. *Papilio polyxenes* ♂
Papilionidae - Papilioninae



21. *Papilio polyxenes* ♂
Papilionidae - Papilioninae



22. *Dismorphia hyposticta*
Pieridae – Dismorphiinae



23. *Dismorphia medora medora* Cop.
Pieridae – Dismorphiinae



24. *Lieinix nemesis* ♂
Pieridae – Dismorphiinae



25. *Colias dimera* ♂
Pieridae – Coliadinae



26. *Eurema salome fabiola* ♂
Pieridae – Coliadinae



27. *Phoebis philea* ♂
Pieridae – Coliadinae



28. *Catasticta troezena troezenides* ♂
Pieridae – Pierinae



29. *Catasticta sisamnus bithyna* ♂
Pieridae – Pierinae



30. *Leptophobia eleone* Cop.
Pieridae – Pierinae



31. *Greta andromica* ♂
Nymphalidae – Danainae



32. *Danaus plexippus* ♂
Nymphalidae – Danainae



32. *Danaus plexippus* ♂
Nymphalidae – Danainae



33. *Altopedaliodes bacarra* ♂
Nymphalidae – Satyrinae



34. *Corades enyo enyo* ♀
Nymphalidae – Satyrinae



34. *Corades enyo enyo* ♂
Nymphalidae – Satyrinae



35. *Corades medeba columbina* Cop.
Nymphalidae – Satyrinae



36. *Euptychoides griphe* ♂
Nymphalidae – Satyrinae



36. *Euptychoides griphe* ♂
Nymphalidae – Satyrinae



37. *Lymanopoda lecromi* ♂
Nymphalidae – Satyrinae



38. *Lasiophila zapatosa meridae* ♂
Nymphalidae – Satyrinae



38. *Lasiophila zapatosa meridae* ♂
Nymphalidae – Satyrinae



38. *Lasiophila zapatosa meridae* ♀
Nymphalidae – Satyrinae



39. *Mygona irmina* ♂
Nymphalidae – Satyrinae



39. *Mygona irmina* ♂
Nymphalidae – Satyrinae



40. *Panyapedaliodes drymaea* ♀
Nymphalidae – Satyrinae



40. *Panyapedaliodes drymaea* ♀
Nymphalidae – Satyrinae



40. *Panyapedaliodes drymaea* ♀
Nymphalidae – Satyrinae



40. *Panyapedaliodes drymaea* ♀
Nymphalidae – Satyrinae



41. *Pedaliodes fuscata* ♂
Nymphalidae – Satyrinae



41. *Pedaliodes fuscata* ♂
Nymphalidae – Satyrinae



42. *Pedaliodes manis* ♂
Nymphalidae – Satyrinae



43. *Pedaliodes poesia* ♀
Nymphalidae – Satyrinae



44. *Pronophila orcus* ♂
Nymphalidae – Satyrinae



45. *Eretris apuleja* ♂
Nymphalidae – Satyrinae



46. *Steremnia pronophila pronophila* ♂
Nymphalidae – Satyrinae



47. *Cybdelis mnasylyus* ♂
Nymphalidae – Biblidinae



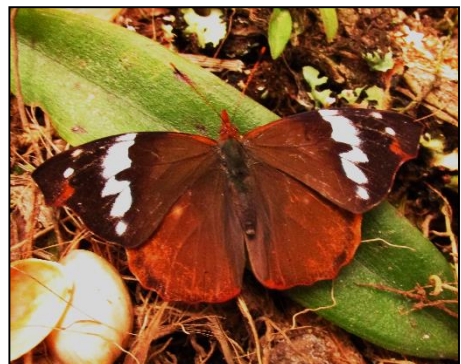
47. *Cybdelis mnasylyus* ♂
Nymphalidae – Biblidinae



48. *Epiphile epimenes* ♂
Nymphalidae – Biblidinae



48. *Epiphile epimenes* ♂
Nymphalidae – Biblidinae



48. *Epiphile epimenes* ♀
Nymphalidae – Biblidinae



49. *Orophila campaspe* ♂
Nymphalidae – Biblidinae



49. *Orophila campaspe* ♀
Nymphalidae – Biblidinae



50. *Marpesia zerynthia* ♂
Nymphalidae – Biblidinae



51. *Marpesia corinna* ♂
Nymphalidae – Biblidinae



51. *Marpesia corinna* ♀
Nymphalidae – Biblidinae



52. *Hypanartia dione* ♂
Nymphalidae – Nymphalinae



52. *Hypanartia dione* ♂
Nymphalidae – Nymphalinae



53. *Hypanartia kefersteini kefersteini* ♂
Nymphalidae – Nymphalinae



53. *Hypanartia kefersteini kefersteini* ♀
Nymphalidae – Nymphalinae



54. *Hypanartia lethe* ♂
Nymphalidae – Nymphalinae



54. *Hypanartia lethe* ♀
Nymphalidae – Nymphalinae



55. *Anartia amathea* ♂
Nymphalidae – Nymphalinae



56. *Janatella fellula* ♂
Nymphalidae – Nymphalinae



56. *Janatella fellula* ♂
Nymphalidae – Nymphalinae



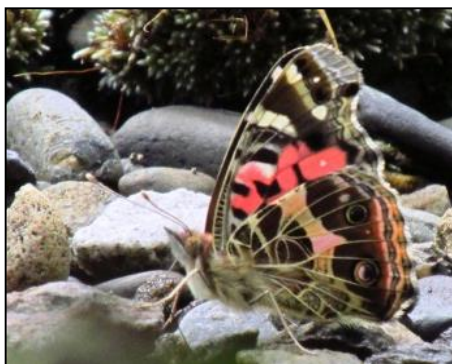
57. *Siproeta epaphus* ♂
Nymphalidae – Nymphalinae



57. *Siproeta epaphus* ♂
Nymphalidae – Nymphalinae



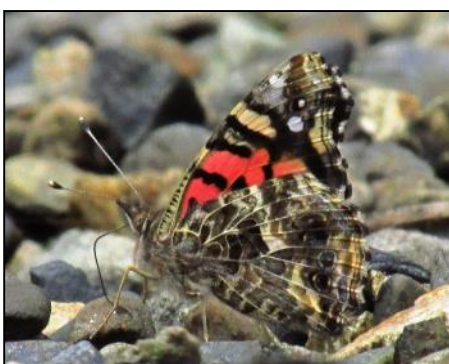
58. *Vanessa braziliensis* ♂
Nymphalidae – Nymphalinae



58. *Vanessa braziliensis* ♂
Nymphalidae – Nymphalinae



59. *Vanessa carye* ♂
Nymphalidae – Nymphalinae



59. *Vanessa carye* ♂
Nymphalidae – Nymphalinae



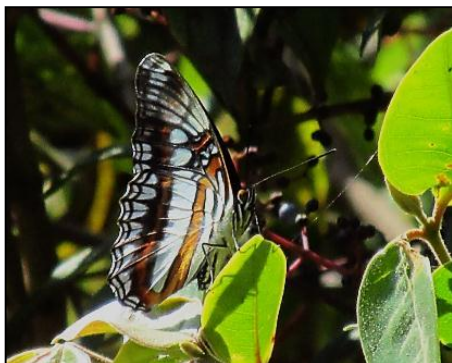
60. *Adelpha alala negra* ♂
Nymphalidae – Limenitidinae



61. *Adelpha corcyra aretina* ♂
Nymphalidae – Limenitidinae



62. *Adelpha seriphia godmani* ♂
Nymphalidae – Limenitidinae



62. *Adelpha seriphia godmani* ♂
Nymphalidae – Limenitidinae



63. *Abananote hylonome hylonome* ♂
Nymphalidae – Heliconiinae



64. *Altinote amida* ♂
Nymphalidae – Heliconiinae



64. *Altinote amida* ♂
Nymphalidae – Heliconiinae



65. *Dione glycera* ♂
Nymphalidae – Heliconiinae



65. *Dione glycera* ♂
Nymphalidae – Heliconiinae



66. *Dione juno* ♀
Nymphalidae – Heliconiinae



67. *Dione moneta* ♂
Nymphalidae – Heliconiinae



68. *Eueides procula edias* ♂
Nymphalidae – Heliconiinae



69. *Heliconius clysonymus* ♂
Nymphalidae – Heliconiinae



69. *Heliconius clysonymus* ♂
Nymphalidae – Heliconiinae



70. *Necyria bellona* ♂
Riodininae – Riodininae



71. *Siseme pallas pallas* ♂
Riodininae – Riodininae



72. *Cyanophrys pseudolongula* ♂
Lycaenidae – Theclinae



73. *Parrhasius selika* ♂
Lycaenidae – Theclinae



74. *Salazaria* sp. Cop.
Lycaenidae – Theclinae



75. *Micandra comae* ♂
Lycaenidae – Theclinae



75. *Micandra comae* ♂
Lycaenidae – Theclinae



76. *Rhamma arria* ♂
Lycaenidae – Theclinae



77. *Timaeta timaeus* ♂
Lycaenidae – Theclinae



77. *Timaeta timaeus* ♂
Lycaenidae – Theclinae



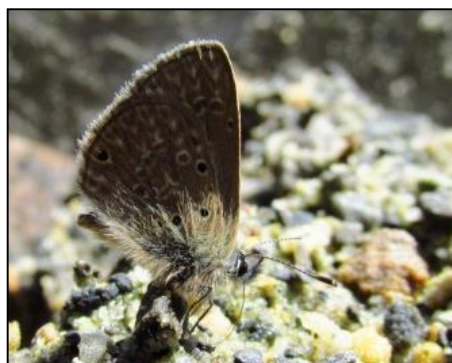
78. *Arzecla canacha* ♂
Lycaenidae – Theclinae



79. *Hemiargus hanno bogotana* ♂
Lycaenidae – Polyommatinae



79. *Hemiargus hanno bogotana* ♂
Lycaenidae – Polyommatinae



80. *Leptotes cassius cassius* ♂
Lycaenidae – Polyommatinae