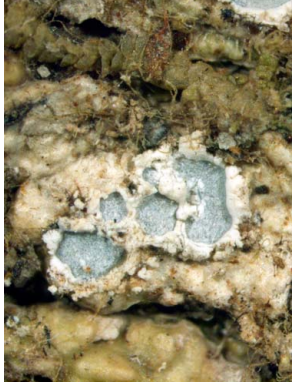


The genera *Astrochapsa*, *Chapsa*, *Compositrema*, *Nitidochapsa*, *Pseudochapsa* & *Pseudotopeliopsis*

Khwanruan Butsatorn-Papong, H. Thorsten Lumbsch & Robert Lücking

Photos by K. Butsatorn-Papong. Produced by K. Butsatorn-Papong, H.T. Lumbsch, R. Lücking. Support from the Thailand Research Fund, C. Keller, A.Mellon Foundation.
 © K. B. Papong [khwanruan.p@msu.ac.th] Department of Biology, Faculty of Science, Mahasarakham University, Maha Sarakham Province, 44150 Thailand; H. T. Lumbsch & R. Lücking: Integrative Research Center, Science & Education, The Field Museum, Chicago, IL 60605, USA. Assistance from R. Foster, J. Philipp, & T. Wachter.
 © Science & Education, The Field Museum, Chicago, USA. [http://fieldmuseum.org/IDtools] [rrc@fieldmuseum.org] **Rapid Color Guide # 545** version 1 10/2013



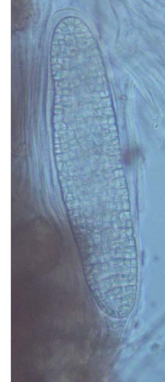
1 *Astrochapsa astroidea*



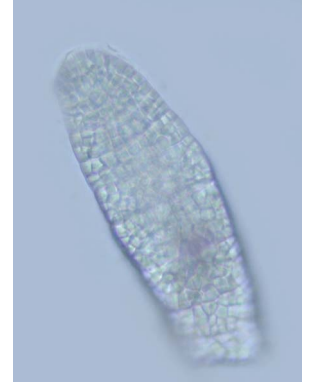
2 *Astrochapsa thailandica*



3 *Astrochapsa thailandica*



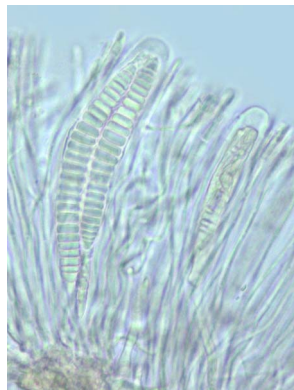
4 *Astrochapsa thailandica*
 Ascus with ascospore



5 *Astrochapsa thailandica*
 Muriform ascospore



6 *Chapsa indica*



7 *Chapsa indica*
 Asci with ascospores



8 *Chapsa leprocarpoides*



9 *Chapsa patens*



10 *Chapsa patens*



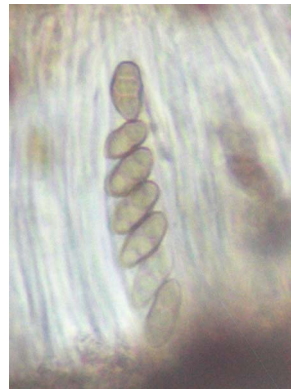
11 *Chapsa pulvereodiscus*



12 *Chapsa pulvereodiscus*



13 *Chapsa pulvereodiscus*



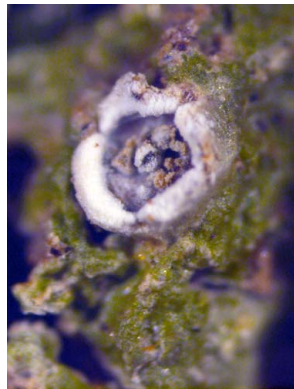
14 *Chapsa pulvereodiscus*
 Asci with ascospores



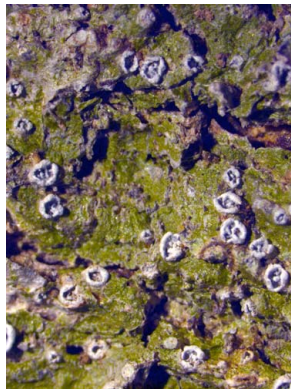
15 *Chapsa pulvereodiscus*
 Submuriform ascospores



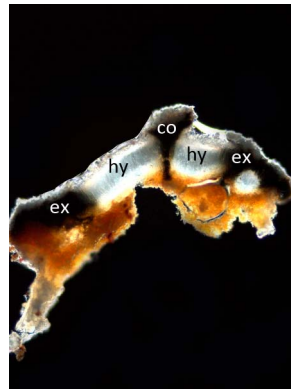
16 *Compositrema thailandicum*



17 *Compositrema thailandicum*



18 *Compositrema thailandicum*



19 *Compositrema thailandicum*
 Cross section through ascoma



20 *Compositrema thailandicum*
 Transversely septate ascospore

co = columella, ex = exciple, hy = hymenium

The genera *Astrochapsa*, *Chapsa*, *Compositrema*, *Nitidochapsa*, *Pseudochapsa* & *Pseudotopeliopsis*

Khwanruan Butsatorn-Papong, H. Thorsten Lumbsch & Robert Lücking

Photos by K. Butsatorn-Papong. Produced by K. Butsatorn-Papong, H.T. Lumbsch, R. Lücking. Support from the Thailand Research Fund, C. Keller, A.Mellon Foundation.

© K. B. Papong [khwanruan.p@msu.ac.th] Department of Biology, Faculty of Science, Mahasarakham University, Maha Sarakham Province, 44150 Thailand; H. T. Lumbsch & R. Lücking:

Integrative Research Center, Science & Education, The Field Museum, Chicago, IL 60605, USA. Assistance from R. Foster, J. Philipp, & T. Wachter.

© Science & Education, The Field Museum, Chicago, USA.

[<http://fieldmuseum.org/IDtools>] [irrc@fieldmuseum.org]

Rapid Color Guide # 545 version 1 102013



21 *Nitidochapsa leprieurii*



22 *Nitidochapsa leprieurii*



23 *Nitidochapsa leprieurii*



24 *Nitidochapsa leprieurii*



25 *Pseudochapsa pseudophlyctis*



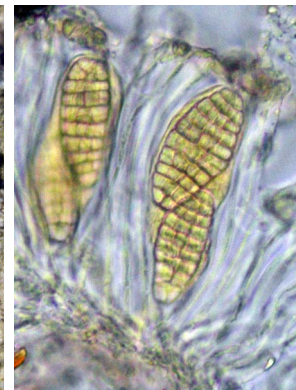
26 *Pseudochapsa pseudophlyctis*



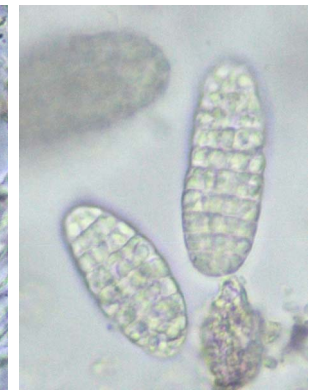
27 *Pseudochapsa pseudophlyctis*



28 *Pseudochapsa pseudophlyctis*



29 *Pseudochapsa pseudophlyctis*
Asci with ascospores, 1-



30 *Pseudochapsa pseudophlyctis*
Muriform ascospores



31 *Pseudotopeliopsis aggregata*



32 *Pseudotopeliopsis aggregata*



33 *Pseudotopeliopsis aggregata*
Asci with ascospores



34 *Pseudotopeliopsis aggregata*
Transversely septate ascospores



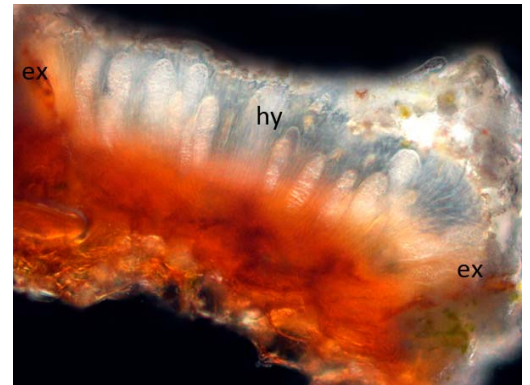
35 *Pseudotopeliopsis aggregata*
Transversely septate ascospore



36 Tropical rainforest



37 Habitat for Graphidaceae lichens



38 *Pseudochapsa pseudophlyctis*
Cross section through ascoma

co = columella, ex = exciple, hy = hymenium