

Mamalia wadogo wa Mbuga ya Taifa ya Mlima ya Mahale The Small Mammals of Mahale Mountains National Park

Imetayarishwa na (created by): Bill Stanley & Rebecca Banasiak
Utayarishaji na mfadhili (production and support): The Wildlife Conservation Society, The Field Museum of Natural History
[bstanley@fieldmuseum.org] [www.fieldmuseum.org/tanzania] Version 1 6/2009

© Field Museum of Natural History, Chicago

Photos by: Bill Stanley



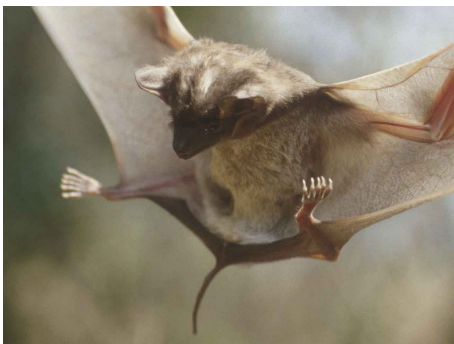
Rhynchocyon cirnei
Checked Sengi



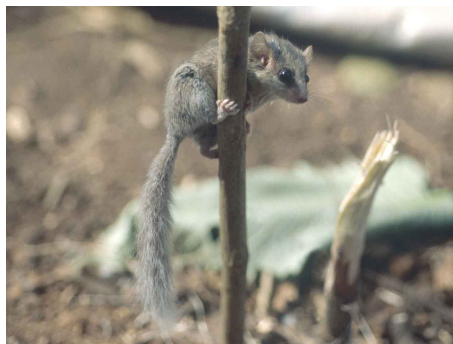
Crocidura olivieri
African Giant Shrew



Epomophorus wahlbergi
Wahlberg's Epauletted Fruit Bat



Taphozous perforatus
Egyptian Tomb Bat



Graphiurus sp.
African Dormouse



Cricetomys ansorgei
Southern Giant Pouched Rat



Dendromus mystacalis
Chestnut African Climbing Mouse



Lophuromys aquilus
Dark-colored Brush-furred Rat



Lemniscomys rosalia
Single-striped Lemniscomys



Lemniscomys striatus
Typical Lemniscomys



Oenomys hypoxanthus
Common Oenomys



Praomys jacksoni
Jackson's Praomys