

# Mamalia wadogo wa Mlima Kilimajaro

## Small Mammals of Mt. Kilimanjaro

Imetayarishwa na (created by): Bill Stanley & Rebecca Banasiak  
Utayarishaji na mfadhili (production and support): The Wildlife Conservation Society, The Field Museum of Natural History  
[bstanley@fieldmuseum.org] [www.fieldmuseum.org/tanzania] Version 1 6/2009

© Field Museum of Natural History, Chicago

Photos by: Bill Stanley



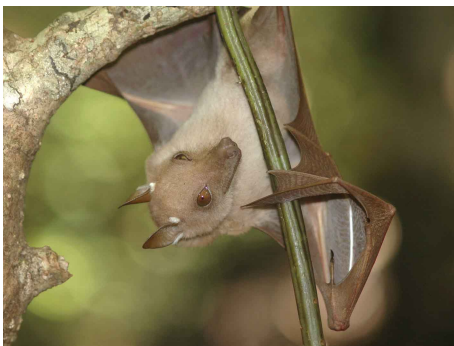
*Crocidura allex*  
East African Highland Shrew



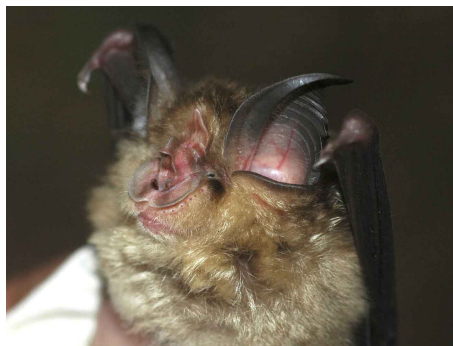
*Crocidura monax*  
Kilimanjaro Shrew



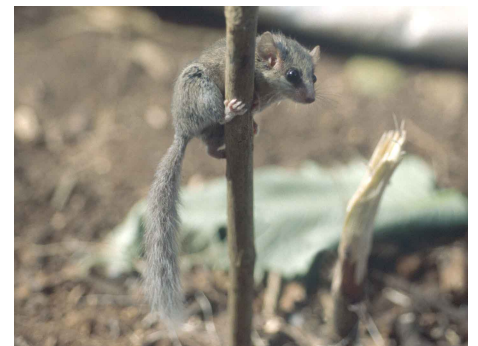
*Myosorex zinki*  
Kilimanjaro Mouse Shrew



*Epomophorus wahlbergi*  
Wahlberg's Epauletted Fruit Bat



*Rhinolophus clivus*  
Geoffroy's Horseshoe Bat



*Graphiurus murinus*  
Forest African Dormouse



*Tachyoryctes deamon*  
Demon African Mole Rat



*Lophuromys aquilus*  
Dark-colored Brush-furred Rat



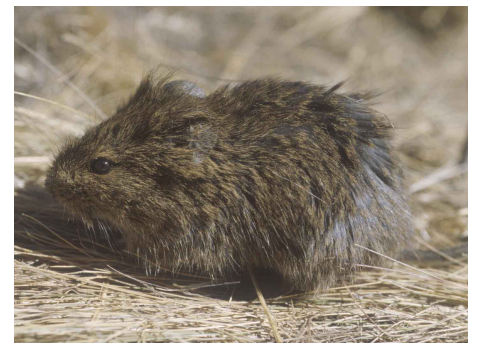
*Grammomys ibeanus*  
East African Grammomys



*Praomys delectorum*  
East African Praomys



*Rhabdomys dilectus*  
Mesic Four-striped Grass Rat



*Otomys tropicalis*  
East African Vlei Rat