

Juvenile trees from a riparian forest in Bofete-SP, southeastern Brazil.

1

Ricardo Augusto Gorne Viani

Photos by Ricardo Augusto Gorne Viani. Produced by Ricardo Augusto Gorne Viani.

© Ricardo Augusto Gorne Viani. [viani@unicamp.br]. Programa de Pós-graduação em Biologia Vegetal, Universidade Estadual de Campinas - UNICAMP, Campinas-SP, Brasil. Support from: Capes/Brasil and EUCATEX Florestal S.A. Date: 11/2007. Version 1.



1. *Astronium graveolens*
ANACARDIACEAE



2. *Tapirira guianensis*
ANACARDIACEAE



3. *Guatteria nigrescens*
ANNONACEAE



4. *Xylopia brasiliensis*
ANNONACEAE



5. *Aspidosperma* cf. *subincanum*
APOCYNACEAE



6. *Tabernaemontana catharinensis*
APOCYNACEAE



7. *Tabernaemontana catharinensis*
APOCYNACEAE



8. *Euterpe edulis*
ARECACEAE



9. *Euterpe edulis*
ARECACEAE



10. *Geonoma brevispatha*
ARECACEAE



11. *Geonoma brevispatha*
ARECACEAE



12. *Syagrus romanzoffiana*
ARECACEAE



13. *Gochnatia polymorpha*
ASTERACEAE



14. *Gochnatia polymorpha*
ASTERACEAE



15. *Zeyheria tuberculosa*
BIGNONIACEAE



16. *Cordia ecalyculata*
BORAGINACEAE



17. *Cordia sellowiana*
BORAGINACEAE



18. *Cordia sellowiana*
BORAGINACEAE



19. *Protium spruceanum*
BURSERACEAE



20. *Protium spruceanum*
BURSERACEAE

Juvenile trees from a riparian forest in Bofete-SP, southeastern Brazil.

Ricardo Augusto Gorne Viani

Photos by Ricardo Augusto Gorne Viani. Produced by Ricardo Augusto Gorne Viani.

© Ricardo Augusto Gorne Viani. [viani@unicamp.br]. Programa de Pós-graduação em Biologia Vegetal, Universidade Estadual de Campinas - UNICAMP, Campinas-SP, Brasil. Support from: Capes/Brasil and EUCATEX Florestal S.A. Date: 11/2007. Version 1.



21. *Maytenus aquifolia*
CELASTRACEAE



22. *Maytenus aquifolia*
CELASTRACEAE



23. *Maytenus salicifolia*
CELASTRACEAE



24. *Hedyosmum brasiliense*
CHLORANTHACEAE



25. *Calophyllum brasiliense*
CLUSIACEAE



26. *Calophyllum brasiliense*
CLUSIACEAE



27. *Terminalia triflora*
COMBRETACEAE



28. *Diospyros inconstans*
EBENACEAE



29. *Diospyros inconstans*
EBENACEAE



30. *Erythroxylum* cf. *cuneifolium*
ERYTHROXYLACEAE



31. *Erythroxylum* cf. *cuneifolium*
ERYTHROXYLACEAE



32. *Actinostemon klotzschii*
EUPHORBIACEAE



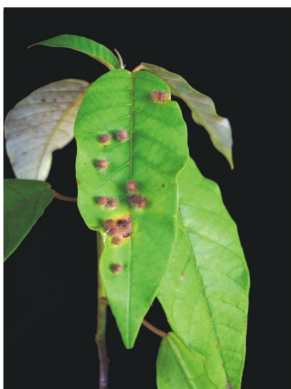
33. *Actinostemon klotzschii*
EUPHORBIACEAE



34. *Alchornea triplinervia*
EUPHORBIACEAE



35. *Croton floribundus*
EUPHORBIACEAE



36. *Croton floribundus*
EUPHORBIACEAE



37. *Maprounea guianensis*
EUPHORBIACEAE



38. *Pera glabrata*
EUPHORBIACEAE



39. *Pera glabrata*
EUPHORBIACEAE



40. *Sebastiania commersoniana*
EUPHORBIACEAE

Juvenile trees from a riparian forest in Bofete-SP, southeastern Brazil.

3

Ricardo Augusto Gorne Viani

Photos by Ricardo Augusto Gorne Viani. Produced by Ricardo Augusto Gorne Viani.

© Ricardo Augusto Gorne Viani. [viani@unicamp.br]. Programa de Pós-graduação em Biologia Vegetal, Universidade Estadual de Campinas - UNICAMP, Campinas-SP, Brasil. Support from: Capes/Brasil and EUCATEX Florestal S.A. Date: 11/2007. Version 1.



41. *Sebastiania commersoniana*
EUPHORBIACEAE



42. *Copaifera langsdorffii*
FABACEAE-CAESALPINIOIDEAE



43. *Calliandra tweediei*
FABACEAE-MIMOSOIDEAE



44. *Calliandra tweediei*
FABACEAE-MIMOSOIDEAE



45. *Bauhinia longifolia*
FABACEAE-CERCIDEAE



46. *Bauhinia longifolia*
FABACEAE-CERCIDEAE



47. *Inga cf. vera*
FABACEAE-MIMOSOIDEAE



48. *Piptadenia gonoacantha*
FABACEAE-MIMOSOIDEAE



49. *Piptadenia gonoacantha*
FABACEAE-MIMOSOIDEAE



50. *Andira fraxinifolia*
FABACEAE-PAPILIONOIDEAE



51. *Andira fraxinifolia*
FABACEAE-PAPILIONOIDEAE



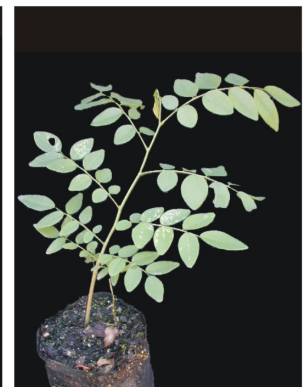
52. *Centrolobium tomentosum*
FABACEAE-PAPILIONOIDEAE



53. *Centrolobium tomentosum*
FABACEAE-PAPILIONOIDEAE



54. *Dalbergia frutescens*
FABACEAE-PAPILIONOIDEAE



55. *Dalbergia frutescens*
FABACEAE-PAPILIONOIDEAE



56. *Lonchocarpus cultratus*
FABACEAE-PAPILIONOIDEAE



57. *Lonchocarpus cultratus*
FABACEAE-PAPILIONOIDEAE



58. *Machaerium hirtum*
FABACEAE-PAPILIONOIDEAE



59. *Machaerium hirtum*
FABACEAE-PAPILIONOIDEAE



60. *Machaerium nyctitans*
FABACEAE-PAPILIONOIDEAE

Juvenile trees from a riparian forest in Bofete-SP, southeastern Brazil.

4

Ricardo Augusto Gorne Viani

Photos by Ricardo Augusto Gorne Viani. Produced by Ricardo Augusto Gorne Viani.

© Ricardo Augusto Gorne Viani. [viani@unicamp.br]. Programa de Pós-graduação em Biologia Vegetal, Universidade Estadual de Campinas - UNICAMP, Campinas-SP, Brasil. Support from: Capes/Brasil and EUCATEX Florestal S.A. Date: 11/2007. Version 1.



61. *Machaerium stipitatum*
FABACEAE-PAPILIONOIDEAE



62. *Machaerium stipitatum*
FABACEAE-PAPILIONOIDEAE



63. *Platypodium elegans*
FABACEAE-PAPILIONOIDEAE



64. *Lacistema hasslerianum*
LACITEMATACEAE



65. *Lacistema hasslerianum*
LACITEMATACEAE



66. *Aegiphila sellowiana*
LAMIACEAE



67. *Endlicheria paniculata*
LAURACEAE



68. *Persea pyrifolia*
LAURACEAE



69. *Cariniana estrellensis*
LECYTHIDACEAE



70. *Lafoensia pacari*
LYTHRACEAE



71. *Lafoensia pacari*
LYTHRACEAE



72. *Strychnos brasiliensis*
LOGANIACEAE



73. *Ceiba speciosa*
MALVACEAE



74. *Miconia ligustroides*
MELASTOMATACEAE



75. *Tibouchina cf. stenocarpa*
MELASTOMATACEAE



76. *Cedrela fissilis*
MELIACEAE



77. *Cedrela fissilis*
MELIACEAE



78. *Trichilia elegans*
MELIACEAE



79. *Trichilia catigua*
MELIACEAE



80. *Trichilia catigua*
MELIACEAE

Juvenile trees from a riparian forest in Bofete-SP, southeastern Brazil.

Ricardo Augusto Gorne Viani

Photos by Ricardo Augusto Gorne Viani. Produced by Ricardo Augusto Gorne Viani.

© Ricardo Augusto Gorne Viani. [viani@unicamp.br]. Programa de Pós-graduação em Biologia Vegetal, Universidade Estadual de Campinas - UNICAMP, Campinas-SP, Brasil. Support from: Capes/Brasil and EUCATEX Florestal S.A. Date: 11/2007. Version 1.



81. *Trichilia pallida*
MELIACEAE



82. *Trichilia pallida*
MELIACEAE



83. *Mollinedia* cf. *schottiana*
MONIMIACEAE



84. *Mollinedia* cf. *schottiana*
MONIMIACEAE



85. *Myrsine ferruginea*
MYRSINACEAE



86. *Myrsine ferruginea*
MYRSINACEAE



87. *Myrsine* cf. *umbellata*
MYRSINACEAE



88. *Myrsine* cf. *umbellata*
MYRSINACEAE



89. *Myrsine* cf. *umbellata*
MYRSINACEAE



90. *Calyptanthes clusiaefolia*
MYRTACEAE



91. *Campomanesia* cf. *guaviroba*
MYRTACEAE



92. *Campomanesia* cf. *guaviroba*
MYRTACEAE



93. *Eugenia florida*
MYRTACEAE



94. *Eugenia* cf. *hiemalis*
MYRTACEAE



95. *Eugenia ligustrina*
MYRTACEAE



96. *Eugenia ligustrina*
MYRTACEAE



97. *Eugenia pluriflora*
MYRTACEAE



98. *Eugenia pluriflora*
MYRTACEAE



99. *Gomidesia affinis*
MYRTACEAE



100. *Gomidesia affinis*
MYRTACEAE

Juvenile trees from a riparian forest in Bofete-SP, southeastern Brazil.

6

Ricardo Augusto Gorne Viani

Photos by Ricardo Augusto Gorne Viani. Produced by Ricardo Augusto Gorne Viani.

© Ricardo Augusto Gorne Viani. [viani@unicamp.br]. Programa de Pós-graduação em Biologia Vegetal, Universidade Estadual de Campinas - UNICAMP, Campinas-SP, Brasil. Support from: Capes/Brasil and EUCATEX Florestal S.A. Date: 11/2007. Version 1.



101. *Myrcia fallax*
MYRTACEAE



102. *Myrcia fallax*
MYRTACEAE



103. *Myrcia guianensis*
MYRTACEAE



104. *Myrcia guianensis*
MYRTACEAE



105. *Myrcia multiflora*
MYRTACEAE



106. *Myrciaria floribunda*
MYRTACEAE



107. *Myrciaria floribunda*
MYRTACEAE



108. *Siphoneugenia* aff. *widgreniana*
MYRTACEAE



109. *Siphoneugenia* aff. *widgreniana*
MYRTACEAE



110. *Guapira opposita*
NYCTAGINACEAE



111. *Guapira opposita*
NYCTAGINACEAE



112. *Piper gaudichaudianum*
PIPERACEAE



113. *Piper gaudichaudianum*
PIPERACEAE



114. *Coccoloba* cf. *cordata*
POLYGONACEAE



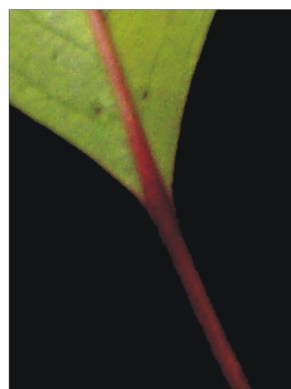
115. *Roupala brasiliensis*
PROTEACEAE



116. *Prunus myrtifolia*
ROSACEAE



117. *Prunus myrtifolia*
ROSACEAE



118. *Prunus myrtifolia*
ROSACEAE



119. *Amaioua intermedia*
RUBIACEAE



120. *Amaioua intermedia*
RUBIACEAE

Juvenile trees from a riparian forest in Bofete-SP, southeastern Brazil.

7

Ricardo Augusto Gorne Viani

Photos by Ricardo Augusto Gorne Viani. Produced by Ricardo Augusto Gorne Viani.

© Ricardo Augusto Gorne Viani. [viani@unicamp.br]. Programa de Pós-graduação em Biologia Vegetal, Universidade Estadual de Campinas - UNICAMP, Campinas-SP, Brasil. Support from: Capes/Brasil and EUCATEX Florestal S.A. Date: 11/2007. Version 1.



121. *Cordiera concolor*
RUBIACEAE



122. *Cordiera concolor*
RUBIACEAE



123. *Ixora venulosa*
RUBIACEAE



124. *Ixora venulosa*
RUBIACEAE



125. *Palicourea marcgravii*
RUBIACEAE



126. *Palicourea marcgravii*
RUBIACEAE



127. *Psychotria carthagenensis*
RUBIACEAE



128. *Psychotria carthagenensis*
RUBIACEAE



129. *Psychotria cf. hoffmannseggiana*
RUBIACEAE



130. *Psychotria cf. hoffmannseggiana*
RUBIACEAE



131. *Psychotria leiocarpa*
RUBIACEAE



132. *Psychotria vellosiana*
RUBIACEAE



133. *Psychotria vellosiana*
RUBIACEAE



134. *Balfourodendron riedelianum*
RUTACEAE



135. *Esenbeckia febrifuga*
RUTACEAE



136. *Esenbeckia febrifuga*
RUTACEAE



137. *Esenbeckia grandiflora*
RUTACEAE



138. *Esenbeckia grandiflora*
RUTACEAE



139. *Esenbeckia leiocarpa*
RUTACEAE



140. *Zanthoxylum fagara*
RUTACEAE

Juvenile trees from a riparian forest in Bofete-SP, southeastern Brazil.

Ricardo Augusto Gorne Viani

Photos by Ricardo Augusto Gorne Viani. Produced by Ricardo Augusto Gorne Viani.

© Ricardo Augusto Gorne Viani. [viani@unicamp.br]. Programa de Pós-graduação em Biologia Vegetal, Universidade Estadual de Campinas - UNICAMP, Campinas-SP, Brasil. Support from: Capes/Brasil and EUCATEX Florestal S.A. Date: 11/2007. Version 1.



141. *Zanthoxylum fagara*
RUTACEAE



142. *Xylosma tweediana*
SALICACEAE



143. *Casearia sylvestris*
SALICACEAE



144. *Casearia decandra*
SALICACEAE



145. *Casearia decandra*
SALICACEAE



146. *Allophylus edulis*
SAPINDACEAE



147. *Cupania tenuivalvis*
SAPINDACEAE



148. *Cupania tenuivalvis*
SAPINDACEAE



149. *Matayba elaeagnoides*
SAPINDACEAE



150. *Matayba elaeagnoides*
SAPINDACEAE



151. *Siparuna cujabana*
SIPARUNACEAE



152. *Siparuna cujabana*
SIPARUNACEAE



154. *Siparuna guianensis*
SIPARUNACEAE



154. *Siparuna guianensis*
SIPARUNACEAE



155. *Solanum schlechtendalii*
SOLANACEAE



156. *Solanum schlechtendalii*
SOLANACEAE



157. *Solanum sendtnerianum*
SOLANACEAE



158. *Symplocos tenuifolia*
SYMPLOCACEAE



159. *Vochysia tucanorum*
VOCHYSIACEAE



160. *Cecropia pachystachya*
URTICACEAE