

Diversidade de Frutos Carnosos da Floresta Atlântica, Pernambuco - **BRASIL**
FLESHY FRUITS of the **ATLANTIC FOREST** of Pernambuco **1**

Jussara Adriana Novaes Souza & Marcus Alves -- Universidade Federal de Pernambuco (UFPE)

Photos by Jussara Souza (except 2b by Bruno S. Amorim). Produced by: Juliana Philipp, R. Foster & T. Wachter, with support from: Ellen Hyndman Fund e Andrew Mellon Foundation. Support from: CAPES (Coordenação de Aperfeiçoamento de Pessoal de Nível Superior)

©Jussara Adriana Novaes Souza [jusnovs@gmail.com] and Marcus Alves. Centro de Ciências Biológicas, Programa de Pós-Graduação em Biologia Vegetal. Universidade Federal de Pernambuco. © Environmental & Conservation Programs, The Field Museum, Chicago, IL 60605 USA [rre@fieldmuseum.org] [www.fmnh.org/plantguides/] **Rapid Color Guide # 284** version 1 11/2010



1a *Henriettea succosa*
Melastomataceae - Acrosarcum



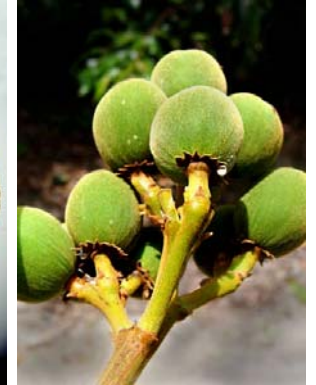
1b Fruit



1c Seeds



1d Fruit in cut transverse



2a *Thyrsoedium spruceanum*
Anacardiaceae - Bacca



2b Color embryo



2c Seed



2d Seeds and embryo



3a *Symphonia globulifera*
Clusiaceae - Bacca



3b Fruit and seed



3c Embryo



4a *Vismia guianensis*
Hypericaceae - Bacca



4b Fruits



4c Seeds



5a *Cinammomum chana*
Lauraceae - Drupe



5b Colors fruits



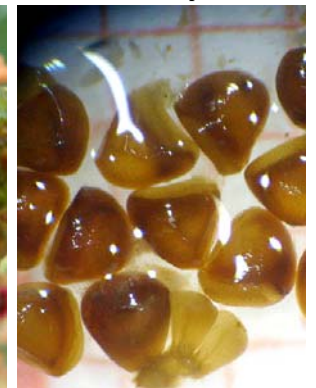
5c Seeds



6a *Miconia albicans*
Melastomataceae - Acrosarcum



6b Fruits



6c Seeds

2 Diversidade de Frutos Carnosos da Floresta Atlântica, Pernambuco - BRASIL **FLESHY FRUITS** of the **ATLANTIC FOREST** of Pernambuco

Jussara Adriana Novaes Souza & Marcus Alves -- Universidade Federal de Pernambuco (UFPE)

Photos by Jussara Souza (except 2b by Bruno S. Amorim). Produced by: Juliana Philipp, R. Foster & T. Wachter, with support from: Ellen Hyndman Fund e Andrew Mellon Foundation. Support from: CAPES (Coordenação de Aperfeiçoamento de Pessoal de Nível Superior)

©Jussara Adriana Novaes Souza [jusnovs@gmail.com] and Marcus Alves. Centro de Ciências Biológicas, Programa de Pós-Graduação em Biologia Vegetal. Universidade Federal de Pernambuco. © Environmental & Conservation Programs, The Field Museum, Chicago, IL 60605 USA [rrc@fieldmuseum.org] | www.fmnh.org/plantguides/ | **Rapid Color Guide # 284** version 1 11/2010



7a *Miconia amacurensis*
Melastomataceae - Acrosarcum



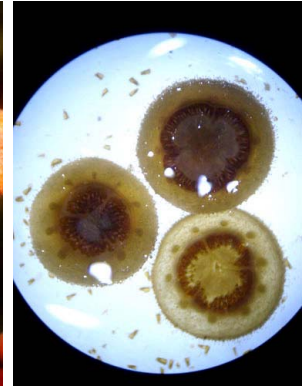
7b Immature fruits



7c Immature seeds



8a *Miconia nervosa*
Melastomataceae - Acrosarcum



8b Cut transverse



8c Seeds



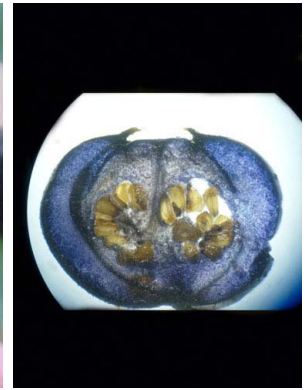
8d Fruits



9a *Miconia prasina*
MELASTOMACEAE - Acrosarcum



9b Mature fruit in transverse cut



9c Fruit



9d Seeds



10a *Miconia tomentosa*
Melastomataceae - Acrosarcum



10b Mature fruit



10c Mature fruit



10d Seeds



11a *Eugenia dichroma*
Myrtaceae - Bacca



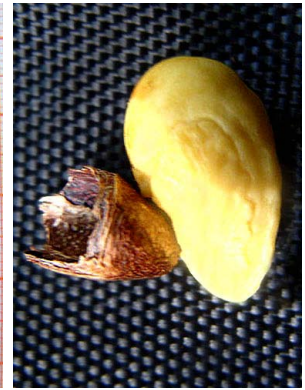
11b Immature fruit



11c Immature fruit



11d Seeds



11e Conferruminated embryo

Diversidade de Frutos Carnosos da Floresta Atlântica, Pernambuco - **BRASIL**
FLESHY FRUITS of the **ATLANTIC FOREST** of Pernambuco

Jussara Adriana Novaes Souza & Marccus Alves -- Universidade Federal de Pernambuco (UFPE)

Photos by Jussara Souza (except 2b by Bruno S. Amorim). Produced by: Juliana Philipp, R. Foster & T. Wachter, with support from: Ellen Hyndman Fund e Andrew Mellon Foundation.

Support from: CAPES (Coordenação de Aperfeiçoamento de Pessoal de Nível Superior)

©Jussara Adriana Novaes Souza [jussnovo@gmail.com] and Marccus Alves. Centro de Ciências Biológicas, Programa de Pós-Graduação em Biologia Vegetal. Universidade Federal de Pernambuco.

© Environmental & Conservation Programs, The Field Museum, Chicago, IL 60605 USA [rrc@fieldmuseum.org] [www.fnmh.org/plantguides/] **Rapid Color Guide # 284** version 1 11/2010



12a *Eugenia umbrosa*
Myrtaceae - Bacca



12b Seed and embryo



12c Embryo and testa



12d Conferruminated embryo



13a *Myrcia guianensis*
Myrtaceae - Bacca



13b Locules and embryo



13c Seeds and embryo



13d Embryo



14a *Pouteria grandiflora*
Sapotaceae - Bacca



14b Immature fruit



15a *Calypttranthes dardanoi*
Myrtaceae - Bacca



15b Locules and embryo



15c Locules and seeds



15d Seeds



15e Seed and embryo



16a *Guatteria pogonopus*
Annonaceae - Multiple baccetum



16b Immature fruit



16c Seeds



16d Seed - detail of hilum and rafe



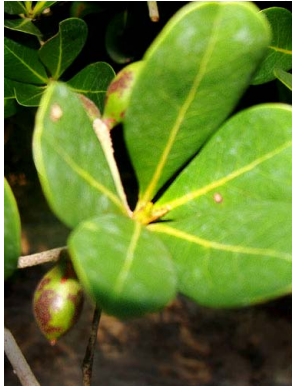
16e Seed and endosperm conferruminado

4 Diversidade de Frutos Carnosos da Floresta Atlântica, Pernambuco - BRASIL **FLESHY FRUITS** of the **ATLANTIC FOREST** of Pernambuco

Jussara Adriana Novaes Souza & Marccus Alves -- Universidade Federal de Pernambuco (UFPE)

Photos by Jussara Souza (except 2b by Bruno S. Amorim). Produced by: Juliana Philipp, R. Foster & T. Wachter, with support from: Ellen Hyndman Fund e Andrew Mellon Foundation. Support from: CAPES (Coordenação de Aperfeiçoamento de Pessoal de Nível Superior)

©Jussara Adriana Novaes Souza [jusnovs@gmail.com] and Marccus Alves. Centro de Ciências Biológicas, Programa de Pós-Graduação em Biologia Vegetal. Universidade Federal de Pernambuco. © Environmental & Conservation Programs, The Field Museum, Chicago, IL 60605 USA [rrc@fieldmuseum.org] | www.fmnh.org/plantguides/ | **Rapid Color Guide # 284** version 1 11/2010



17a *Buchenavia tetraphylla*
Combretaceae - Diclesium



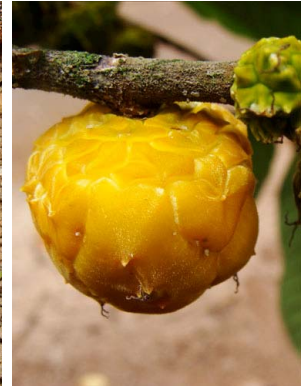
17b Immature embryo



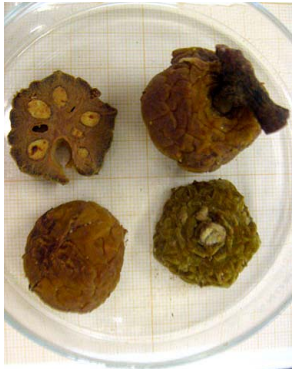
18a *Brosimum discolor*
Moraceae - Sicônio/
Compound monocarpic drupe



18b Seeds



19a *Helicostylis tomentosa*
Moraceae - Sorosus/
Compound polycarpic drupe



19b Fruit and locules



19c Seeds



19d Seeds and endocarp



19e Embryo



20a *Rauwolfia grandiflora*
Apocynaceae
Mericaipic syncarpic drupe



20b Mature fruit in yellow



20c Hard Endocarp



20d Seed



20e Embryo



21a *Trema micrantha*
Cannabaceae - Drupe



22a *Cheiloclinium cognatum*
Celastraceae - Drupe



22b Fruit



22c Seeds



22d Embryo



23a *Erythroxylum squamatum*
Erythroxylaceae - Drupe

Diversidade de Frutos Carnosos da Floresta Atlântica, Pernambuco - **BRASIL**
FLESHY FRUITS of the **ATLANTIC FOREST** of Pernambuco

Jussara Adriana Novaes Souza & Marccus Alves -- Universidade Federal de Pernambuco (UFPE)

Photos by Jussara Souza (except 2b by Bruno S. Amorim). Produced by: Juliana Philipp, R. Foster & T. Wachter, with support from: Ellen Hyndman Fund e Andrew Mellon Foundation.

Support from: CAPES (Coordenação de Aperfeiçoamento de Pessoal de Nível Superior)

©Jussara Adriana Novaes Souza [jusnovs@gmail.com] and Marccus Alves. Centro de Ciências Biológicas, Programa de Pós-Graduação em Biologia Vegetal. Universidade Federal de Pernambuco.

© Environmental & Conservation Programs, The Field Museum, Chicago, IL 60605 USA [rrc@fieldmuseum.org] [www.fnmh.org/plantguides/] **Rapid Color Guide # 284** version 1 11/2010



23b Fruit



23c Embryo



24a *Ximenia americana*
Olacaceae - Drupe



24b Mature fruit



24c Seed and embryo



25a *Psychotria carthagenensis*
Rubiaceae - Drupe



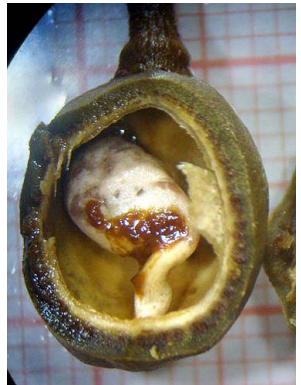
25b Mature fruit



25c Seeds



26a *Tapirira guianensis*
Anacardiaceae - Drupe



26b Seed



26c Embryo



27a *Ouratea castaneifolia*
Ochnaceae - Multiple drupets



27b Fruitlet green



27c Seed



27d Embryo



27e Testa and embryo



27f Embryo



28a *Simarouba amara*
Simaroubaceae - Multiple drupets



28b Seeds



28c Embryo

6 Diversidade de Frutos Carnosos da Floresta Atlântica, Pernambuco - BRASIL **FLESHY FRUITS** of the **ATLANTIC FOREST** of Pernambuco

Jussara Adriana Novaes Souza & Marcus Alves -- Universidade Federal de Pernambuco (UFPE)

Photos by Jussara Souza (except 2b by Bruno S. Amorim). Produced by: Juliana Phillip, R. Foster & T. Wachter, with support from: Ellen Hyndman Fund e Andrew Mellon Foundation. Support from: CAPES (Coordenação de Aperfeiçoamento de Pessoal de Nível Superior)

©Jussara Adriana Novaes Souza [jusnovs@gmail.com] and Marcus Alves. Centro de Ciências Biológicas, Programa de Pós-Graduação em Biologia Vegetal. Universidade Federal de Pernambuco. © Environmental & Conservation Programs, The Field Museum, Chicago, IL 60605 USA [rrc@fieldmuseum.org] | www.fmnh.org/plantguides/ | **Rapid Color Guide # 284** versão 1 11/2010



29a *Cordia nodosa*
Boraginaceae - Drupe



29b Mature fruit



29c Seed



30a *Cordia superba*
Boraginaceae - Drupe



30b Fruit and seed



30c Seeds



30d Embryo



31a *Byrsonima crisp*
Malpighiaceae - Drupe



31b Mature fruit



31c Seeds



31d Embryo



32a *Quina florida*
Quiinaeaceae - Bacca



32b Mature fruit



32c Detail of the infructescence



32d Seeds



32e Embryo



33a *Siparuna guianensis*
Siparunaceae-- Pomarium



33b Seeds in fruit



33c Fruit and seeds



34a *Allophylus edulis*
Sapindaceae- Schizocarpic drupets

FLESHY FRUITS IN THE ATLANTIC FOREST

Jussara Adriana Novaes Souza & Marcus Alves -- Universidade Federal de Pernambuco (UFPE)

Photos by Jussara Souza (except 2b by Bruno S. Amorim). Produced by: Juliana Philipp, R. Foster & T. Wachter, with support from: Ellen Hyndman Fund e Andrew Mellon Foundation.

Support from: CAPES (Coordenação de Aperfeiçoamento de Pessoal de Nível Superior)

©Jussara Adriana Novaes Souza [jusnovs@gmail.com] and Marcus Alves. Centro de Ciências Biológicas, Programa de Pós-Graduação em Biologia Vegetal. Universidade Federal de Pernambuco.

© Environmental & Conservation Programs, The Field Museum, Chicago, IL 60605 USA [rrc@fieldmuseum.org] [www.fmn.org/plantguides/] **Rapid Color Guide # 284** versão 1 11/2010



34b Detail of the carpel aborted green



34c Test and seed in the endocarp



34d Test and embryo



35a *Ficus arpausa*
Moraceae - Syconio



35b Eaten fruit



35c Fruit



35d Wasps in black



36a *Annona montana*
Annonaceae - Syncarpo



36b Flower and fruit



36c Immature seeds and embryo with endoperm ruminated



1a Fragment RPPN Mata de Piedade, Igarassu, Pernambuco.



1b Detail of the border and sugarcane plantation



1c Fragment interior



1d Weir located at USJ- Usina São José