

Liana Stems of the Usina São José

Juan Diego García-González & Marcus Alves – Universidade Federal de Pernambuco

Programa de Pós-Graduação em Biologia Vegetal, Laboratório de Morfo-Taxonomia Vegetal, Universidade Federal de Pernambuco (UFPE), Pernambuco, Brasil [www.ufpe.br/taxonomia]

Photos by J.D García-González. Produced by: Juliana Philipp, R. Foster & T. Wachter. Support from Ellen Hyndman Fund and Andrew Mellon Foundation.

© Juan Diego García-González [juantriego@hotmail.com] & Marcus Alves. Support from: Conselho Nacional de Desenvolvimento Científico e Tecnológico (CNPQ).

© Environmental & Conservation Programs, The Field Museum, Chicago, IL 60605 USA [rrc@fieldmuseum.org] [www.fnmh.org/plantguides/] **Rapid Color Guide # 283** version 1 01/2011



1 *Odontadenia lutea*
APOCYNACEAE



2 *Odontadenia lutea*
APOCYNACEAE



3 *Dolichandra unguis-cati*
BIGNONIACEAE



4 *Dolichandra unguis-cati*
BIGNONIACEAE



5 *Cheiloclinium serratum*
CELASTRACEAE



6 *Cheiloclinium serratum*
CELASTRACEAE



7 *Prionostemma asperum*
CELASTRACEAE



8 *Prionostemma asperum*
CELASTRACEAE



9 *Salacia multiflora*
CELASTRACEAE



10 *Salacia multiflora*
CELASTRACEAE



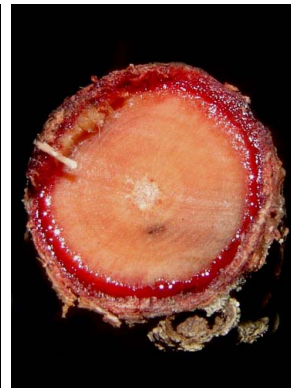
11 *Tontelea laxiflora*
CELASTRACEAE



12 *Tontelea laxiflora*
CELASTRACEAE



13 *Connarus blanchetti*
CONNARACEAE



14 *Connarus blanchetti*
CONNARACEAE



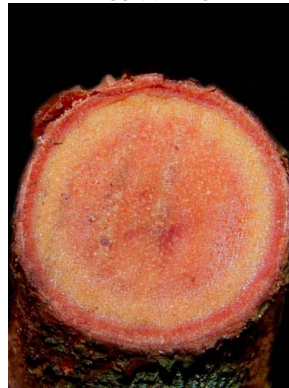
15 *Connarus* aff. *detersus*
CONNARACEAE



16 *Connarus* aff. *detersus*
CONNARACEAE



17 *Rourea doniana*
CONNARACEAE



18 *Rourea doniana*
CONNARACEAE



19 *Davilla kunthii*
DILLENIACEAE



20 *Davilla kunthii*
DILLENIACEAE

Common Lianas, Atlantic Rain Forest, Igarassu, Pernambuco, Brazil

Liana Stems of the Usina São José

Juan Diego García-González & Marcus Alves – Universidade Federal de Pernambuco

Programa de Pós-Graduação em Biologia Vegetal, Laboratório de Morfo-Taxonomia Vegetal, Universidade Federal de Pernambuco (UFPE), Pernambuco, Brasil [www.ufpe.br/taxonomia]

Photos by J.D García-González. Produced by: Juliana Philipp, R. Foster & T. Wachter. Support from Ellen Hyndman Fund and Andrew Mellon Foundation.

© Juan Diego García-González [juantriego@hotmail.com] & Marcus Alves. Support from: Conselho Nacional de Desenvolvimento Científico e Tecnológico (CNPQ).

© Environmental & Conservation Programs, The Field Museum, Chicago, IL 60605 USA [rrc@fieldmuseum.org] [www.fnmh.org/plantguides/] **Rapid Color Guide # 283** version 1 01/2011



21 *Davilla macrocarpa*
DILLENIACEAE



22 *Davilla macrocarpa*
DILLENIACEAE



23 *Doliocarpus dentatus*
DILLENIACEAE



24 *Doliocarpus dentatus*
DILLENIACEAE



25 *Tetracera breyniana*
DILLENIACEAE



26 *Tetracera breyniana*
DILLENIACEAE



27 *Dalechampia coriacea*
EUPHORBIACEAE



28 *Dalechampia coriacea*
EUPHORBIACEAE



29 *Omphalea brasiliensis*
EUPHORBIACEAE



30 *Omphalea brasiliensis*
EUPHORBIACEAE



31 *Dioclea violacea*
FABACEAE



32 *Dioclea violacea*
FABACEAE



33 *Machaerium aculeatum*
FABACEAE



34 *Machaerium aculeatum*
FABACEAE



35 *Machaerium condensatum*
FABACEAE



36 *Machaerium condensatum*
FABACEAE



37 *Machaerium salzmannii*
FABACEAE



38 *Machaerium salzmannii*
FABACEAE



39 *Machaerium triste*
FABACEAE



40 *Machaerium triste*
FABACEAE

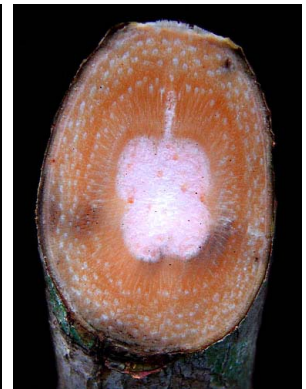
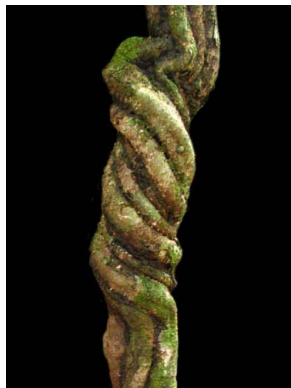
Liana Stems of the Usina São José

Juan Diego García-González & Marcus Alves – Universidade Federal de Pernambuco

Programa de Pós-Graduação em Biologia Vegetal, Laboratório de Morfo-Taxonomia Vegetal, Universidade Federal de Pernambuco (UFPE), Pernambuco, Brasil [www.ufpe.br/taxonomia]

Photos by J.D García-González. Produced by: Juliana Philipp, R. Foster & T. Wachter. Support from Ellen Hyndman Fund and Andrew Mellon Foundation.

© Juan Diego García-González [juantriego@hotmail.com] & Marcus Alves. Support from: Conselho Nacional de Desenvolvimento Científico e Tecnológico (CNPQ).

© Environmental & Conservation Programs, The Field Museum, Chicago, IL 60605 USA [rrc@fieldmuseum.org] [www.fmn.org/plantguides/] **Rapid Color Guide # 283** version 1 01/201141 *Phanera outimouta*
FABACEAE42 *Phanera outimouta*
FABACEAE43 *Senegalia pteridifolia*
FABACEAE44 *Senegalia pteridifolia*
FABACEAE45 *Senna quinquangulata*
FABACEAE46 *Senna quinquangulata*
FABACEAE47 *Sparattanthelium botocodorum*
HERNANDIACEAE48 *Sparattanthelium botocodorum*
HERNANDIACEAE49 *Strychnos cf. trinervis*
LOGANIACEAE50 *Strychnos cf. trinervis*
LOGANIACEAE51 *Banisteriopsis nummifera*
MALPIGHIACEAE52 *Banisteriopsis nummifera*
MALPIGHIACEAE53 *Heteropterys cf. cordifolia*
MALPIGHIACEAE54 *Heteropterys cf. cordifolia*
MALPIGHIACEAE55 *Heteropterys megaptera*
MALPIGHIACEAE56 *Heteropterys megaptera*
MALPIGHIACEAE57 *Heteropterys nordestina*
MALPIGHIACEAE58 *Heteropterys nordestina*
MALPIGHIACEAE59 *Niedenzuella acutifolia*
MALPIGHIACEAE60 *Niedenzuella acutifolia*
MALPIGHIACEAE

Common Lianas, Atlantic Rain Forest, Igarassu, Pernambuco, Brazil

Liana Stems of the Usina São José

Juan Diego García-González & Marcus Alves — Universidade Federal de Pernambuco

Programa de Pós-Graduação em Biologia Vegetal, Laboratório de Morfo-Taxonomia Vegetal, Universidade Federal de Pernambuco (UFPE), Pernambuco, Brasil [www.ufpe.br/taxonomia]
 Photos by J.D García-González. Produced by: Juliana Philipp, R. Foster & T. Wachter. Support from Ellen Hyndman Fund and Andrew Mellon Foundation.

© Juan Diego García-González [juantriego@hotmail.com] & Marcus Alves. Support from: Conselho Nacional de Desenvolvimento Científico e Tecnológico (CNPQ).

© Environmental & Conservation Programs, The Field Museum, Chicago, IL 60605 USA [rrc@fieldmuseum.org] [www.fnmh.org/plantguides/] **Rapid Color Guide # 283** version 1 01/2011



61 *Tetrapteryx mucronata*
MALPIGHIACEAE



62 *Tetrapteryx mucronata*
MALPIGHIACEAE



63 *Chondrodendron platiphyllum*
MENISPERMACEAE



64 *Chondrodendron platiphyllum*
MENISPERMACEAE



65 *Orthomene schomburgkii*
MENISPERMACEAE



66 *Orthomene schomburgkii*
MENISPERMACEAE



67 *Passiflora contracta*
PASSIFLORACEAE



68 *Passiflora contracta*
PASSIFLORACEAE



69 *Passiflora mansoi*
PASSIFLORACEAE



70 *Passiflora mansoi*
PASSIFLORACEAE



71 *Diclidanthera laurifolia*
POLYGALACEAE



72 *Diclidanthera laurifolia*
POLYGALACEAE



73 *Cocoloba declinata*
POLYGONACEAE



74 *Cocoloba declinata*
POLYGONACEAE



75 *Cocoloba lucidula*
POLYGONACEAE



76 *Cocoloba lucidula*
POLYGONACEAE



77 *Cocoloba parimensis*
POLYGONACEAE



78 *Cocoloba parimensis*
POLYGONACEAE



79 *Cocoloba striata*
POLYGONACEAE



80 *Cocoloba striata*
POLYGONACEAE

Liana Stems of the Usina São José

Juan Diego García-González & Marcus Alves – Universidade Federal de Pernambuco

Programa de Pós-Graduação em Biologia Vegetal, Laboratório de Morfo-Taxonomia Vegetal, Universidade Federal de Pernambuco (UFPE), Pernambuco, Brasil [www.ufpe.br/taxonomia]
 Photos by J.D García-González. Produced by: Juliana Philipp, R. Foster & T. Wachter. Support from Ellen Hyndman Fund and Andrew Mellon Foundation.

© Juan Diego García-González [juantriego@hotmail.com] & Marcus Alves. Support from: Conselho Nacional de Desenvolvimento Científico e Tecnológico (CNPQ).

© Environmental & Conservation Programs, The Field Museum, Chicago, IL 60605 USA [rrc@fieldmuseum.org] [www.fnmh.org/plantguides/] **Rapid Color Guide # 283** version 1 01/2011



81 *Clematis dioica*
RANUNCULACEAE



82 *Clematis dioica*
RANUNCULACEAE



83 *Gouania blanchetiana*
RHAMNACEAE



84 *Gouania blanchetiana*
RHAMNACEAE



85 *Malanea martiana*
RUBIACEAE



86 *Malanea martiana*
RUBIACEAE



87 *Paullinia racemosa*
SAPINDACEAE



88 *Paullinia racemosa*
SAPINDACEAE



89 *Paullinia trigonia*
SAPINDACEAE



90 *Paullinia trigonia*
SAPINDACEAE



91 *Serjania paucidentata*
SAPINDACEAE



92 *Serjania paucidentata*
SAPINDACEAE



93 *Serjania salzmanniana*
SAPINDACEAE



94 *Serjania salzmanniana*
SAPINDACEAE



95 *Solanum paraibanum*
SOLANACEAE



96 *Solanum paraibanum*
SOLANACEAE



97 *Trigonía nivea* var. *nivea*
TRIGONIACEAE



98 *Trigonía nivea* var. *nivea*
TRIGONIACEAE



99 *Cissus* aff. *pinnatifolia*
VITACEAE



100 *Cissus* aff. *pinnatifolia*
VITACEAE