

AMPHIBIANS of the **RIOZINHO** do **ANFRÍSIO Extractive Reserve, Pará** **1**

Flávio Bezerra Barros^{1,2}; Luís Vicente² and Henrique M. Pereira²

¹Universidade Federal do Pará, Brazil; ²Centro de Biologia Ambiental, Faculdade de Ciências da Universidade de Lisboa, Portugal

Photos by Flávio Bezerra Barros, except where indicated. Produced by Tyana Wachter, J. Philipp, & R. Foster, with support from Ellen Hyndman Fund & Andrew Mellon Foundation.

© Flávio Bezerra Barros [flaviobb@ufpa.br] Universidade Federal do Pará, Brazil; Faculdade de Ciências da Universidade de Lisboa, Portugal

© Environmental & Conservation Programs, The Field Museum, Chicago, IL 60605 USA. [rrc@fieldmuseum.org] [www.fmmh.org/animalguides/] **Rapid Color Guide # 271 version 1** 08/2010



1 *Allophryne ruthveni*
ALLOPHRYNIDAE



2 *Allobates femoralis*
AROMOBATIDAE



3 *Allobates* sp.
AROMOBATIDAE
(carrying tadpoles)



4 *Dendrophryniscus bokermanni*
BUFONIDAE



5 *Rhaebo guttatus*
BUFONIDAE



6 *Rhinella castaneotica*
BUFONIDAE



7 *Rhinella magnussoni*
BUFONIDAE



8 *Rhinella* gr. *margaritifera*
BUFONIDAE



9 *Rhinella* gr. *margaritifera*
BUFONIDAE
(pair in amplexus)



10 *Rhinella marina*
BUFONIDAE



11 *Rhinella marina*
BUFONIDAE
(pair in amplexus)



12 *Ceratophrys cornuta*
CERATOPHRYIDAE



13 *Proceratophrys concavitypanum*
CYCLORAMPHIDAE



14 *Adelphobates castaneotica*
DENDROBATIDAE

photo: Pedro L.V. Peloso



15 *Dendropsophus brevifrons*
HYLIDAE



16 *Dendropsophus leucophyllatus*
HYLIDAE



17 *Dendropsophus leucophyllatus*
HYLIDAE
(yellow pattern)



18 *Dendropsophus leucophyllatus*
HYLIDAE
(giraffe pattern)



19 *Dendropsophus melanargyreus*
HYLIDAE



20 *Dendropsophus minusculus*
HYLIDAE

AMPHIBIANS of the **RIOZINHO** do **ANFRÍSIO** Extractive Reserve, Pará **2**

Flávio Bezerra Barros^{1,2}; Luís Vicente² and Henrique M. Pereira²

¹Universidade Federal do Pará, Brazil; ²Centro de Biologia Ambiental, Faculdade de Ciências da Universidade de Lisboa, Portugal

Photos by Flávio Bezerra Barros, except where indicated. Produced by Tyana Wachter, J. Philipp, & R. Foster, with support from Ellen Hyndman Fund & Andrew Mellon Foundation.

© Flávio Bezerra Barros [flaviobb@ufpa.br] Universidade Federal do Pará, Brazil; Faculdade de Ciências da Universidade de Lisboa, Portugal

© Environmental & Conservation Programs, The Field Museum, Chicago, IL 60605 USA. [rrc@fieldmuseum.org] [www.fmnh.org/animalguides/] **Rapid Color Guide # 271** version 1 08/2010



21 *Dendropsophus minutus*
HYLIDAE



22 *Dendropsophus* gr. *microcephalus*
HYLIDAE
(female)



23 *Dendropsophus* gr. *microcephalus*
HYLIDAE
(pair in amplexus)



24 *Dendropsophus* sp.
HYLIDAE



25 *Hypsiboas boans*
HYLIDAE



26 *Hypsiboas calcaratus*
HYLIDAE



27 *Hypsiboas cinerascens*
HYLIDAE



28 *Hypsiboas geographicus*
HYLIDAE



29 *Hypsiboas geographicus*
HYLIDAE
(juvenile)



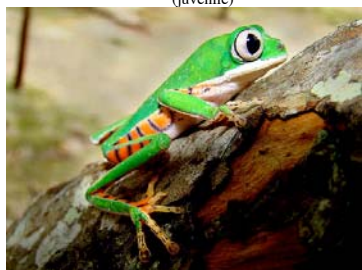
30 *Hypsiboas geographicus*
HYLIDAE
(pair in amplexus)



31 *Hypsiboas multifasciatus*
HYLIDAE



32 *Osteocephalus leprieurii*
HYLIDAE



33 *Phyllomedusa hypochondrialis*
HYLIDAE



34 *Phyllomedusa vaillantii*
HYLIDAE



35 *Scinax boesemani*
HYLIDAE



36 *Scinax boesemani*
HYLIDAE
(pair in amplexus)



37 *Scinax* cf. *cruentommus*
HYLIDAE



38 *Scinax garbei*
HYLIDAE



39 *Scinax garbei*
HYLIDAE
(pair in amplexus)



40 *Scinax nebulosus*
HYLIDAE

AMPHIBIANS of the **RIOZINHO** do **ANFRÍSIO** Extractive Reserve, Pará **3**

Flávio Bezerra Barros^{1,2}; Luís Vicente² and Henrique M. Pereira²

¹Universidade Federal do Pará, Brazil; ²Centro de Biologia Ambiental, Faculdade de Ciências da Universidade de Lisboa, Portugal

Photos by Flávio Bezerra Barros, except where indicated. Produced by Tyana Wachter, J. Philipp, & R. Foster, with support from Ellen Hyndman Fund & Andrew Mellon Foundation.

© Flávio Bezerra Barros [flaviobb@ufpa.br] Universidade Federal do Pará, Brazil; Faculdade de Ciências da Universidade de Lisboa, Portugal

© Environmental & Conservation Programs, The Field Museum, Chicago, IL 60605 USA. [rrc@fieldmuseum.org] [www.fmnh.org/animalguides/] **Rapid Color Guide # 271** version 1 08/2010



41 *Scinax ruber*
HYLIDAE



42 *Scinax x-signatus*
HYLIDAE



43 *Trachycephalus resinifictrix*
HYLIDAE



44 *Trachycephalus venulosus*
HYLIDAE



45 *Trachycephalus venulosus*
HYLIDAE
(pair in amplexus)



46 *Physalaemus ehippifer*
LEIUPERIDAE



47 *Leptodactylus andreae*
LEPTODACTYLIDAE



48 *Leptodactylus knudseni*
LEPTODACTYLIDAE



49 *Leptodactylus lineatus*
LEPTODACTYLIDAE



50 *Leptodactylus mystaceus*
LEPTODACTYLIDAE



51 *Leptodactylus petersii*
LEPTODACTYLIDAE



52 *Leptodactylus podicipinus*
LEPTODACTYLIDAE



53 *Leptodactylus rhodomystax*
LEPTODACTYLIDAE



54 *Chiasmocleis avilapireasae*
MICROHYLIDAE



55 *Chiasmocleis jimi*
MICROHYLIDAE



56 *Ctenophryne geayi*
MICROHYLIDAE



57 *Ctenophryne geayi*
MICROHYLIDAE
(ventral & dorsal views)



58 *Hamptophryne boliviana*
MICROHYLIDAE



59 *Pipa pipa*
PIPIDAE
photo: T. C. S. Ávila-Pires



60 *Pristimantis fenestratus*
STRABOMANTIDAE

AMPHIBIANS of the **RIOZINHO** do **ANFRÍSIO** Extractive Reserve, Pará **4**

Flávio Bezerra Barros^{1,2}; Luís Vicente² and Henrique M. Pereira²

¹Universidade Federal do Pará, Brazil; ²Centro de Biologia Ambiental, Faculdade de Ciências da Universidade de Lisboa, Portugal

Photos by Flávio Bezerra Barros, except where indicated. Produced by Tyana Wachter, J. Philipp, & R. Foster, with support from Ellen Hyndman Fund & Andrew Mellon Foundation.

© Flávio Bezerra Barros [flaviobb@ufpa.br] Universidade Federal do Pará, Brazil; Faculdade de Ciências da Universidade de Lisboa, Portugal

© Environmental & Conservation Programs, The Field Museum, Chicago, IL 60605 USA. [rrc@fieldmuseum.org] [www.fmnh.org/animalguides/] **Rapid Color Guide # 271** version 1 08/2010



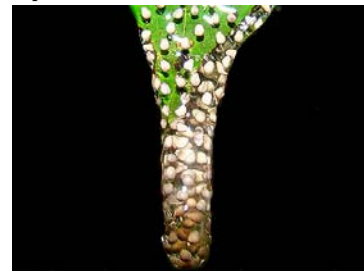
61 Egg clutch
Dendropsophus gr. *microcephalus*
HYLIDAE



62 Egg clutch
Dendropsophus sp.
HYLIDAE



63 Egg clutch with tadpoles
Dendropsophus sp.
HYLIDAE



64 Egg clutch
HYLIDAE



65 Egg clutch with tadpoles
HYLIDAE



66 Egg clutch with tadpoles
HYLIDAE



67 Pair spawning
Hypsiboas geographicus
HYLIDAE



68 Aggregation of tadpoles
Hypsiboas geographicus
HYLIDAE



69 Foam nest
Physalaemus ephippifer
LEIUPERIDAE



70 Opening to egg clutch
Leptodactylus petersii
LEPTODACTYLIDAE



71 Guarding egg clutch
Leptodactylus petersii
LEPTODACTYLIDAE



72 Foam nest
LEPTODACTYLIDAE



73 Egg clutch in strings
Rhinella marina
BUFONIDAE



74 Egg clutch with tadpoles
Rhinella cf. gr. *margaritifera*
BUFONIDAE



75 Tadpoles
(not identified)



76 Partial view of Reserva
Extrativista da Riozinho do Anfrísio



77 Partial view of forest with pond in
center



78 Pond (Morro do Anfrísio)
reproduction site of amphibians



79 Pond (Morro Verde)
reproduction site of amphibians



80 Pond (Igarapé do Limão)
reproduction site of amphibians