

ANTBIRDS of Peru and Bolivia (including antthrushes, antpittas and gnateaters)

Joseph A. Tobias (Edward Grey Institute, Oxford University)

Photos by Roger Ahlman (RA), Mike Andersen (MA), Nick Athanas (NA), Steve Blain (SB), Dušan Brinkhuizen (DB), Rosalbina Butron (RB), Iain Campbell (IC), Bertrando Campos (BC), J. Chavez (JC), Arthur Grosset (AG), Wim Heylen (WH), Jon Hornbuckle (JH), Peter Hosner (PH), Caroline Isaksson (CI), Jill Jankowski (JJ), Philip Koch (PK), Daniel F. Lane (DFL), Daniel Lebbin (DL), Huw Lloyd (HL), Chris Merkord (CM), Paul Noakes (PN), Scott Olmstead (SO), Chris Perrins (CP), Zacharia Peterson (ZP), Fernando Angulo Pradolongo (FAP), Robert Scanlon (RS), Ryan Shaw (RSh), Joseph A. Tobias (JAT), Wendy Tori (WT), Ursula Valdez (UV), Thomas Valqui (TV), Rob Williams (RW), Kevin Zimmer (KZ).
© Environmental & Conservation Programs, The Field Museum, Chicago, IL 60605 USA. [RRC@fmnh.org] | www.fmnh.org/animalguides/ | Rapid Color Guide #256 version 1, 11/2009



1 *Cymbilaimus lineatus*
Ad ♂ KZ



1 *Cymbilaimus lineatus*
Ad ♀ JAT



1 *Cymbilaimus lineatus*
Ad ♀ JAT



2 *Cymbilaimus sanctaemariae*
Ad ♂ JAT



2 *Cymbilaimus sanctaemariae*
Ad ♀ JAT



3 *Batara cinerea argentina*
Ad ♂ JAT



3 *Batara cinerea argentina*
Ad ♂ JAT



4 *Frederickena unduligera*
Ad ♂ WT



5 *Taraba major*
Ad ♂ JAT



5 *Taraba major*
Imm ♂ JAT



5 *Taraba major*
Ad ♀ JH



6 *Sakesphorus canadensis*
Ad ♂ JAT



7 *Thamnophilus doliatus radiatus*
Ad ♂ JAT



7 *Thamnophilus doliatus radiatus*
Ad ♀ JAT



8 *Thamnophilus ruficapillus cochabambae*
Ad ♂ JAT



8 *Thamnophilus ruficapillus ruficapillus*
Ad ♀ NA

ANTBIRDS of Peru and Bolivia (including antthrushes, antpittas and gnateaters)

Joseph A. Tobias (Edward Grey Institute, Oxford University)

Photos by Roger Ahlman (RA), Mike Andersen (MA), Nick Athanas (NA), Steve Blain (SB), Dušan Brinkhuizen (DB), Rosalbina Butron (RB), Iain Campbell (IC), Bertrando Campos (BC), J. Chavez (JC), Arthur Grosset (AG), Wim Heylen (WH), Jon Hornbuckle (JH), Peter Hosner (PH), Caroline Isaksson (CI), Jill Jankowski (JJ), Philip Koch (PK), Daniel F. Lane (DFL), Daniel Lebbin (DL), Huw Lloyd (HL), Chris Merkord (CM), Paul Noakes (PN), Scott Olmstead (SO), Chris Perrins (CP), Zacharia Peterson (ZP), Fernando Angulo Pratulongo (FAP), Robert Scanlon (RS), Ryan Shaw (RSh), Joseph A. Tobias (JAT), Wendy Tori (WT), Ursula Valdez (UV), Thomas Valqui (TV), Rob Williams (RW), Kevin Zimmer (KZ).
© Environmental & Conservation Programs, The Field Museum, Chicago, IL 60605 USA. [RRC@fmnh.org] [www.fmnh.org/animalguides/] Rapid Color Guide #256 version 1, 11/2009



8 *Thamnophilus ruficapillus marcapatae*
Ad ♂ DFL



8 *Thamnophilus ruficapillus marcapatae*
Ad ♀ JAT



9 *Thamnophilus torquatus*
Ad ♂ AG



9 *Thamnophilus torquatus*
Ad ♀ NA



10 *Thamnophilus zarumae*
Ad ♂ PN



11 *Thamnophilus tenuepunctatus*
Ad ♀ RW



12 *Thamnophilus palliatus*
Ad ♂ JAT



13 *Thamnophilus bernardi*
Ad ♂ NA



13 *Thamnophilus bernardi*
Ad ♀ RW



14 *Thamnophilus atrinucha*
Ad ♂ DL



14 *Thamnophilus atrinucha*
Ad ♀ JAT



15 *Thamnophilus schistaceus*
Ad ♂ DL



15 *Thamnophilus schistaceus*
Ad ♀ JAT



16 *Thamnophilus murinus canipennis*
Ad ♂ JAT



16 *Thamnophilus murinus murinus*
Ad ♀ JAT



17 *Thamnophilus cryptoleucus*
Ad ♂ KZ

ANTBIRDS of Peru and Bolivia (including antthrushes, antpittas and gnateaters)

Joseph A. Tobias (Edward Grey Institute, Oxford University)

Photos by Roger Ahlman (RA), Mike Andersen (MA), Nick Athanas (NA), Steve Blain (SB), Dušan Brinkhuizen (DB), Rosalbina Butron (RB), Iain Campbell (IC), Bertrando Campos (BC), J. Chavez (JC), Arthur Grosset (AG), Wim Heylen (WH), Jon Hornbuckle (JH), Peter Hosner (PH), Caroline Isaksson (CI), Jill Jankowski (JJ), Philip Koch (PK), Daniel F. Lane (DFL), Daniel Lebbin (DL), Huw Lloyd (HL), Chris Merkord (CM), Paul Noakes (PN), Scott Olmstead (SO), Chris Perrins (CP), Zacharia Peterson (ZP), Fernando Angulo Pralongo (FAP), Robert Scanlon (RS), Ryan Shaw (RSh), Joseph A. Tobias (JAT), Wendy Tori (WT), Ursula Valdez (UV), Thomas Valqui (TV), Rob Williams (RW), Kevin Zimmer (KZ).

© Environmental & Conservation Programs, The Field Museum, Chicago, IL 60605 USA. [RRC@fmnh.org] | www.fmnh.org/animalguides/ | Rapid Color Guide #256 version 1, 11/2009



18 *Thamnophilus punctatus leucogaster*
Ad ♀ DFL



19 *Thamnophilus stictocephalus*
Ad ♂ JAT



20 *Thamnophilus sticturus*
Ad ♂ JAT



20 *Thamnophilus sticturus*
Ad ♀ JAT



21 *Thamnophilus caeruleus aspersiventer*
Ad ♂ JAT



21 *Thamnophilus caeruleus aspersiventer*
Ad ♀ JAT



22 *Thamnophilus unicolor*
Ad ♂ SO



22 *Thamnophilus unicolor*
Ad ♂ (Cusco) JAT



22 *Thamnophilus unicolor*
Ad ♀ JAT



23 *Thamnophilus aethiops kapounis*
Ad ♂ JAT



23 *Thamnophilus aethiops kapounis*
Ad ♀ JAT



24 *Thamnophilus aroyae*
Ad ♂ JAT



24 *Thamnophilus aroyae*
Imm ♂ JAT



25 *Thamnophilus amazonicus*
Ad ♂ JAT



26 *Megastictus margaritatus*
Ad ♂ JAT



27 *Neotantes niger*
Ad ♂ DL

ANTBIRDS of Peru and Bolivia (including antthrushes, antpittas and gnateaters)

Joseph A. Tobias (Edward Grey Institute, Oxford University)

Photos by Roger Ahlman (RA), Mike Andersen (MA), Nick Athanas (NA), Steve Blain (SB), Dušan Brinkhuizen (DB) Rosalbina Butron (RB), Iain Campbell (IC), Bertrando Campos (BC), J. Chavez (JC), Arthur Grosset (AG), Wim Heylen (WH), Jon Hornbuckle (JH), Peter Hosner (PH), Caroline Isaksson (CI), Jill Jankowski (JJ), Philip Koch (PK), Daniel F. Lane (DFL), Daniel Lebbin (DL), Huw Lloyd (HL), Chris Merkord (CM), Paul Noakes (PN), Scott Olmstead (SO), Chris Perrins (CP), Zacharia Peterson (ZP), Fernando Angulo Pratulongo (FAP), Robert Scanlon (RS), Ryan Shaw (RSh), Joseph A. Tobias (JAT), Wendy Tori (WT), Ursula Valdez (UV), Thomas Valqui (TV), Rob Williams (RW), Kevin Zimmer (KZ).
© Environmental & Conservation Programs, The Field Museum, Chicago, IL 60605 USA. [RRC@fmnh.org] | www.fmnh.org/animalguides/ | Rapid Color Guide #256 version 1, 11/2009



27 *Neotantes niger*
Ad ♀ DFL



28 *Dysithamnus mentalis tavarae*
Ad ♂ JAT



28 *Dysithamnus mentalis mentalis*
Ad ♀ JAT



29 *Dysithamnus occidentalis*
Ad ♂ DFL



29 *Dysithamnus occidentalis*
Ad ♀ DFL



30 *Thamnomanes ardesiacus ardesiacus*
Ad ♀ DFL



30 *Thamnomanes ardesiacus ardesiacus*
Ad ♀ JAT



31 *Thamnomanes saturninus*
Ad ♀ JAT



32 *Thamnomanes caesius persimilis*
Ad ♂ JAT



32 *Thamnomanes caesius perimilis*
Imm ♀ JAT



33 *Thamnomanes schistogynus*
Ad ♂ JAT



33 *Thamnomanes schistogynus*
Ad ♀ JAT



34 *Pygiptila stellaris stellaris*
Ad ♂ JAT



34 *Pygiptila stellaris stellaris*
Ad ♀ JAT



35 *Epinecrophylla leucophthalma leucophthalma*
Ad ♂ "(brown eyes)" JAT



35 *Epinecrophylla leucophthalma leucophthalma*
Imm ♂ JAT

ANTBIRDS of Peru and Bolivia (including antthrushes, antpittas and gnateaters)

Joseph A. Tobias (Edward Grey Institute, Oxford University)

Photos by Roger Ahlman (RA), Mike Andersen (MA), Nick Athanas (NA), Steve Blain (SB), Dušan Brinkhuizen (DB), Rosalbina Butron (RB), Iain Campbell (IC), Bertrando Campos (BC), J. Chavez (JC), Arthur Grosset (AG), Wim Heylen (WH), Jon Hornbuckle (JH), Peter Hosner (PH), Caroline Isaksson (CI), Jill Jankowski (JJ), Philip Koch (PK), Daniel F. Lane (DFL), Daniel Lebbin (DL), Huw Lloyd (HL), Chris Merkord (CM), Paul Noakes (PN), Scott Olmstead (SO), Chris Perrins (CP), Zacharia Peterson (ZP), Fernando Angulo Pralongo (FAP), Robert Scanlon (RS), Ryan Shaw (RSh), Joseph A. Tobias (JAT), Wendy Tori (WT), Ursula Valdez (UV), Thomas Valqui (TV), Rob Williams (RW), Kevin Zimmer (KZ).
© Environmental & Conservation Programs, The Field Museum, Chicago, IL 60605 USA. [RRC@fmnh.org] | www.fmnh.org/animalguides/ | Rapid Color Guide #256 version 1, 11/2009



35 *Epinecrophylla leucophthalma leucophthalma* Ad ♀ "(brown eyes)" JAT 35 *Epinecrophylla leucophthalma leucophthalma* Imm ♀ JAT 36 *Epinecrophylla haematonota haematonota* Ad ♂ JAT 36 *Epinecrophylla haematonota haematonota* Ad ♀ JAT



37 *Epinecrophylla spodionota sororia* Ad ♂ JJ 37 *Epinecrophylla spodionota sororia* Ad ♀ ZP 38 *Epinecrophylla ornata meridionalis* Ad ♂ (grey back) JAT 38 *Epinecrophylla ornata meridionalis* Ad ♂ (rufous back) CM



38 *Epinecrophylla ornata meridionalis* Ad ♀ JAT 39 *Epinecrophylla erythrura septentrionalis* Ad ♂ CM 39 *Epinecrophylla erythrura septentrionalis* Ad ♀ CM 40 *Myrmotherula brachyura* Ad ♂ AG



41 *Myrmotherula sclateri* Ad ♂ JAT 42 *Myrmotherula multostriata* Ad ♂ TV 43 *Myrmotherula cherriei* Ad ♂ JAT 44 *Myrmotherula longicauda* Ad ♂ JAT

ANTBIRDS of Peru and Bolivia (including antthrushes, antpittas and gnateaters)

Joseph A. Tobias (Edward Grey Institute, Oxford University)

Photos by Roger Ahlman (RA), Mike Andersen (MA), Nick Athanas (NA), Steve Blain (SB), Dušan Brinkhuizen (DB), Rosalbina Butron (RB), Iain Campbell (IC), Bertrando Campos (BC), J. Chavez (JC), Arthur Grosset (AG), Wim Heylen (WH), Jon Hornbuckle (JH), Peter Hosner (PH), Caroline Isaksson (CI), Jill Jankowski (JJ), Philip Koch (PK), Daniel F. Lane (DFL), Daniel Lebbin (DL), Huw Lloyd (HL), Chris Merkord (CM), Paul Noakes (PN), Scott Olmstead (SO), Chris Perrins (CP), Zacharia Peterson (ZP), Fernando Angulo Pratulongo (FAP), Robert Scanlon (RS), Ryan Shaw (RSh), Joseph A. Tobias (JAT), Wendy Tori (WT), Ursula Valdez (UV), Thomas Valqui (TV), Rob Williams (RW), Kevin Zimmer (KZ).
© Environmental & Conservation Programs, The Field Museum, Chicago, IL 60605 USA. [RRC@fmnh.org] [www.fmnh.org/animalguides/] Rapid Color Guide #256 version 1, 11/2009



45 *Myrmotherula axillaris heterozyga*
Ad ♂ JAT

45 *Myrmotherula axillaris heterozyga*
Ad ♀ JAT

45 *Myrmotherula axillaris axillaris*
Ad ♂ JH

46 *Myrmotherula hauxwelli hauxwelli*
Ad ♂ JAT



46 *Myrmotherula hauxwelli hauxwelli*
Ad ♀ JAT

47 *Myrmotherula schisticolor interior*
Ad ♂ CM

47 *Myrmotherula schisticolor interior*
Imm ♂ CM

47 *Myrmotherula schisticolor interior*
Ad ♀ CM



48 *Myrmotherula longipennis garbei*
Ad ♂ JAT

48 *Myrmotherula longipennis garbei*
Ad ♂ JAT

48 *Myrmotherula longipennis garbei*
Ad ♀ JAT

49 *Myrmotherula iheringi*
Ad ♂ JAT



49 *Myrmotherula iheringi*
Ad ♂ JAT

49 *Myrmotherula iheringi*
Ad ♀ JAT

50 *Myrmotherula grisea*
Ad ♂ JAT

50 *Myrmotherula grisea*
Ad ♀ DFL

ANTBIRDS of Peru and Bolivia (including antthrushes, antpittas and gnateaters)

Joseph A. Tobias (Edward Grey Institute, Oxford University)

Photos by Roger Ahlman (RA), Mike Andersen (MA), Nick Athanas (NA), Steve Blain (SB), Dušan Brinkhuizen (DB), Rosalbina Butron (RB), Iain Campbell (IC), Bertrando Campos (BC), J. Chavez (JC), Arthur Grosset (AG), Wim Heylen (WH), Jon Hornbuckle (JH), Peter Hosner (PH), Caroline Isaksson (CI), Jill Jankowski (JJ), Philip Koch (PK), Daniel F. Lane (DFL), Daniel Lebbin (DL), Huw Lloyd (HL), Chris Merkord (CM), Paul Noakes (PN), Scott Olmstead (SO), Chris Perrins (CP), Zacharia Peterson (ZP), Fernando Angulo Pratalongo (FAP), Robert Scanlon (RS), Ryan Shaw (RSh), Joseph A. Tobias (JAT), Wendy Tori (WT), Ursula Valdez (UV), Thomas Valqui (TV), Rob Williams (RW), Kevin Zimmer (KZ).
© Environmental & Conservation Programs, The Field Museum, Chicago, IL 60605 USA. [RRC@fmnh.org] | www.fmnh.org/animalguides/ | Rapid Color Guide #256 version 1, 11/2009



51 *Myrmotherula menetriesi menetriesi*
Ad ♂ JAT

51 *Myrmotherula menetriesi menetriesi*
Imm ♂ JAT

51 *Myrmotherula menetriesi*
Ad ♀ AG

52 *Myrmotherula assimilis*
Ad ♂ JAT



52 *Myrmotherula assimilis*
Ad ♀ JAT

53 *Dichrozona cincta*
Ad ♂ JAT

53 *Dichrozona cincta*
Ad ♀ JAT

54 *Myrmochilus strigilatus suspicax*
Ad ♂ JAT



54 *Myrmochilus strigilatus strigilatus*
Ad ♀ AG

55 *Herpsilochmus atricapillus*
Ad ♂ BC

56 *Herpsilochmus dugandii*
Ad ♂ IC

57 *Herpsilochmus longirostris*
Ad ♂ JAT



58 *Herpsilochmus axillaris axillaris*
Ad ♂ JAT

59 *Microrhophias quixensis albicauda*
Ad ♂ JAT

59 *Microrhophias quixensis albicauda*
Ad ♀ JAT

60 *Formicivora grisea rufiventris*
Ad ♂ JAT

ANTBIRDS of Peru and Bolivia (including antthrushes, antpittas and gnateaters)

Joseph A. Tobias (Edward Grey Institute, Oxford University)

Photos by Roger Ahlman (RA), Mike Andersen (MA), Nick Athanas (NA), Steve Blain (SB), Dušan Brinkhuizen (DB), Rosalbina Butron (RB), Iain Campbell (IC), Bertrando Campos (BC), J. Chavez (JC), Arthur Grosset (AG), Wim Heylen (WH), Jon Hornbuckle (JH), Peter Hosner (PH), Caroline Isaksson (CI), Jill Jankowski (JJ), Philip Koch (PK), Daniel F. Lane (DFL), Daniel Lebbin (DL), Huw Lloyd (HL), Chris Merford (CM), Paul Noakes (PN), Scott Olmstead (SO), Chris Perrins (CP), Zacharia Peterson (ZP), Fernando Angulo Pratonlongo (FAP), Robert Scanlon (RS), Ryan Shaw (RSh), Joseph A. Tobias (JAT), Wendy Tori (WT), Ursula Valdez (UV), Thomas Valqui (TV), Rob Williams (RW), Kevin Zimmer (KZ).
© Environmental & Conservation Programs, The Field Museum, Chicago, IL 60605 USA. [RRC@fmnh.org] | www.fmnh.org/animalguides/ | Rapid Color Guide #256 version 1, 11/2009



60 *Formicivora grisea rufiventris*
Ad ♀ JAT



61 *Formicivora rufa rufa*
Ad ♂ JAT



61 *Formicivora rufa rufa*
Ad ♀ JH



62 *Drymophila devillei devillei*
Ad ♂ JAT



62 *Drymophila devillei devillei*
Ad ♂ UV



63 *Drymophila caudata*
Ad ♂ DB



63 *Drymophila caudata*
Ad ♀ JAT



64 *Hypocnemis peruviana peruviana*
Ad ♂ JAT



64 *Hypocnemis peruviana peruviana*
Ad ♀ JAT



65 *Hypocnemis subflava collinsi*
Ad ♂ JAT



65 *Hypocnemis subflava collinsi*
Ad ♀ JAT



66 *Hypocnemis ochrogyna*
Ad ♂ JAT



67 *Hypocnemis hypoxantha*
Ad ♂ JAT



67 *Hypocnemis hypoxantha*
Ad ♀ JAT



68 *Terenura callinota*
Ad ♂ JAT



69 *Terenura humeralis*
Ad ♂ JAT

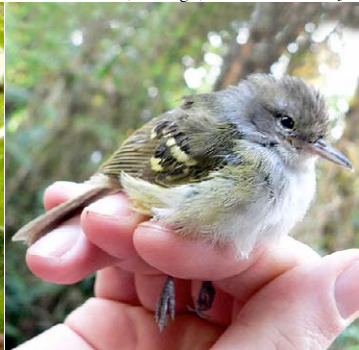
ANTBIRDS of Peru and Bolivia (including (including antthrushes, antpittas and gnateaters)

Joseph A. Tobias (Edward Grey Institute, Oxford University)

Photos by Roger Ahlman (RA), Mike Andersen (MA), Nick Athanas (NA), Steve Blain (SB), Dušan Brinkhuizen (DB), Rosalbina Butron (RB), Iain Campbell (IC), Bertrando Campos (BC), J. Chavez (JC), Arthur Grosset (AG), Wim Heylen (WH), Jon Hornbuckle (JH), Peter Hosner (PH), Caroline Isaksson (CI), Jill Jankowski (JJ), Philip Koch (PK), Daniel F. Lane (DFL), Daniel Lebbin (DL), Huw Lloyd (HL), Chris Merkord (CM), Paul Noakes (PN), Scott Olmstead (SO), Chris Perrins (CP), Zacharia Peterson (ZP), Fernando Angulo Prtolongo (FAP), Robert Scanlon (RS), Ryan Shaw (RSh), Joseph A. Tobias (JAT), Wendy Tori (WT), Ursula Valdez (UV), Thomas Valqui (TV), Rob Williams (RW), Kevin Zimmer (KZ).
© Environmental & Conservation Programs, The Field Museum, Chicago, IL 60605 USA. [RRC@fmnh.org] [www.fmnh.org/animalguides/] Rapid Color Guide #256 version 1, 11/2009



70 *Terenura sharpei*
Ad ♂ JAT



70 *Terenura sharpei*
Ad ♀ JC



71 *Cercomacra nigrescens fuscicauda*
Ad ♂ JAT



71 *Cercomacra nigrescens fuscicauda*
Ad ♀ JAT



72 *Cercomacra serva*
Ad ♂ JAT



72 *Cercomacra serva*
Ad ♀ JAT



73 *Cercomacra melanaria*
Ad ♂ KZ



74 *Cercomacra manu*
Ad ♂ DL



74 *Cercomacra manu*
Ad ♀ DL



75 *Pyriglena leuconota hellmayri*
Ad ♂ JAT



75 *Pyriglena leuconota marcapatensis*
Ad ♀ CM



75 *Pyriglena leuconota picea*
Ad ♀ PH



75 *Pyriglena leuconota pacifica*
Ad ♀ DFL



76 *Myrmoborus leucophrys*
Ad ♂ JAT



76 *Myrmoborus leucophrys*
Ad ♀ JAT



77 *Myrmoborus lugubris*
Ad ♂ JAT

ANTBIRDS of Peru and Bolivia (including antthrushes, antpittas and gnateaters)

Joseph A. Tobias (Edward Grey Institute, Oxford University)

Photos by Roger Ahlman (RA), Mike Andersen (MA), Nick Athanas (NA), Steve Blain (SB), Dušan Brinkhuizen (DB), Rosalbina Butron (RB), Iain Campbell (IC), Bertrando Campos (BC), J. Chavez (JC), Arthur Grosset (AG), Wim Heylen (WH), Jon Hornbuckle (JH), Peter Hosner (PH), Caroline Isaksson (CI), Jill Jankowski (JJ), Philip Koch (PK), Daniel F. Lane (DFL), Daniel Lebbin (DL), Huw Lloyd (HL), Chris Merkord (CM), Paul Noakes (PN), Scott Olmstead (SO), Chris Perrins (CP), Zacharia Peterson (ZP), Fernando Angulo Pralongo (FAP), Robert Scanlon (RS), Ryan Shaw (RSh), Joseph A. Tobias (JAT), Wendy Tori (WT), Ursula Valdez (UV), Thomas Valqui (TV), Rob Williams (RW), Kevin Zimmer (KZ).
© Environmental & Conservation Programs, The Field Museum, Chicago, IL 60605 USA. [RRC@fmnh.org] | www.fmnh.org/animalguides/ | Rapid Color Guide #256 version 1, 11/2009



77 *Myrmoborus lugubris*
Ad ♀ NA



78 *Myrmoborus myotherinus myotherinus*
Ad ♂ JAT



78 *Myrmoborus myotherinus myotherinus*
Ad ♀ JAT



78 *Myrmoborus myotherinus myotherinus*
Imm ♀ JAT



79 *Myrmoborus melanurus*
Ad ♂ RS



80 *Hypocnemoides melanopogon*
Ad ♂ JAT



81 *Hypocnemoides maculicauda*
Ad ♂ JAT



81 *Hypocnemoides melanopogon*
Ad ♀ AG



82 *Myrmochanes hemileucus*
Ad ♀ RA



83 *Sclateria naevia argentata*
Ad ♂ JAT



84 *Percnostola lophotes*
Ad ♂ JAT



84 *Percnostola lophotes*
Ad ♂ JAT



84 *Percnostola lophotes*
Ad ♀ JAT



85 *Percnostola arenarum*
Ad ♂ DFL



85 *Percnostola arenarum*
Ad ♀ DFL



86 *Schistocichla humaythae*
Ad ♂ JAT

ANTBIRDS of Peru and Bolivia (including antthrushes, antpittas and gnateaters)

Joseph A. Tobias (Edward Grey Institute, Oxford University)

Photos by Roger Ahlman (RA), Mike Andersen (MA), Nick Athanas (NA), Steve Blain (SB), Dušan Brinkhuizen (DB), Rosalbina Butron (RB), Iain Campbell (IC), Bertrando Campos (BC), J. Chavez (JC), Arthur Grosset (AG), Wim Heylen (WH), Jon Hornbuckle (JH), Peter Hosner (PH), Caroline Isaksson (CI), Jill Jankowski (JJ), Philip Koch (PK), Daniel F. Lane (DFL), Daniel Lebbin (DL), Huw Lloyd (HL), Chris Merckold (CM), Paul Noakes (PN), Scott Olmstead (SO), Chris Perrins (CP), Zacharia Peterson (ZP), Fernando Angulo Pratulongo (FAP), Robert Scanlon (RS), Ryan Shaw (RSh), Joseph A. Tobias (JAT), Wendy Tori (WT), Ursula Valdez (UV), Thomas Valqui (TV), Rob Williams (RW), Kevin Zimmer (KZ).
© Environmental & Conservation Programs, The Field Museum, Chicago, IL 60605 USA. [RRC@fmnh.org] [www.fmnh.org/animalguides/] Rapid Color Guide #256 version 1, 11/2009



87 *Schistocichla brunneiceps*
Ad ♂ CM



88 *Schistocichla leucostigma subplumbea*
Ad ♀ CM



89 *Myrmeciza hemimelaena*
Ad ♂ JAT



89 *Myrmeciza hemimelaena*
Imm ♂ JAT



89 *Myrmeciza hemimelaena*
Ad ♀ JAT



90 *Myrmeciza atrothorax melanura*
Ad ♂ JAT



90 *Myrmeciza atrothorax melanura*
Ad ♀ JH



91 *Myrmeciza goeldii*
Ad ♀ JAT



91 *Myrmeciza goeldii*
Imm ♂ JAT



91 *Myrmeciza goeldii*
Ad ♀ JAT



92 *Myrmeciza hyperythra*
Ad ♂ JAT



92 *Myrmeciza hyperythra*
Ad ♀ JAT



93 *Myrmeciza fortis*
Ad ♂ JAT



93 *Myrmeciza fortis*
Ad ♀ UV



94 *Myrmeciza griseiceps*
Ad ♂ DFL



95 *Pithys albifrons*
Ad DFL

ANTBIRDS of Peru and Bolivia (including antthrushes, antpittas and gnateaters)

Joseph A. Tobias (Edward Grey Institute, Oxford University)

Photos by Roger Ahlman (RA), Mike Andersen (MA), Nick Athanas (NA), Steve Blain (SB), Dušan Brinkhuizen (DB), Rosalbina Butron (RB), Iain Campbell (IC), Bertrando Campos (BC), J. Chavez (JC), Arthur Grosset (AG), Wim Heylen (WH), Jon Hornbuckle (JH), Peter Hosner (PH), Caroline Isaksson (CI), Jill Jankowski (JJ), Philip Koch (PK), Daniel F. Lane (DFL), Daniel Lebbin (DL), Huw Lloyd (HL), Chris Merkord (CM), Paul Noakes (PN), Scott Olmstead (SO), Chris Perrins (CP), Zacharia Peterson (ZP), Fernando Angulo Pratulongo (FAP), Robert Scanlon (RS), Ryan Shaw (RSh), Joseph A. Tobias (JAT), Wendy Tori (WT), Ursula Valdez (UV), Thomas Valqui (TV), Rob Williams (RW), Kevin Zimmer (KZ).
© Environmental & Conservation Programs, The Field Museum, Chicago, IL 60605 USA. [RRC@fmnh.org] | www.fmnh.org/animalguides/ | Rapid Color Guide #256 version 1, 9/2009



96 *Pithys castanea*
Ad TV



97 *Gymnopithys salvini*
Ad ♂ JAT



97 *Gymnopithys salvini*
Ad ♀ JAT



98 *Rhegmatorhina melanosticta*
Ad JAT



98 *Rhegmatorhina melanosticta*
Juv JAT



99 *Hylophylax naevius*
Ad ♂ JJ



99 *Hylophylax naevius*
Ad ♀ PH



100 *Hylophylax punctulata*
Ad ♂ JAT



100 *Hylophylax punctulata*
Ad ♂ DL



101 *Willisornis poecilinotus griseiventris*
Ad ♂ PK



101 *Willisornis poecilinotus griseiventris*
Imm ♂ JAT



101 *Willisornis poecilinotus griseiventris*
Imm ♂ JAT



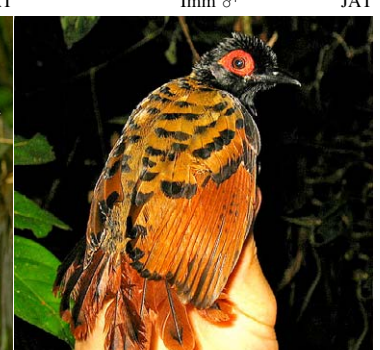
101 *Willisornis poecilinotus griseiventris*
Ad ♀ JAT



101 *Willisornis poecilinotus lepidonota*
Ad ♀ JAT



102 *Phlegopsis nigromaculata nigromaculata*
Ad JAT



102 *Phlegopsis nigromaculata bowmani*
Ad JAT

ANTBIRDS of Peru and Bolivia (including antthrushes, antpittas and gnateaters)

Joseph A. Tobias (Edward Grey Institute, Oxford University)

Photos by Roger Ahlman (RA), Mike Andersen (MA), Nick Athanas (NA), Steve Blain (SB), Dušan Brinkhuizen (DB), Rosalbina Butron (RB), Iain Campbell (IC), Bertrando Campos (BC), J. Chavez (JC), Arthur Grosset (AG), Wim Heylen (WH), Jon Hornbuckle (JH), Peter Hosner (PH), Caroline Isaksson (CI), Jill Jankowski (JJ), Philip Koch (PK), Daniel F. Lane (DFL), Daniel Lebbin (DL), Huw Lloyd (HL), Chris Merkord (CM), Paul Noakes (PN), Scott Olmstead (SO), Chris Perrins (CP), Zacharia Peterson (ZP), Fernando Angulo Pratonlongo (FAP), Robert Scanlon (RS), Ryan Shaw (RSh), Joseph A. Tobias (JAT), Wendy Tori (WT), Ursula Valdez (UV), Thomas Valqui (TV), Rob Williams (RW), Kevin Zimmer (KZ).
© Environmental & Conservation Programs, The Field Museum, Chicago, IL 60605 USA. [RRC@fmnh.org] | www.fmnh.org/animalguides/ | Rapid Color Guide #256 version 1, 11/2009



102 *Phlegopsis nigromaculata bowmani*
Juv JAT



103 *Phlegopsis erythroptera*
Ad ♂ TV



104 *Formicarius colma*
Ad JAT



104 *Formicarius colma*
Juv DL



105 *Formicarius analis*
Ad JAT



106 *Formicarius rufifrons*
Ad HL



107 *Formicarius rufipectus*
Ad CM



108 *Chamaeza campanisona boliviana*
Ad JAT



108 *Chamaeza campanisona boliviana*
Ad JAT



109 *Chamaeza molissima*
Ad DL



110 *Grallaria squamigera squamigera*
Ad WH



110 *Grallaria squamigera canicauda*
Ad RW



111 *Grallaria guatemalensis*
Ad FAP



112 *Grallaria ruficapilla*
Ad RSh



112 *Grallaria ruficapilla*
Ad DB



113 *Grallaria andicola*
Ad JAT

ANTBIRDS of Peru and Bolivia (including antthrushes, antpittas and gnateaters)

Joseph A. Tobias (Edward Grey Institute, Oxford University)

Photos by Roger Ahlman (RA), Mike Andersen (MA), Nick Athanas (NA), Steve Blain (SB), Dušan Brinkhuizen (DB), Rosalbina Butron (RB), Iain Campbell (IC), Bertrando Campos (BC), J. Chavez (JC), Arthur Grosset (AG), Wim Heylen (WH), Jon Hornbuckle (JH), Peter Hosner (PH), Caroline Isaksson (CI), Jill Jankowski (JJ), Philip Koch (PK), Daniel F. Lane (DFL), Daniel Lebbin (DL), Huw Lloyd (HL), Chris Merkord (CM), Paul Noakes (PN), Scott Olmstead (SO), Chris Perrins (CP), Zacharia Peterson (ZP), Fernando Angulo Pratulongo (FAP), Robert Scanlon (RS), Ryan Shaw (RSh), Joseph A. Tobias (JAT), Wendy Tori (WT), Ursula Valdez (UV), Thomas Valqui (TV), Rob Williams (RW), Kevin Zimmer (KZ).
© Environmental & Conservation Programs, The Field Museum, Chicago, IL 60605 USA. [RRC@fmnh.org] | www.fmnh.org/animalguides/ | Rapid Color Guide #256 version 1, 11/2009



113 *Grallaria andicola*
Ad PH



114 *Grallaria ridgelyi*
Ad DB



114 *Grallaria ridgelyi*
Imm CP



115 *Grallaria nuchalis*
Ad DB



116 *Grallaria albigula*
Ad JAT



117 *Grallaria hypoleuca*
Ad NA



118 *Grallaria erythroleuca*
Ad CI



119 *Grallaria (rufula) obscura*
Ad MA



119 *Grallaria (rufula) cajamarcae*
Ad FAP



119 *Grallaria (rufula) taxon nov.*
Ad (La Paz) JAT



119 *Grallaria (rufula) cochabambae*
Ad JAT



120 *Grallaria blakei*
Ad PH



121 *Grallaria quitensis*
Ad SB



122 *Grallaria erythrotis*
Ad JAT



123 *Hylopezus auricularis*
Ad JAT



124 *Hylopezus berlepschi*
Ad JAT

ANTBIRDS of Peru and Bolivia (including antthrushes, antpittas and gnateaters)

Joseph A. Tobias (Edward Grey Institute, Oxford University)

Photos by Roger Ahlman (RA), Mike Andersen (MA), Nick Athanas (NA), Steve Blain (SB), Dušan Brinkhuizen (DB), Rosalbina Butron (RB), Iain Campbell (IC), Bertrando Campos (BC), J. Chavez (JC), Arthur Grosset (AG), Wim Heylen (WH), Jon Hornbuckle (JH), Peter Hosner (PH), Caroline Isaksson (CI), Jill Jankowski (JJ), Philip Koch (PK), Daniel F. Lane (DFL), Daniel Lebbin (DL), Huw Lloyd (HL), Chris Merford (CM), Paul Noakes (PN), Scott Olmstead (SO), Chris Perrins (CP), Zacharia Peterson (ZP), Fernando Angulo Pratulongo (FAP), Robert Scanlon (RS), Ryan Shaw (RSh), Joseph A. Tobias (JAT), Wendy Tori (WT), Ursula Valdez (UV), Thomas Valqui (TV), Rob Williams (RW), Kevin Zimmer (KZ).
© Environmental & Conservation Programs, The Field Museum, Chicago, IL 60605 USA. [RRC@fmnh.org] | www.fmnh.org/animalguides/ | Rapid Color Guide #256 version 1, 11/2009



125 *Myrmothera campanisona*
Ad JAT



126 *Grallaricula flavirostris boliviana*
Ad JAT



127 *Grallaricula ochraceifrons*
Ad JH



128 *Grallaricula ferruginepectus leymebambae*
Ad JJ



128 *Grallaricula ferruginepectus leymebambae*
Imm RB



129 *Grallaricula nana nana*
Ad JAT



130 *Conopophaga peruviana*
Imm ♂ JAT



130 *Conopophaga peruviana*
Ad ♀ JAT



130 *Conopophaga peruviana*
Ad ♀ PH



131 *Conopophaga castaneiceps brunneinucha*
Ad ♂ PH



131 *Conopophaga castaneiceps chapmani*
Juv ♂ JAT



131 *Conopophaga castaneiceps brunneinucha*
Ad ♀ PH



131 *Conopophaga castaneiceps brunneinucha*
Juv PH



132 *Conopophaga ardesiaca*
Ad ♂ JAT



132 *Conopophaga ardesiaca*
Ad ♀ JAT



132 *Conopophaga ardesiaca*
Juv JAT

ANTBIRDS of Peru and Bolivia (including antthrushes, antpittas and gnateaters)					
	Scientific name	English name		Scientific name	English name
1	<i>Cymbilaimus lineatus</i>	Fasciated Antshrike	67	<i>Hypocnemis hypoxantha</i>	Yellow-browed Antbird
2	<i>Cymbilaimus sanctaemariae</i>	Bamboo Antshrike	68	<i>Terenura callinota</i>	Rufous-rumped Antwren
3	<i>Batara cinerea</i>	Giant Antshrike	69	<i>Terenura humeralis</i>	Chestnut-shouldered Antwren
4	<i>Frederickena unduligera</i>	Undulated Antshrike	70	<i>Terenura sharpei</i>	Yellow-rumped Antwren
5	<i>Taraba major</i>	Great Antshrike	71	<i>Cercomacra nigrescens</i>	Blackish Antbird
6	<i>Sakesphorus canadensis</i>	Black-crested Antshrike	72	<i>Cercomacra serva</i>	Black Antbird
7	<i>Thamnophilus doliatius</i>	Barred Antshrike	73	<i>Cercomacra melanaria</i>	Mato Grosso Antbird
8	<i>Thamnophilus ruficapillus</i>	Rufous-capped Antshrike	74	<i>Cercomacra manu</i>	Manu Antbird
9	<i>Thamnophilus torquatus</i>	Rufous-winged Antshrike	75	<i>Pyriglena leuconota</i>	White-backed Fire-eye
10	<i>Thamnophilus zarumae</i>	Chapman's Antshrike	76	<i>Myrmoborus leucophrys</i>	White-browed Antbird
11	<i>Thamnophilus tenuipunctatus</i>	Lined Antshrike	77	<i>Myrmoborus lugubris</i>	Ash-breasted Antbird
12	<i>Thamnophilus palliatus</i>	Chestnut-backed Antshrike	78	<i>Myrmoborus myotherinus</i>	Black-faced Antbird
13	<i>Thamnophilus bernardi</i>	Collared Antshrike	79	<i>Myrmoborus melanurus</i>	Black-tailed Antbird
14	<i>Thamnophilus atrinucha</i>	Western Slaty-Antshrike	80	<i>Hypocnemoides melanopogon</i>	Black-chinned Antbird
15	<i>Thamnophilus schistaceus</i>	Plain-winged Antshrike	81	<i>Hypocnemoides maculicauda</i>	Band-tailed Antbird
16	<i>Thamnophilus murinus</i>	Mouse-coloured Antshrike	82	<i>Myrmochanes hemileuca</i>	Black-and-white Antbird
17	<i>Thamnophilus cryptoleucus</i>	Castelnau's Antshrike	83	<i>Scaligeria naevia</i>	Silvered Antbird
18	<i>Thamnophilus punctatus</i>	Northern Slaty-Antshrike	84	<i>Percnostola lophotes</i>	White-lined Antbird
19	<i>Thamnophilus stictocephalus</i>	Natterer's Slaty-Antshrike	85	<i>Percnostola arenarum</i>	Allpahuayo Antbird
20	<i>Thamnophilus sticturus</i>	Bolivian Slaty-Antshrike	86	<i>Schistocichla humaythae</i>	Humaita Antbird
21	<i>Thamnophilus caerulescens</i>	Variable Antshrike	87	<i>Schistocichla brunneiceps</i>	Brownish-headed Antbird
22	<i>Thamnophilus unicolor</i>	Uniform Antshrike	88	<i>Schistocichla leucostigma</i>	Spot-winged Antbird
23	<i>Thamnophilus aethiops</i>	White-shouldered Antshrike	89	<i>Myrmeciza hemimelaena</i>	Chestnut-tailed Antbird
24	<i>Thamnophilus aroyae</i>	Upland Antshrike	90	<i>Myrmeciza atrothorax</i>	Black-throated Antbird
25	<i>Thamnophilus amazonicus</i>	Amazonian Antshrike	91	<i>Myrmeciza goeldii</i>	Goeldi's Antbird
26	<i>Megascictus margaritatus</i>	Pearly Antshrike	92	<i>Myrmeciza hyperythra</i>	Plumbeous Antbird
27	<i>Neotantes niger</i>	Black Bushbird	93	<i>Myrmeciza fortis</i>	Sooty Antbird
28	<i>Dysithamnus mentalis</i>	Plain Antvireo	94	<i>Myrmeciza griseiceps</i>	Grey-headed Antbird
29	<i>Dysithamnus occidentalis</i>	Bicoloured Antvireo	95	<i>Pithys albifrons</i>	White-plumed Antbird
30	<i>Thamnomanes ardesiacus</i>	Dusky-throated Antshrike	96	<i>Pithys castanea</i>	White-masked Antbird
31	<i>Thamnomanes saturninus</i>	Saturnine Antshrike	97	<i>Gymnophrys salvini</i>	White-throated Antbird
32	<i>Thamnomanes caesius</i>	Cinereous Antshrike	98	<i>Rhegmatorhina melanosticta</i>	Hairy-crested Antbird
33	<i>Thamnomanes schistogynus</i>	Bluish-Slate Antshrike	99	<i>Hyllophylax naevius</i>	Spot-backed Antbird
34	<i>Pygiptila stellaris</i>	Spot-winged Antshrike	100	<i>Hyllophylax punctulata</i>	Dot-backed Antbird
35	<i>Epinecrophylla leucophthalma</i>	White-eyed Antwren	101	<i>Willisornis poecilinotus</i>	Scale-backed Antbird
36	<i>Epinecrophylla haematonota</i>	Stipple-throated Antwren	102	<i>Phlegopsis nigromaculata</i>	Black-spotted Bare-eye
37	<i>Epinecrophylla spodiota</i>	Foothill Antwren	103	<i>Phlegopsis erythroptera</i>	Reddish-winged Bare-eye
38	<i>Epinecrophylla ornata</i>	Ornate Antwren	104	<i>Formicarius colma</i>	Rufous-capped Antthrush
39	<i>Epinecrophylla erythrura</i>	Rufous-tailed Antwren	105	<i>Formicarius analis</i>	Black-faced Antthrush
40	<i>Myrmotherula brachyura</i>	Pygmy Antwren	106	<i>Formicarius rufifrons</i>	Rufous-fronted Antthrush
41	<i>Myrmotherula sclateri</i>	Sclater's Antwren	107	<i>Formicarius rufipectus</i>	Rufous-breasted Antthrush
42	<i>Myrmotherula multistriata</i>	Amazonian Streaked Antwren	108	<i>Chamaeza campanisona</i>	Short-tailed Antthrush
43	<i>Myrmotherula cherriei</i>	Cherrie's Antwren	109	<i>Chamaeza molissima</i>	Barred Antthrush
44	<i>Myrmotherula longicauda</i>	Stripe-chested Antwren	110	<i>Grallaria squamigera</i>	Undulated Antpitta
45	<i>Myrmotherula axillaris</i>	White-flanked Antwren	111	<i>Grallaria guatemalensis</i>	Scaled Antpitta
46	<i>Myrmotherula huxwelli</i>	Plain-throated Antwren	112	<i>Grallaria ruficapilla</i>	Chestnut-crowned Antpitta
47	<i>Myrmotherula schisticolor</i>	Slaty Antwren	113	<i>Grallaria andicolus</i>	Stripe-headed Antpitta
48	<i>Myrmotherula longipennis</i>	Long-winged Antwren	114	<i>Grallaria ridgelyi</i>	Jocotoco Antpitta
49	<i>Myrmotherula iheringi</i>	Ihering's Antwren	115	<i>Grallaria nuchalis</i>	Chestnut-naped Antpitta
50	<i>Myrmotherula grisea</i>	Ashy Antwren	116	<i>Grallaria albigula</i>	White-throated Antpitta
51	<i>Myrmotherula menetriesii</i>	Grey Antwren	117	<i>Grallaria hypoleuca</i>	White-bellied Antpitta
52	<i>Myrmotherula assimilis</i>	Leaden Antwren	118	<i>Grallaria erythroleuca</i>	Red-and-white Antpitta
53	<i>Dichrozona cineta</i>	Banded Antbird	119	<i>Grallaria rufula</i>	Rufous Antpitta
54	<i>Myrmochilus strigilatus</i>	Stripe-backed Antbird	120	<i>Grallaria blakei</i>	Chestnut Antpitta
55	<i>Herpsilochmus atricapillus</i>	Black-capped Antwren	121	<i>Grallaria quitensis</i>	Tawny Antpitta
56	<i>Herpsilochmus dugandi</i>	Dugand's Antwren	122	<i>Grallaria erythrotis</i>	Rufous-faced Antpitta
57	<i>Herpsilochmus longirostris</i>	Large-billed Antwren	123	<i>Hyllopezus auricularis</i>	Masked Antpitta
58	<i>Herpsilochmus axillaris</i>	Yellow-breasted Antwren	124	<i>Hyllopezus berlepschi</i>	Amazonian Antpitta
59	<i>Microrhopias quixensis</i>	Dot-winged Antwren	125	<i>Myrmothera campanisona</i>	Thrush-like Antpitta
60	<i>Formicivora grisea</i>	White-fringed Antwren	126	<i>Grallaricula flavirostris</i>	Ochre-breasted Antpitta
61	<i>Formicivora rufa</i>	Rusty-backed Antwren	127	<i>Grallaricula ochraceifrons</i>	Ochre-fronted Antpitta
62	<i>Drymophila devillei</i>	Striated Antbird	128	<i>Grallaricula ferrugineipectus</i>	Rusty-breasted Antpitta
63	<i>Drymophila caudata</i>	Long-tailed Antbird	129	<i>Grallaricula nana</i>	Slate-crowned Antpitta
64	<i>Hypocnemis peruviana</i>	Peruvian Warbling-Antbird	130	<i>Conopophaga peruviana</i>	Ash-throated Gnateater
65	<i>Hypocnemis subflava</i>	Yellow-breasted Warbling-Antbird	131	<i>Conopophaga castaneiceps</i>	Chestnut-crowned Gnateater
66	<i>Hypocnemis ochrogyna</i>	Rondonian Warbling-Antbird	132	<i>Conopophaga ardesiaca</i>	Slaty Gnateater