

MARIPOSAS del Bajo Río Caquetá y Apaporis (Amazonia Colombiana)

LYCAENIDAE

Jaime Pinzón-C. - - Conservación Internacional Colombia

Fotos de J. Pinzón-C. Producido por: T. S. Wachter, R. B. Foster, con el apoyo del Ellen Hyndman Fund.

© Jaime Pinzón-C. [jpc_550@hotmail.com] Conservation International - Colombia, Cra 13 # 71-41 Bogotá, Colombia: [http://www.conservation.org.co]

© Environmental & Conservation Programs, The Field Museum, Chicago, IL 60605 USA. [RRC@fmnh.org] [www.fmnh.org/animalguides] Rapid Color Guide #225 versión 2 02/2009



DORSAL



VENTRAL



Arawacus aetolus

Atlides inachus

Busbiina bosora

Theritas hemon



Eumaeus minyas

♂

Janthecla sista

♀

Leptotes cassius

2 MARIPOSAS del Bajo Río Caquetá y Apaporis (Amazonia Colombiana)

LYCAENIDAE

Jaime Pinzón-C. - - Conservación Internacional Colombia

Fotos de J. Pinzón-C. Producido por: T. S. Wachter, R. B. Foster, con el apoyo del Ellen Hyndman Fund.

© Jaime Pinzón-C. [jpc_550@hotmail.com] Conservation International - Colombia, Cra 13 # 71-41 Bogotá, Colombia: [http://www.conservation.org.co]

© Environmental & Conservation Programs, The Field Museum, Chicago, IL 60605 USA. [RRC@fmnh.org] [www.fmnh.org/animalguides] Rapid Color Guide # 225 versión 2 02/2009

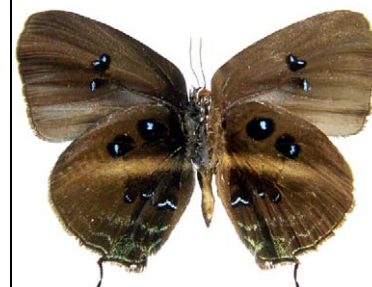


DORSAL



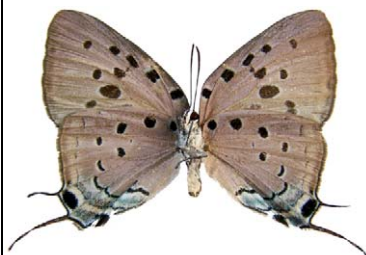
VENTRAL

Iaspis sp



Evenus satyroides

Mithras elis



Panthiades bitias

Pseudolycaena marsyas

Calycopis calus

Enos maculata

















LYCAENIDAE

Jaime Pinzón-C. - - Conservación Internacional Colombia

Fotos de J. Pinzón-C. Producido por: T. S. Wachter, R. B. Foster, con el apoyo del Ellen Hyndman Fund.

© Jaime Pinzón-C. [jpc_550@hotmail.com] Conservation International - Colombia, Cra 13 # 71-41 Bogotá, Colombia: [http://www.conservation.org.co]

© Environmental & Conservation Programs, The Field Museum, Chicago, IL 60605 USA. [RRC@fmnh.org] [www.fmnh.org/animalguides] Rapid Color Guide # 225 versión 2 02/2009

			
<p>DORSAL</p>			
			
<p>VENTRAL</p>			
<p><i>Theclopsis lydus</i></p>	<p><i>Theritas lisus</i></p>	<p><i>Thestius pholeus</i></p>	<p><i>Celmia celmus</i></p>
			
<p><i>Ziegleria hesperitis</i></p>	<p>Indet.</p>	<p>Indet.</p>	<p>Indet.</p>
			
<p><i>Ziegleria hesperitis</i></p>	<p>Indet.</p>	<p>Indet.</p>	<p>Indet.</p>

4 MARIPOSAS del Bajo Río Caquetá y Apaporis (Amazonia Colombiana)

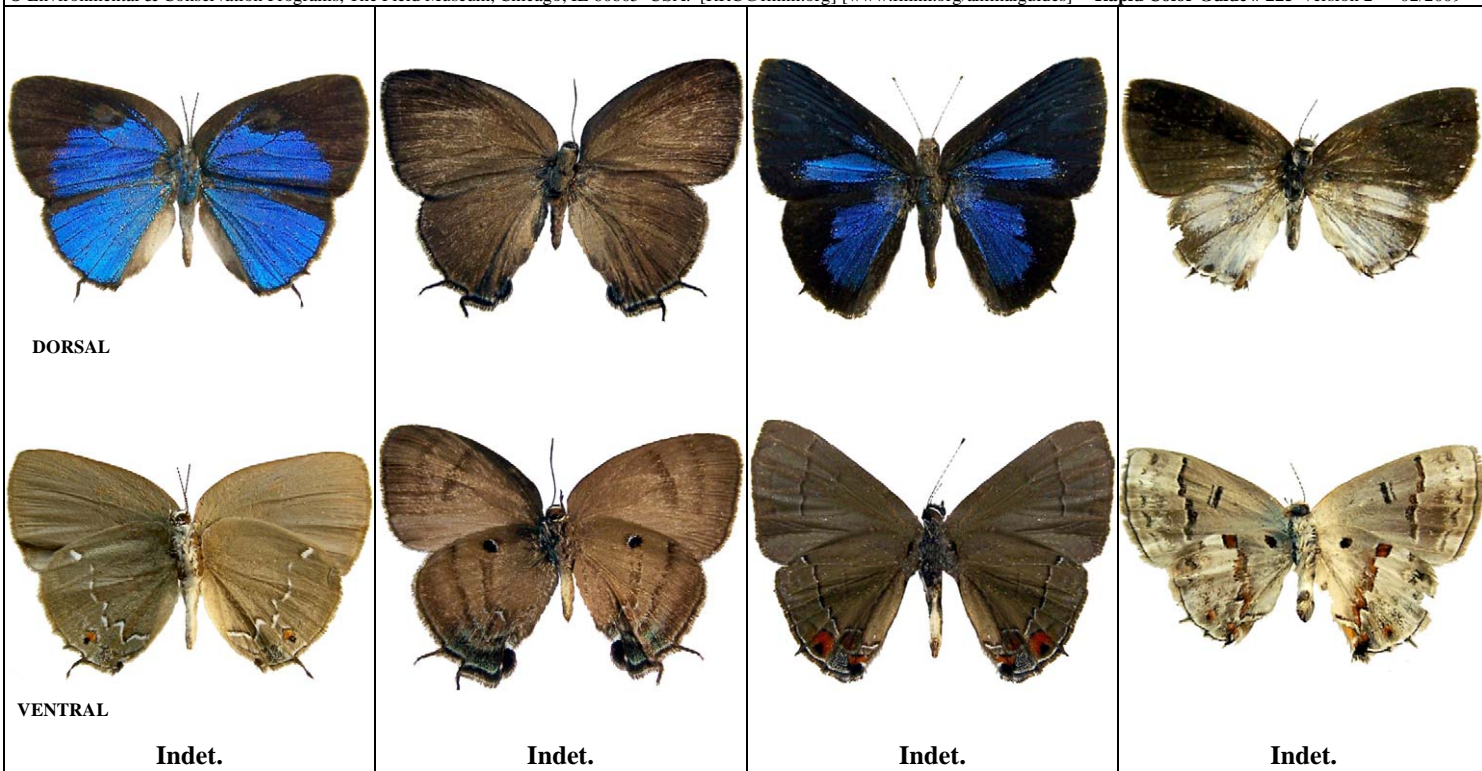
LYCAENIDAE

Jaime Pinzón-C. - - Conservación Internacional Colombia

Fotos de J. Pinzón-C. Producido por: T. S. Wachter, R. B. Foster, con el apoyo del Ellen Hyndman Fund.

© Jaime Pinzón-C. [jpc_550@hotmail.com] Conservation International - Colombia, Cra 13 # 71-41 Bogotá, Colombia: [http://www.conservation.org.co]

© Environmental & Conservation Programs, The Field Museum, Chicago, IL 60605 USA. [RRC@fmnh.org] [www.fmnh.org/animalguides] **Rapid Color Guide # 225** versión 2 02/2009



LYCAENIDAE

- Arawacus aetolus* (Sulzer, 1776)
- Atlides inachus* (Cramer, 1775)
- Busbiina bosora* (Hewitson, 1870)
- Calycopis calus* (Godart, 1824)
- Celmia celmus* (Cramer, 1775)
- Enos maculata* (Lathy, 1936)
- Eumaeus minyas* (Hübner, [1809])
- Evenus satyroides* (Hewitson, 1865)
- Janthecla sista* (Hewitson, 1867)
- Leptotes cassius* (Cramer, 1775)
- Mithras elis* (Cramer, 1779)
- Panthiades bitias* (Cramer, 1777)
- Pseudolycaena marsyas* (Lamas, 1981)
- Theclopsis lydus* (Hübner, [1819])
- Theritas hemon* (Cramer, 1775)
- Theritas lisus* (Stoll, 1790)
- Thestius pholeus* (Cramer, 1777)
- Ziegleria hesperitis* (Butler & Druce, 1872)

