

MARIPOSAS del Bajo Río Caquetá y Apaporis (Amazonia Colombiana)

















NYMPHALALIDAE: LIMENTITIDINAE<sup>1</sup> y CHARAXINAE<sup>2</sup>

Jaime Pinzón-C. - - Conservación Internacional Colombia

Fotos de J. Pinzón-C. Producido por: T. Wachter, R. B. Foster, & S. Kaplan, con el apoyo de Gordon & Betty Moore Foundation.

© Jaime Pinzón-C. [jpc\_550@hotmail.com] Conservation International – Colombia, Cra 13 # 71-41 Bogotá, Colombia: [http://www.conservation.org.co]

© Environmental & Conservation Programs, The Field Museum, Chicago, IL 60605 USA. [RRC@fmnh.org] [www.fmnh.org/animalguides] **Rapid Color Guide # 207** versión 2 02/2009

			
<p>DORSAL</p>			
			
<p>VENTRAL</p>			
<p><i>Adelpha attica attica</i><sup>1</sup></p>	<p><i>Adelpha capucinus capucinus</i><sup>1</sup></p>	<p><i>Adelpha cocala cocala</i><sup>1</sup></p>	<p><i>Adelpha cytherea cytherea</i><sup>1</sup></p>
			
			
<p><i>Adelpha erotia erotia</i><sup>1</sup></p>	<p><i>Adelpha iphiculs iphiculus</i><sup>1</sup></p>	<p><i>Adelpha melona leucomoma</i><sup>1</sup></p>	<p><i>Adelpha mesentina</i><sup>1</sup></p>

## 2 MARIPOSAS del Bajo Río Caquetá y Apaporis (Amazonia Colombiana)

### NYMPHALALIDAE: LIMENTITIDINAE<sup>1</sup> y CHARAXINAE<sup>2</sup>

Jaime Pinzón-C. - - Conservación Internacional Colombia

Fotos de J. Pinzón-C. Producido por: T. Wachter, R. B. Foster, & S. Kaplan, con el apoyo de Gordon & Betty Moore Foundation.

© Jaime Pinzón-C. [jpc\_550@hotmail.com] Conservation International – Colombia, Cra 13 # 71-41 Bogotá, Colombia: [http://www.conservation.org.co]

© Environmental & Conservation Programs, The Field Museum, Chicago, IL 60605 USA. [RRC@fmnh.org] [www.fmnh.org/animalguides] **Rapid Color Guide # 207** versión 2 02/2009



DORSAL



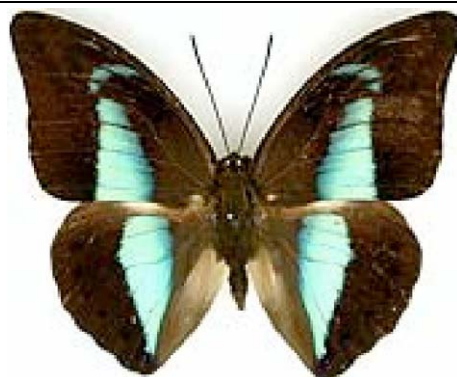
VENTRAL



*Adelpha naxia naxia*<sup>1</sup>

*Adelpha thesprotia*<sup>1</sup>

*Adelpha plesaura phliassa*<sup>1</sup>



*Archaeopreona demophon*<sup>2</sup>

*Archaeopreona licomedes*<sup>2</sup>

*Consul fabius*<sup>2</sup>

MARIPOSAS del Bajo Río Caquetá y Apaporis (Amazonia Colombiana)

NYMPHALALIDAE: LIMENTITIDINAE<sup>1</sup> y CHARAXINAE<sup>2</sup>

Jaime Pinzón-C. - - Conservación Internacional Colombia

Fotos de J. Pinzón-C. Producido por: T. Wachter, R. B. Foster, & S. Kaplan, con el apoyo de Gordon & Betty Moore Foundation.

© Jaime Pinzón-C. [jpc\_550@hotmail.com] Conservation International – Colombia, Cra 13 # 71-41 Bogotá, Colombia: [http://www.conservation.org.co]

© Environmental & Conservation Programs, The Field Museum, Chicago, IL 60605 USA. [RRC@fmnh.org] [www.fmnh.org/animalguides] **Rapid Color Guide # 207** versión 2 02/2009



DORSAL

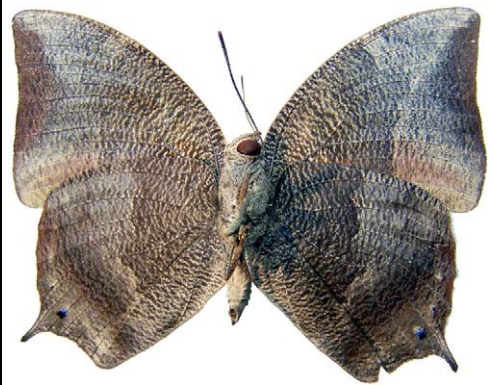


VENTRAL

*Fountainea ryphea ryphea*<sup>2</sup>



*Hypna clytemnestra*<sup>2</sup>



*Memphis glauca*<sup>2</sup>



*Memphis pseudiphis*<sup>2</sup>



*Memphis phantes vicina*<sup>2</sup>



*Zaretis itys*<sup>2</sup>

# 4 MARIPOSAS del Bajo Río Caquetá y Apaporis (Amazonia Colombiana)

## NYMPHALIDAE: LIMENTIDINAE<sup>1</sup> y CHARAXINAE<sup>2</sup>

Jaime Pinzón-C. - - Conservación Internacional Colombia

Fotos de J. Pinzón-C. Producido por: T. Wachter, R. B. Foster, & S. Kaplan, con el apoyo de Gordon & Betty Moore Foundation.

© Jaime Pinzón-C. [jpc\_550@hotmail.com] Conservation International – Colombia, Cra 13 # 71-41 Bogotá, Colombia: [http://www.conservation.org.co]

© Environmental & Conservation Programs, The Field Museum, Chicago, IL 60605 USA. [RRC@fmnh.org] [www.fmnh.org/animalguides] **Rapid Color Guide # 207** versión 2 02/2009



DORSAL



VENTRAL



*Prepona laertes*<sup>2</sup>

*Prepona pseudomphale*<sup>2</sup>

### LIMENTIDINAE

<i>Adelpha attica attica</i> (C. & R. Felder, 1867)
<i>Adelpha capucinus capucinus</i> (Walch, 1775)
<i>Adelpha cocala cocala</i> (Cramer, 1779)
<i>Adelpha cytherea cytherea</i> (Linnaeus, 1758)
<i>Adelpha erotia erotia</i> (Hewiston, 1847)
<i>Adelpha iphiculs iphiclus</i> (Linnaeus, 1758)
<i>Adelpha melona leucoma</i> (Fruhstorfer, 1915)
<i>Adelpha mesentina</i> (Cramer, 1777)
<i>Adelpha naxia naxia</i> (C. & R. Felder, 1867)
<i>Adelpha plesaure phliassa</i> (Godart, [1824])
<i>Adelpha thesprotia</i> (C. & R. Felder, 1867)

### CHARAXINAE

<i>Archaeoprepona demophon</i> (Linnaeus, 1758)
<i>Archaeoprepona licomedes</i> (Cramer, [1777])
<i>Consul fabius</i> (Cramer, [1775])
<i>Fountainea ryphea ryphea</i> (Cramer, 1775)
<i>Hypna clytemnestra</i> (Cramer, [1777])
<i>Memphis glauce</i> (C. & R. Felder, 1862)
<i>Memphis phantes vicina</i> (Hopffer, 1874)
<i>Memphis pseudiphis</i> (Staudinger, 1887)
<i>Prepona laertes</i> (Hübner, [1811])
<i>Prepona pseudomphale</i> (Le Moulton)
<i>Zaretis itys</i> (Cramer, 1777)