

Jean Philippe Boubli & Fabiana Couto-Santos

Fotos: J. P. Boubli & F. Couto-Santos. Produzido por: R. B. Foster & S. Kaplan. Apoio de Karen Strier, U. Wisconsin; de San Diego Zoo; e Gordon & Betty Moore Foundation.  
 © Jean Philippe Boubli & Fabiana Couto-Santos. [jpboubli@yahoo.com] CRES Zoological Society of San Diego, CA, USA; & Universidade Federal de Minas Gerais, Brasil.  
 © Environmental & Conservation Programs, The Field Museum, Chicago, IL 60605 USA. [www.fmh.org/plantguides] [RRC@fmnh.org] Rapid Color Guide # 189 versão 1



1 *Spondias venulosa*  
ANACARDIACEAE



2 *Cymbopetalum brasiliense*  
ANNONACEAE



3 *Ephedranthus cf.*  
ANNONACEAE



4 *Oxandra martiana*  
ANNONACEAE



5 *Xylopia aromatica*  
ANNONACEAE



6 *Xylopia sericea*  
ANNONACEAE



7 *Aspidosperma sp.*  
APOCYNACEAE



8 *Pacouria boliviensis*  
APOCYNACEAE



9 *Pacouria boliviensis*  
APOCYNACEAE



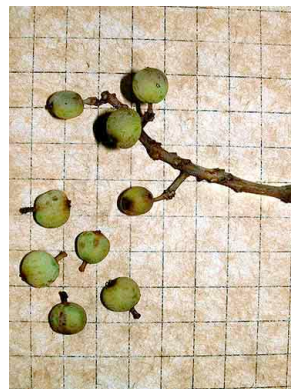
10 *Tabernaemontana laeta*  
APOCYNACEAE



11 *Ilex psammophila*  
AQUIFOLIACEAE



12 *Dendropanax cuneatum*  
ARALIACEAE



13 *Schefflera morototoni*  
ARALIACEAE



14 *Schefflera morototoni*  
ARALIACEAE



15 *Syagrus sp. 1*  
ARECACEAE



16 *Adenocalymma cymbalum*  
BIGNONIACEAE



17 *Anemopaegma setilobum*  
BIGNONIACEAE



18 *Clytostoma campanulatum*  
BIGNONIACEAE



19 *Jacaranda puberula*  
BIGNONIACEAE



20 *Macfadyena unguis-cati*  
BIGNONIACEAE



Jean Philippe Boubli &amp; Fabiana Couto-Santos

Fotos: J. P. Boubli & F. Couto-Santos. Produzido por: R. B. Foster & S. Kaplan. Apoio de Karen Strier, U. Wisconsin; de San Diego Zoo; e Gordon & Betty Moore Foundation.  
 © Jean Philippe Boubli & Fabiana Couto-Santos. [jpboubli@yahoo.com] CRES Zoological Society of San Diego, CA, USA; & Universidade Federal de Minas Gerais, Brasil.  
 © Environmental & Conservation Programs, The Field Museum, Chicago, IL 60605 USA. [www.fmh.org/plantguides] [RRC@fmnh.org] Rapid Color Guide # 189 versão 1



21 *Zeyheria tuberculosa*  
BIGNONIACEAE



22 *Cavanillesia umbellata*  
BOMBACACEAE



23 *Cordia ecalyculata*  
BORAGINACEAE



24 *Cordia trichoclada*  
BORAGINACEAE



25 *Protium* sp.  
BURSERACEAE



26 *Caryocar* sp.  
CARYOCARACEAE



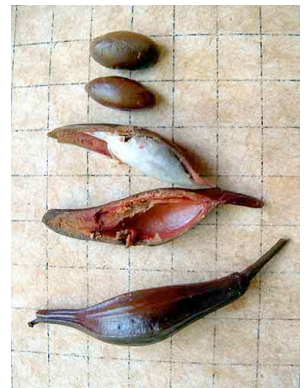
27 *Cecropia glaziovii* cf.  
CECROPIACEAE



28 *Maytenus salicifolia*  
CELASTRACEAE



29 *Garcinia gardneriana*  
CLUSIACEAE



30 *Tovomita brasiliensis*  
CLUSIACEAE



31 *Terminalia glabrescens*  
COMBRETACEAE



32 *Doliticarpus brevipedicellatus*  
DILLENIAEAE



33 *Sloanea garcheana*  
ELAEOCARPACEAE



34 *Sloanea monosperma*  
ELAEOCARPACEAE



35 *Erythroxylum subtrotundum*  
ERYTHROXYLACEAE



36 *Mabea fistulosa*  
EUPHORBIACEAE



37 *Mabea* sp.  
EUPHORBIACEAE



38 *Maprounea guianensis*  
EUPHORBIACEAE



39 *Pachystroma longifolium* cf.  
EUPHORBIACEAE



40 *Tragia* sp. 1  
EUPHORBIACEAE



Jean Philippe Boubli & Fabiana Couto-Santos

Fotos: J. P. Boubli & F. Couto-Santos. Produzido por: R. B. Foster & S. Kaplan. Apoio de Karen Strier, U. Wisconsin; de San Diego Zoo; e Gordon & Betty Moore Foundation.  
 © Jean Philippe Boubli & Fabiana Couto-Santos. [jboubli@yahoo.com] CRES Zoological Society of San Diego, CA, USA; & Universidade Federal de Minas Gerais, Brasil.  
 © Environmental & Conservation Programs, The Field Museum, Chicago, IL 60605 USA. [www.fmh.org/plantguides] [RRC@fmh.org] Rapid Color Guide # 189 versão 1



41 *Acacia polyphylla*  
FABACEAE-MIMOS.



42 *Albizia polycephala*  
FABACEAE-MIMOS.



43 *Anadenanthera colubrine*  
FABACEAE-MIMOS.



44 *Anadenanthera colubrine*  
FABACEAE-MIMOS.



45 *Bauhinia fusconervis*  
FABACEAE-CAESALP.



46 *Camptosema isopetalum*  
FABACEAE-PAPIL.



47 *Copaifera langsdorffii*  
FABACEAE-CAESALP.



48 *Enterolobium* sp.  
FABACEAE-MIMOS.



49 *Hymenaea courbaril*  
FABACEAE-CAESALP.



50 *Inga capitata*  
FABACEAE-MIMOS.



51 *Inga sapindoides*  
FABACEAE-MIMOS.



52 *Inga sapindoides*  
FABACEAE-MIMOS.



53 *Inga hispida*  
FABACEAE-MIMOS.



54 *Machaerium uncinatum*  
FABACEAE-PAPIL.



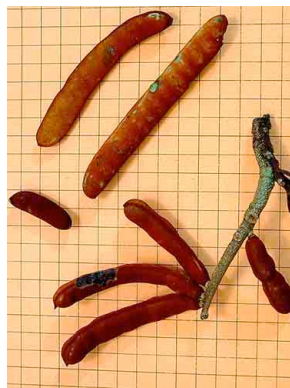
55 *Mucuna urens*  
FABACEAE-PAPIL.



56 *Ormosia*  
FABACEAE-PAPIL.



57 *Pseudopiptadenia contorta*  
FABACEAE-MIMOS.



58 *Stryphnodendron polyphyllum*  
FABACEAE-MIMOS.



59 *Swartzia apetala*  
FABACEAE-PAPIL.



60 *Swartzia* sp.  
FABACEAE-PAPIL.



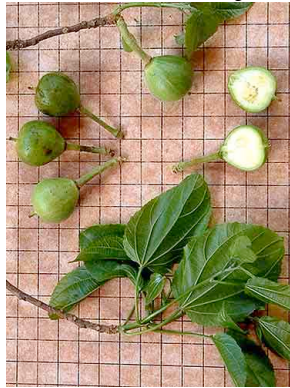
**FRUTOS** de CARATINGA

Jean Philippe Boubli &amp; Fabiana Couto-Santos

Fotos: J. P. Boubli &amp; F. Couto-Santos. Produzido por: R. B. Foster &amp; S. Kaplan. Apoio de Karen Strier, U. Wisconsin; de San Diego Zoo; e Gordon &amp; Betty Moore Foundation.

© Jean Philippe Boubli &amp; Fabiana Couto-Santos. [jpboubli@yahoo.com] CRES Zoological Society of San Diego, CA, USA; &amp; Universidade Federal de Minas Gerais, Brasil.

© Environmental &amp; Conservation Programs, The Field Museum, Chicago, IL 60605 USA. [www.fmn.org/plantguides] [RRC@fmnh.org] Rapid Color Guide # 189 versão 1

61 *Vataireopsis araroba*  
FABACEAE-PAPIL.62 *Banara kuhlmannii*  
FLACOURTIACEAE63 *Carpotroche brasiliensis*  
FLACOURTIACEAE64 *Casearia mariquitensis*  
FLACOURTIACEAE65 *Casearia* sp.  
FLACOURTIACEAE66 *Anthodon decussatum*  
HIPPOCRATEACEAE67 *Cheilochlinium cognatum*  
HIPPOCRATEACEAE68 *Tontelea miersii*  
HIPPOCRATEACEAE69 *Lecythis lurida*  
LECYTHIDACEAE70 *Byrsonima crispa*  
MALPIGHIACEAE71 *Byrsonima stipulacea*  
MALPIGHIACEAE72 *Miconia holosericea*  
MELASTOMATACEAE73 *Miconia prasina*  
MELASTOMATACEAE74 *Cabrlea canjerana*  
MELIACEAE75 *Cedrela fissilis*  
MELIACEAE76 *Cedrela fissilis*  
MELIACEAE77 *Guarea guidonia*  
MELIACEAE78 *Trichilia elegans*  
MELIACEAE79 *Trichilia pallida*  
MELIACEAE80 *Abuta convexa*  
MENISPERMACEAE



Jean Philippe Boubli & Fabiana Couto-Santos

Fotos: J. P. Boubli & F. Couto-Santos. Produzido por: R. B. Foster & S. Kaplan. Apoio de Karen Strier, U. Wisconsin; de San Diego Zoo; e Gordon & Betty Moore Foundation.  
 © Jean Philippe Boubli & Fabiana Couto-Santos. [jpboubli@yahoo.com] CRES Zoological Society of San Diego, CA, USA; & Universidade Federal de Minas Gerais, Brasil.  
 © Environmental & Conservation Programs, The Field Museum, Chicago, IL 60605 USA. [www.fmnh.org/plantguides] [RRC@fmnh.org] Rapid Color Guide # 189 versão 1



81 *Hyperbaena dominguensis*  
MENISPERMACEAE



82 *Siparuna guianensis*  
MONIMIACEAE



83 *Siparuna guianensis*  
MONIMIACEAE



84 *Brosimum guianense*  
MORACEAE



85 *Clarisia ilicifolia*  
MORACEAE



86 *Ficus gomelleira*  
MORACEAE



87 *Ficus trigona*  
MORACEAE



88 *Maclura tinctoria*  
MORACEAE



89 *Naucleopsis oblongifolia*  
MORACEAE



90 *Sorocea guilleminiana*  
MORACEAE



91 *Virola bichuyba*  
MYRISTICACEAE



92 *Virola gardneri*  
MYRISTICACEAE



93 *Calyptanthus clusiifolia*  
MYRTACEAE



94 *Eugenia cerasiflora*  
MYRTACEAE



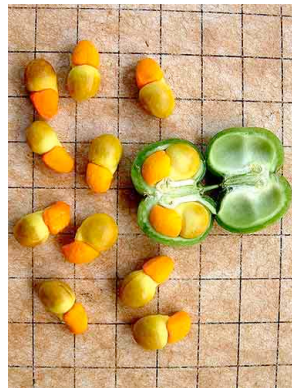
95 *Myrcia crocea*  
MYRTACEAE



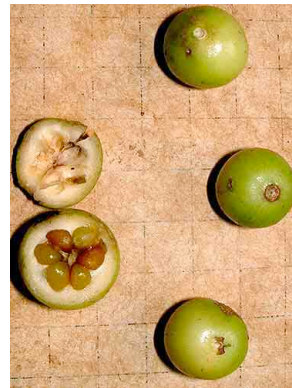
96 *Picramnia* sp. 1  
PICRAMNIACEAE



97 *Picramnia* sp. 2  
PICRAMNIACEAE



98 *Polygala pulcherrima*  
POLYGALACEAE



99 *Alibertia concolor*  
RUBIACEAE



100 *Coussarea graciliflora* cf.  
RUBIACEAE



Jean Philippe Boubli &amp; Fabiana Couto-Santos

Fotos: J. P. Boubli & F. Couto-Santos. Produzido por: R. B. Foster & S. Kaplan. Apoio de Karen Strier, U. Wisconsin; de San Diego Zoo; e Gordon & Betty Moore Foundation.  
 © Jean Philippe Boubli & Fabiana Couto-Santos. [jboubli@yahoo.com] CRES Zoological Society of San Diego, CA, USA; & Universidade Federal de Minas Gerais, Brasil.  
 © Environmental & Conservation Programs, The Field Museum, Chicago, IL 60605 USA. [www.fmh.org/plantguides] [RRC@fmnh.org] Rapid Color Guide # 189 versão 1



101 *Duroia velutina*  
RUBIACEAE



102 *Ferdinandusa speciosa*  
RUBIACEAE



103 *Genipa* sp.  
RUBIACEAE



104 *Psychotria carthagenensis*  
RUBIACEAE



105 *Psychotria florestana*  
RUBIACEAE



106 *Randia armata*  
RUBIACEAE



107 *Galipea jasminiflora*  
RUTACEAE



108 *Neoraputia alba*  
RUTACEAE



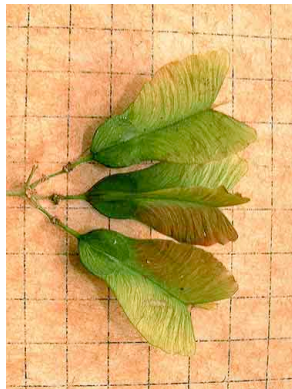
109 *Allophylus semidentatus*  
SAPINDACEAE



110 *Allophylus sericeus*  
SAPINDACEAE



111 *Paullinia carpopodea*  
SAPINDACEAE



112 *Thinouia scandens*  
SAPINDACEAE



113 *Pouteria torta* cf.  
SAPOTACEAE



114 *Symplocos variabilis*  
SYMPLOCACEAE



115 *Trigonía nivea*  
TRIGONIACEAE



116 *Celtis orthacanthos*  
ULMACEAE



117 *Trema micrantha*  
ULMACEAE



118 *Trema micrantha*  
ULMACEAE



119 *Aegiphila sellowiana*  
VERBENACEAE



120 *Anchieta salutaris*  
VIOLACEAE