

Parque Nacional Cordillera Azul, San Martín, PERU

PLANTAS del Puesto 16: CHAMBIRILLO

1

WEB VERSION

Noe Ushinahua P., Bildoso Sangama G., Robin Foster

Fotos de R. B. Foster & T. Wachter. Producido por: R. Foster, S. Kaplan, T. Wachter, con el apoyo del Gordon & Betty Moore Foundation.

© INRENA; y Environmental & Conservation Programs, The Field Museum, Chicago, IL 60605 USA. [RRC@fmnh.org] Rapid Color Guide # 164 version 1.0



1 *Aphelandra aurantiaca*
ACANTHACEAE



2 *Aphelandra*
ACANTHACEAE



3 *Aphelandra*
ACANTHACEAE



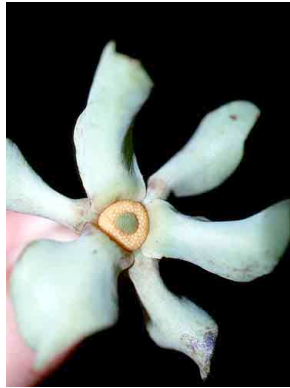
4
ACANTHACEAE



5 *Bomarea*
ALSTROEMERIACEAE



6 *Duguetia*
ANNONACEAE



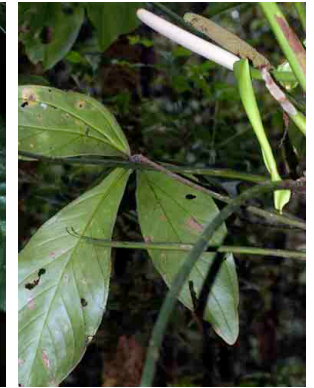
7 *Guatteria*
ANNONACEAE



8 *Guatteria*
ANNONACEAE



APOCYNACEAE



10 *Anthurium*
ARACEAE



11 *Anthurium*
ARACEAE



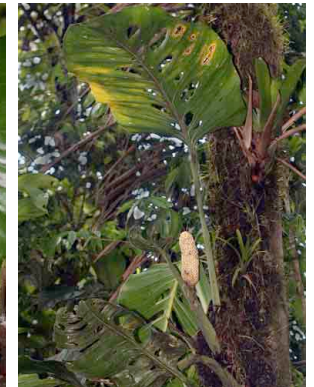
12 *Anthurium*
ARACEAE



13 *Dracontium*
ARACEAE



14 *Homalomena*
ARACEAE



15 *Monstera*
ARACEAE



16 *Philodendron*
ARACEAE



17 *Philodendron*
ARACEAE



18 *Philodendron*
ARACEAE



19 *Philodendron*
ARACEAE



20 *Stenospermation*
ARACEAE

Cordillera Azul National Park, San Martín, PERU
PLANTS of Station 16: CHAMBIRILLO

Noe Ushinahu P., Bildoso Sangama G., Robin Foster

WEB VERSION

Photos by R. B. Foster & T. S. Wachter. Produced by: R. Foster, S. Kaplan, T. Wachter, with support from the Gordon & Betty Moore Foundation © INRENA; & Environmental & Conserv. Programs, The Field Museum, Chicago, IL 60605 USA. [RRC@fmnh.org] Rapid Color Guide # 164 version 1.0



21 *Xanthosoma*
ARACEAE



22 *Schefflera*
ARALIACEAE



23 *Schefflera*
ARALIACEAE



24 *Desmoncus polyacanthos*
ARECACEAE



25 *Geonoma*
ARECACEAE



26 *Geonoma*
ARECACEAE



27 *Wettinia maynensis*
ARECACEAE



28 *Mikania*
ASTERACEAE



29
ASTERACEAE



30
ASTERACEAE



31 *Pachira*
BOMBACACEAE



32 *Cordia nodosa*
BORAGINACEAE



33 *Cordia nodosa*
BORAGINACEAE



34 *Aechmea*
BROMELIACEAE



35 *Guzmania*
BROMELIACEAE



36 *Guzmania*
BROMELIACEAE



37 *Guzmania*
BROMELIACEAE



38 *Guzmania*
BROMELIACEAE



39 *Guzmania*
BROMELIACEAE



40 *Racinea*
BROMELIACEAE

Parque Nacional Cordillera Azul, San Martín, PERU

PLANTAS del Puesto 16: CHAMBIRILLO

3

WEB VERSION

Noe Ushinahu P., Bildoso Sangama G., Robin Foster

Fotos de R. B. Foster & T. Wachter. Producido por: R. Foster, S. Kaplan, T. Wachter, con el apoyo del Gordon & Betty Moore Foundation.

© INRENA; y Environmental & Conservation Programs, The Field Museum, Chicago, IL 60605 USA. [RRC@fmnh.org] Rapid Color Guide # 164 version 1.0



41 Racinea
BROMELIACEAE



42 Brunellia
BRUNELLIACEAE



43 Protium
BURSERACEAE



44 Trattinnickia
BURSERACEAE



45 Rhipsalis
CACTACEAE



46 Rhipsalis
CACTACEAE



47 Centropogon granulatus
CAMPANULACEAE



48 Siphocampylos
CAMPANULACEAE



49 Capparis
CAPPARIDACEAE



50 Caryocar glabrum
CARYOCARACEAE



51 Caryocar glabrum
CARYOCARACEAE



52 Caryocar glabrum
CARYOCARACEAE



53 Cecropia
CECROPIACEAE



54 Cecropia
CECROPIACEAE



55 Cecropia
CECROPIACEAE



56 Coussapoa
CECROPIACEAE



57 Pourouma
CECROPIACEAE



58 Pourouma
CECROPIACEAE



59 Chenopodium
CHENOPODIACEAE



60 Clusia
CLUSIACEAE

Cordillera Azul National Park, San Martín, PERU

PLANTS of Station 16: CHAMBIRILLO

Noe Ushinahua P., Bildoso Sangama G., Robin Foster

WEB VERSION

Photos by R. B. Foster & T. S. Wachter. Produced by: R. Foster, S. Kaplan, T. Wachter, with support from the Gordon & Betty Moore Foundation
© INRENA; & Environmental & Conserv. Programs, The Field Museum, Chicago, IL 60605 USA. [RRC@fmnh.org] Rapid Color Guide # 164 version 1.0



61 *Dystovomita*
CLUSIACEAE



62 *Marila*
CLUSIACEAE



63 *Symphonia globulifera*
CLUSIACEAE



64 *Symphonia globulifera*
CLUSIACEAE



65 *Tovomita weddelliana*
CLUSIACEAE



66 *Tovomita weddelliana*
CLUSIACEAE



67 *Vismia*
CLUSIACEAE



68 *Dichorisandra*
COMMELINACEAE



69 *Costus*
COSTACEAE



70 *Gurania*
CUCURBITACEAE



71 *Gurania*
CUCURBITACEAE



72 *Asplundia*
CYCLANTHACEAE



73 *Cyclanthus bipartitus*
CYCLANTHACEAE



74 *Sphaeradenia*
CYCLANTHACEAE



75
CYCLANTHACEAE



76
CYPERACEAE



77 *Dioscorea*
DIOSCOREACEAE



78 *Dioscorea*
DIOSCOREACEAE



79 *Sloanea*
ELAEOCARPACEAE



80 *Sphrysospermum*
ERICACEAE

Parque Nacional Cordillera Azul, San Martín, PERU

PLANTAS del Puesto 16: CHAMBIRILLO

5

WEB VERSION

Noe Ushinahua P., Bildoso Sangama G., Robin Foster

Fotos de R. B. Foster & T. Wachter. Producido por: R. Foster, S. Kaplan, T. Wachter, con el apoyo del Gordon & Betty Moore Foundation.

© INRENA; y Environmental & Conservation Programs, The Field Museum, Chicago, IL 60605 USA. [RRC@fmmh.org] Rapid Color Guide # 164 version 1.0



81 Satyria
ERICACEAE



82 Erythroxylum
ERYTHROXYLACEAE



83 Erythroxylum
ERYTHROXYLACEAE



84 Acalypha
EUPHORBIACEAE



85 Aparisthium cordatum
EUPHORBIACEAE



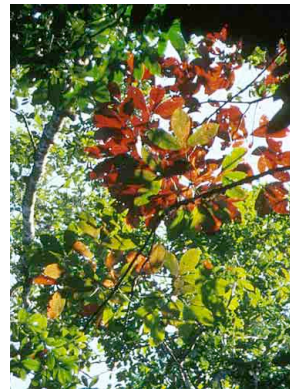
86 Croton
EUPHORBIACEAE



87 Croton
EUPHORBIACEAE



88 Croton
EUPHORBIACEAE



89 Hevea guianensis
EUPHORBIACEAE



90 Hevea guianensis
EUPHORBIACEAE



91 Mabea
EUPHORBIACEAE



92 Tachigali vasquezii
FABACEAE-CAESALPINOID



93 Abarema
FABACEAE-MIMOSOID



94 Calliandra
FABACEAE-MIMOSOID



95 Inga
FABACEAE-MIMOSOID



96 Inga
FABACEAE-MIMOSOID



97 Inga
FABACEAE-MIMOSOID



98
FABACEAE-MIMOSOID



99 Desmodium
FABACEAE-PAPILIONOID



100 Swartzia
FABACEAE-PAPILIONOID

Cordillera Azul National Park, San Martín, PERU

PLANTS of Station 16: CHAMBIRILLO

Noe Ushinuhua P., Bildoso Sangama G., Robin Foster

WEB VERSION

Photos by R. B. Foster & T. S. Wachter. Produced by: R. Foster, S. Kaplan, T. Wachter, with support from the Gordon & Betty Moore Foundation
© INRENA; & Environmental & Conserv. Programs, The Field Museum, Chicago, IL 60605 USA. [RRC@fmmh.org] Rapid Color Guide # 164 version 1.0



101 *Potalia resinifera*
GENTIANACEAE



102 *Symbolanthus?*
GENTIANACEAE



103 *Besleria*
GESNERIACEAE



104 *Columnea*
GESNERIACEAE



105 *Columnea*
GESNERIACEAE



106 *Drymonia*
GESNERIACEAE



107 *Drymonia*
GESNERIACEAE



108 *Heliconia hirsuta*
HELICONIACEAE



109
HIPPOCRATEACEAE



110
HIPPOCRATEACEAE



111 *Calatola costaricensis*
ICACINACEAE



112 *Calatola costaricensis*
ICACINACEAE



113 *Discophora guianensis*
ICACINACEAE



114 *Metteniusa*
ICACINACEAE



115
LAURACEAE



116
LAURACEAE



117 *Strychnos tarapotensis*
LOGANIACEAE



118 *Strychnos*
LOGANIACEAE



119 *Calathea*
MARANTACEAE



120 *Ischnosiphon*
MARANTACEAE

Parque Nacional Cordillera Azul, San Martín, PERU

PLANTAS del Puesto 16: CHAMBIRILLO

7

WEB VERSION

Noe Ushinahua P., Bildoso Sangama G., Robin Foster

Fotos de R. B. Foster & T. Wachter. Producido por: R. Foster, S. Kaplan, T. Wachter, con el apoyo del Gordon & Betty Moore Foundation.

© INRENA; y Environmental & Conservation Programs, The Field Museum, Chicago, IL 60605 USA. [RRC@fmmh.org] Rapid Color Guide # 164 version 1.0



121 Monotagma
MARANTACEAE



122 Monotagma
MARANTACEAE



123
MARANTACEAE



124 Marcgravia
MARCGRAVIACEAE



125 Adelobotrys
MELASTOMATACEAE



126 Clidemia
MELASTOMATACEAE



127 Clidemia
MELASTOMATACEAE



128 Graffenrieda
MELASTOMATACEAE



129 Graffenrieda
MELASTOMATACEAE



130 Miconia
MELASTOMATACEAE



131 Miconia
MELASTOMATACEAE



132 Miconia
MELASTOMATACEAE



133 Miconia
MELASTOMATACEAE



134 Miconia
MELASTOMATACEAE



135 Miconia
MELASTOMATACEAE



136 Miconia
MELASTOMATACEAE



137 Miconia
MELASTOMATACEAE



138 Miconia
MELASTOMATACEAE



139 Salpinga
MELASTOMATACEAE



140 Salpinga
MELASTOMATACEAE

Cordillera Azul National Park, San Martín, PERU

PLANTS of Station 16: CHAMBIRILLO

Noe Ushinuhua P., Bildoso Sangama G., Robin Foster

WEB VERSION

Photos by R. B. Foster & T. S. Wachter. Produced by: R. Foster, S. Kaplan, T. Wachter, with support from the Gordon & Betty Moore Foundation
© INRENA; & Environmental & Conserv. Programs, The Field Museum, Chicago, IL 60605 USA. [RRC@fmmh.org] Rapid Color Guide # 164 version 1.0



141 *Tibouchina*
MELASTOMATACEAE



142 *Tococa*
MELASTOMATACEAE



143
MELASTOMATACEAE



144
MELASTOMATACEAE



145 *Cabralea cangerana*
MELIACEAE



146 *Guarea*
MELIACEAE



147 *Guarea*
MELIACEAE



148 *Trichilia*
MELIACEAE



149 *Mouriri*
MEMECYLACEAE



150
MENISPERMACEAE



151
MENISPERMACEAE



152 *Mollinedia*
MONIMIACEAE



153 *Mollinedia*
MONIMIACEAE



154 *Mollinedia*
MONIMIACEAE



155 *Brosimum*
MORACEAE



156 *Ficus*
MORACEAE



157 *Ficus*
MORACEAE



158 *Perebea guianensis*
MORACEAE



159 *Otoba glycyarpa*
MYRISTICACEAE



160 *Virola*
MYRISTICACEAE

Parque Nacional Cordillera Azul, San Martín, PERU

PLANTAS del Puesto 16: CHAMBIRILLO

9

WEB VERSION

Noe Ushinahua P., Bildoso Sangama G., Robin Foster

Fotos de R. B. Foster & T. Wachter. Producido por: R. Foster, S. Kaplan, T. Wachter, con el apoyo del Gordon & Betty Moore Foundation.

© INRENA; y Environmental & Conservation Programs, The Field Museum, Chicago, IL 60605 USA. [RRC@fmnh.org] Rapid Color Guide # 164 version 1.0



161 *Virola*
MYRISTICACEAE



162 *Virola*
MYRISTICACEAE



163 *Cybianthus*
MYRSINACEAE



164 *Cybianthus*
MYRSINACEAE



165 *Cybianthus*
MYRSINACEAE



166 *Cybianthus*
MYRSINACEAE



167 *Cybianthus*
MYRSINACEAE



168 *Eugenia*
MYRTACEAE



169 *Myrcia*
MYRTACEAE



170
MYRTACEAE



171 *Neea*
NYCTAGINACEAE



172 *Neea*
NYCTAGINACEAE



173 *Neea*
NYCTAGINACEAE



174 *Neea*
NYCTAGINACEAE



175 *Ouratea*
OCHNACEAE



176 *Dulacia candida*
OLACACEAE



177 *Heisteria*
OLACACEAE



178 *Epidendrum*
ORCHIDACEAE



179 *Epidendrum*
ORCHIDACEAE



180 *Gongora*
ORCHIDACEAE

Cordillera Azul National Park, San Martín, PERU PLANTS of Station 16: CHAMBIRILLO

Noe Ushinahua P., Bildoso Sangama G., Robin Foster

WEB VERSION

Photos by R. B. Foster & T. S. Wachter. Produced by: R. Foster, S. Kaplan, T. Wachter, with support from the Gordon & Betty Moore Foundation © INRENA; & Environmental & Conserv. Programs, The Field Museum, Chicago, IL 60605 USA. [RRC@fmnh.org] Rapid Color Guide # 164 version 1.0



181 Masdevallia
ORCHIDACEAE



182 Maxillaria
ORCHIDACEAE



183 Maxillaria
ORCHIDACEAE



184 Maxillaria
ORCHIDACEAE



185 Pleurothallis
ORCHIDACEAE



186 Pleurothallis
ORCHIDACEAE



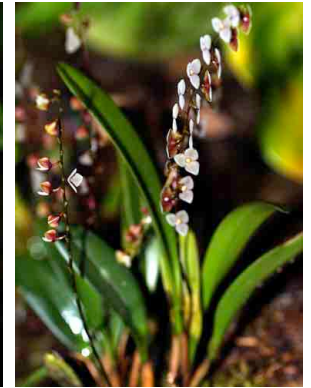
187 Pleurothallis
ORCHIDACEAE



188 Pleurothallis
ORCHIDACEAE



189 Pleurothallis
ORCHIDACEAE



190 Stelis
ORCHIDACEAE



191
ORCHIDACEAE



192 Peperomia
PIPERACEAE



193 Peperomia
PIPERACEAE



194 Peperomia
PIPERACEAE



195 Peperomia
PIPERACEAE



196 Peperomia
PIPERACEAE



197 Peperomia
PIPERACEAE



198 Peperomia
PIPERACEAE



199 Piper
PIPERACEAE



200 Piper
PIPERACEAE

Parque Nacional Cordillera Azul, San Martín, PERU

PLANTAS del Puesto 16: CHAMBIRILLO

11

WEB VERSION

Noe Ushinahua P., Bildoso Sangama G., Robin Foster

Fotos de R. B. Foster & T. Wachter. Producido por: R. Foster, S. Kaplan, T. Wachter, con el apoyo del Gordon & Betty Moore Foundation.

© INRENA; y Environmental & Conservation Programs, The Field Museum, Chicago, IL 60605 USA. [RRC@fmnh.org] Rapid Color Guide # 164 version 1.0



201 Piper
PIPERACEAE



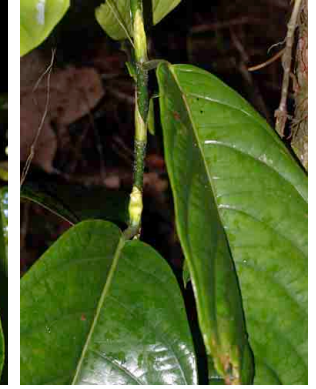
202 Piper
PIPERACEAE



203
POACEAE



204 Bredemeyera
POLYGALACEAE



205 Coccoloba
POLYGONACEAE



206 Bathysa
RUBIACEAE



207 Bathysa
RUBIACEAE



208 Borojoa
RUBIACEAE



209 Coussarea
RUBIACEAE



210 Coussarea
RUBIACEAE



211 Coussarea
RUBIACEAE



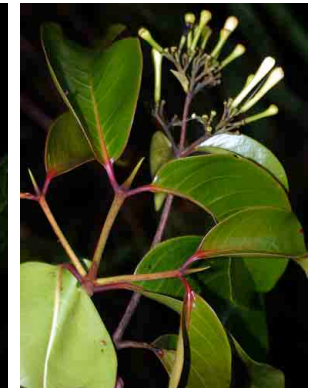
212 Faramaea anisocalyx
RUBIACEAE



213 Faramaea
RUBIACEAE



214 Faramaea
RUBIACEAE



215 Ferdinandusa
RUBIACEAE



216 Hillia
RUBIACEAE



217 Hillia
RUBIACEAE



218 Hippotis
RUBIACEAE



219 Hoffmannia
RUBIACEAE



220 Hoffmannia
RUBIACEAE

Cordillera Azul National Park, San Martín, PERU PLANTS of Station 16: CHAMBIRILLO

Noe Ushinahu P., Bildoso Sangama G., Robin Foster

WEB VERSION

Photos by R. B. Foster & T. S. Wachter. Produced by: R. Foster, S. Kaplan, T. Wachter, with support from the Gordon & Betty Moore Foundation
© INRENA; & Environmental & Conserv. Programs, The Field Museum, Chicago, IL 60605 USA. [RRC@fmnh.org] Rapid Color Guide # 164 version 1.0



221 *Ladenbergia*
RUBIACEAE



222 *Ladenbergia*
RUBIACEAE



223 *Notopleura*
RUBIACEAE



224 *Notopleura*
RUBIACEAE



225 *Notopleura*
RUBIACEAE



226 *Palicourea luteonivea*
RUBIACEAE



227 *Palicourea luteonivea*
RUBIACEAE



228 *Palicourea punicea*
RUBIACEAE



229 *Palicourea*
RUBIACEAE



230 *Psychotria*
RUBIACEAE



231 *Psychotria*
RUBIACEAE



232 *Psychotria*
RUBIACEAE



233 *Psychotria*
RUBIACEAE



234 *Psychotria*
RUBIACEAE



235 *Psychotria*
RUBIACEAE



236 *Psychotria*
RUBIACEAE



237 *Psychotria*
RUBIACEAE



238 *Psychotria*
RUBIACEAE



239 *Rudgea*
RUBIACEAE



240 *Rudgea*
RUBIACEAE

Parque Nacional Cordillera Azul, San Martín, PERU

PLANTAS del Puesto 16: CHAMBIRILLO

13

WEB VERSION

Noe Ushinahua P., Bildoso Sangama G., Robin Foster

Fotos de R. B. Foster & T. Wachter. Producido por: R. Foster, S. Kaplan, T. Wachter, con el apoyo del Gordon & Betty Moore Foundation.

© INRENA; y Environmental & Conservation Programs, The Field Museum, Chicago, IL 60605 USA. [RRC@fmnh.org] Rapid Color Guide # 164 version 1.0



241
RUBIACEAE



242 Paullinia
SAPINDACEAE



243 Micropholis
SAPOTACEAE



244 Pouteria
SAPOTACEAE



245 Pouteria
SAPOTACEAE



246
SAPOTACEAE



247 Simarouba amara
SIMAROUBACEAE



248 Markea
SOLANACEAE



249 Solanum
SOLANACEAE



250 Solanum
SOLANACEAE



251 Theobroma subincana
STERCULIACEAE



252 Theobroma subincana
STERCULIACEAE



253 Aegiphila
VERBENACEAE



254 Aegiphila
VERBENACEAE



255 Aegiphila
VERBENACEAE



256 Vochysia
VOCHYSIACEAE



257 ?



158 ?



259 ?



260 Asplenium
PTERIDOPHYTA

Cordillera Azul National Park, San Martín, PERU PLANTS of Station 16: CHAMBIRILLO

Noe Ushinahua P., Bildoso Sangama G., Robin Foster

WEB VERSION

Photos by R. B. Foster & T. S. Wachter. Produced by: R. Foster, S. Kaplan, T. Wachter, with support from the Gordon & Betty Moore Foundation © INRENA; & Environmental & Conserv. Programs, The Field Museum, Chicago, IL 60605 USA. [RRC@fmnh.org] Rapid Color Guide # 164 version 1.0



261 *Cyathea*
PTERIDOPHYTA



262 *Cyathea*
PTERIDOPHYTA



263 *Elaphoglossum*
PTERIDOPHYTA



264 *Huperzia*
PTERIDOPHYTA



265 *Huperzia*
PTERIDOPHYTA



266 *Lomariopsis*
PTERIDOPHYTA



267 *Microgramma*
PTERIDOPHYTA



268 *Oleandra*
PTERIDOPHYTA



269 *Polybotrya*
PTERIDOPHYTA



270 *Pteris*
PTERIDOPHYTA



271 *Sticherus*
PTERIDOPHYTA



272 *Sticherus*
PTERIDOPHYTA



273 *Sticherus*
PTERIDOPHYTA



274 *Sticherus*
PTERIDOPHYTA



275 *Trichomanes*
PTERIDOPHYTA



276 *Trichomanes*
PTERIDOPHYTA



277 *Vittaria*
PTERIDOPHYTA



278
PTERIDOPHYTA



279
PTERIDOPHYTA



280 *Sticta* cf.
LICHEN