

Pando, BOLIVIA PALMAS de Federico Román

Robin Foster, Janira Urrelo Z., Bil Alverson, Julio Rojas G., Daniel Ayaviri F.

Fotos de R. B. Foster & T. Wachter. Producido por: R. B. Foster, M. Giblin, T. Wachter, con el apoyo del Andrew Mellon Foundation.

© Environmental & Conservation Programs, The Field Museum, Chicago, IL 60605 USA. [RRC@fmnh.org] Rapid Color Guide # 146 version 1.0



1 *Astrocaryum acaule*



2 *Astrocaryum aculeatum*



3 *Astrocaryum gynacanthum*



4 *Astrocaryum gynacanthum*



5 *Astrocaryum murumuru*



6 *Attalea maripa*



7 *Attalea phalerata*



8 *Attalea speciosa*



9 *Attalea speciosa*



10 *Bactris acanthocarpa*



11 *Bactris brongniartii*



12 *Bactris concinna*



13 *Bactris glaucescens*



14 *Bactris hirta* cf.



15 *Bactris major* cf.



16 *Bactris maraja*



17 *Bactris simplicifrons*



18 *Bactris trailiana*



19 *Bactris*



20 *Bactris* sp. nov.?

Pando, BOLIVIA PALMS of Federico Román

Robin Foster, Janira Urrelo Z., Bil Alverson, Julio Rojas G., Daniel Ayaviri F.

Photos by R. B. Foster & T. Wachter. Produced by: R. B. Foster, M. Giblin, T. Wachter, with support of the Andrew Mellon Foundation.

© Environmental & Conservation Programs, The Field Museum, Chicago, IL 60605 USA. [RRC@fmnh.org] Rapid Color Guide # 146 version 1.0



21 *Chamaedorea angustisecta*



22 *Chelyocarpus chuco*



23 *Chelyocarpus chuco*



24 *Desmoncus mitis*



25 *Desmoncus orthacanthos*



26 *Euterpe precatoria*



27 *Geonoma deversa*



28 *Geonoma macrostachys*



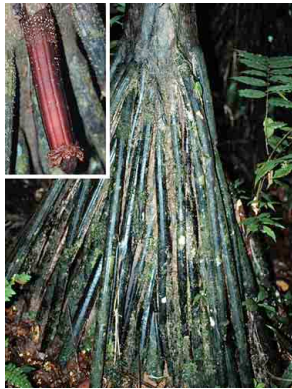
29 *Geonoma*



30 *Geonoma*



31 *Iriartea deltoidea*



32 *Iriartea deltoidea*



33 *Mauritia flexuosa*



34 *Mauritiella armata*



35 *Mauritiella armata*



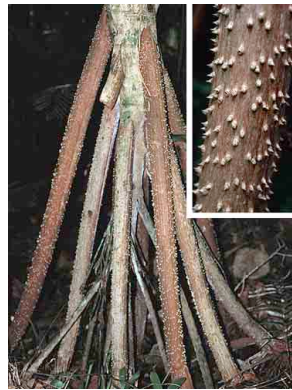
36 *Oenocarpus bataua*



37 *Oenocarpus mapora*



38 *Socratea exorrhiza*



39 *Socratea exorrhiza*



40 *Syagrus sancona*