

Midwest Region, USA

Beginner's Guide to Moths of the Midwest - Owlets

Angella Moorehouse & Illinois Nature Preserve Commission

Photos: Angella Moorehouse (angella.moorehouse@illinois.gov). Produced by: Angella Moorehouse with the assistance of Alicia Diaz, Field Museum.

Identification assistance provided by: multiple sources (inaturalist.org; bugguide.net)

© Field Museum (2021) CC BY-NC 4.0. Licensed works are free to use/share/remix with attribution, but commercial use of the original work is not permitted.

[fieldguides.fieldmuseum.org]

[1328] version 1 7/2021

About the BEGINNER'S MOTHS OF THE MIDWEST GUIDES

Most photos were taken in west-central and central Illinois; a few are from eastern Iowa and north-central Wisconsin. Nearly all were posted to identification websites: BugGuide.net and iNaturalist.org. Identification help was provided by Aaron Hunt, Steve Nanz, John and Jane Balaban, Chris Grinter, Frank Hitchell, Jason Dombroskie, William H. Taft, Jim Wiker, and Terry Harrison as well as others contributing to the websites. Attempts were made to obtain expert verifications for all photos to the field identification level, however, there will be errors. Please contact the author with all corrections. Additional assistance was provided by longtime Lepidoptera survey partner, Susan Hargrove.

The intention of these guides is to provide the means to compare photographs of living specimens of related moths from the Midwest to aid the citizen scientists with identification in the field for Bio Blitz, Moth-ers Day, and other night lighting events. A taxonomic list to all the species featured is provided at the end along with some field identification tips.

WEBSITES PROVIDING IDENTIFICATION INFORMATION

BugGuide.net

iNaturalist.org

Mothphotographersgroup.msstate.edu

Insectsofiowa.org

centralillinoisinsects.org/weblog/resources/

WHICH MOTH GUIDE TO USE

The moths were split into 6 groups for the purposes of creating smaller guides focusing on similar features of 1 or more superfamilies. The guides are split up thusly:

- 1) **Macromoths** – large showy moths generally ranging in size of 5-18cm; Superfamilies: Bombycoidea (royal, silkmoths, and sphinx moths), Cossoides (carpenterworm), Lasiocampoidea (lappet moths)



Antheraea polyphemus
Polyphemus moth



Prionoxystus robiniae
Carpenterworm moth



Darapsa myron
Virginia Creeper Sphinx

- 2) **Micromoths** – tiny moths with wingspans generally <2cm the exception being the clearwing borers (*Sesioidae*) which average between 1-3cm; Other Superfamilies: *Adeloidea* (fairy moths), *Choreutidae* (metalmarks), *Epermenioides* (fringe-tufted moths), *Gelechioidea* (curve-horned moths – has greatest number of species), *Gracillarioidea* (tube moths), *Micropterigoidea* (mandibulate archaic moths), *Schreckensteinioidae* (bristle-legged moths), *Tineoidea* (clothes, carpenter, and bagworm moths), *Yponomatoidea* (ermine moths)



Dichomeris inversella
Inverse Dichomeris



Caloptilia blandella
Walnut Caloptilia



Synanthedon acerni
Maple Callus Borer



Atteva aurea
Alianthus webworm


Midwest Region, USA

Beginner's Guide to Moths of the Midwest - Owlets

2

Angella Moorehouse & Illinois Nature Preserve Commission

Photos: Angella Moorehouse (angella.moorehouse@illinois.gov). Produced by: Angella Moorehouse with the assistance of Alicia Diaz, Field Museum. Identification assistance provided by: multiple sources (inaturalist.org; bugguide.net)

 © Field Museum (2021) CC BY-NC 4.0. Licensed works are free to use/share/remix with attribution, but commercial use of the original work is not permitted.

[fieldguides.fieldmuseum.org] [1328] version 1 7/2021

WHICH MOTH GUIDE TO USE (Cont.)

- 3) **Geometer Moths (Geometroidea)** – medium sized with wingspan 3-5 cm, most have angular sharp-pointed wings held open like butterflies; most larvae are “inchworms”



Macaria multilineata
Many-lined Angle



Pleuroprucha insulsaria
Tan Wave



Haematopsis grataria
Chickweed Geometer

- 4) **Noctuids/Owlets (Noctuoidea)** – most species of any moth superfamily, medium sized with wingspan generally 2-5cm, triangular shape with stout bodies; most are nocturnal but includes some daytime pollinators: lichen, tiger, fungus, underwing, forage looper, litter, bird-dropping, dagger, wood nymph, groundling, dark owlet, earworm, flower, borer, cutworm, dart, quaker, wainscot, sawfly, looper, and prominent moths



Catocala nuptialis
Married Underwing



Acrionicta vinnula
Delightful Dagger



Hypena abalienalis
White-lined Hypena

- 5) **Pyralids and Crambid Moths (Pyraloidea)** snout moths – large group of small moths with wingspan of 1- 4 cm, head bears long upturned labial palpi or snout; Guide also includes the Superfamilies: **Drepanoidea** (hooktip moths), **Pterophoroidea** (plume moths), **Thryidoidea** (thyris moths)



Herptogramma aeglaelis
Serpentine Webworm



Chrysoteuchia topiaria
Cranberry Girdler

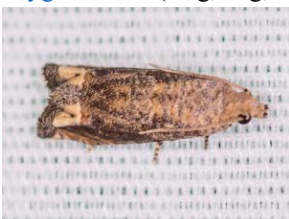


Geina sp.
Plume Moth



Dysodia ocellatana
Eyed Dysodia

- 6) **Tortricid Moths (Tortricidae)** – tortrix and leafroller moths – large group of small moths (often grouped with micromoths) with wingspan 1-3 cm. Most are drab with mottled and marbled brown coloration. Some (Olethreutinae) have larvae which bore into plant stems, roots, buds, or seeds; Tortricinae larvae construct leaf rolls; Guide also includes the Superfamily: **Zygaenoidea** (slug, hag, skiff, skeletonizer moths)



Epiblema abruptana
Abrupt Epiblema



Choristoneura roseaceana
Oblique-banded Leafroller



Apoda y-inversum
Yellow-collared Slug Moth

Midwest Region, USA

Beginner's Guide to Moths of the Midwest - Owlets

Angella Moorehouse & Illinois Nature Preserve Commission

Photos: Angella Moorehouse (angella.moorehouse@illinois.gov). Produced by: Angella Moorehouse with the assistance of Alicia Diaz, Field Museum. Identification assistance provided by: multiple sources (inaturalist.org; bugguide.net)

© Field Museum (2021) CC BY-NC 4.0. Licensed works are free to use/share/remix with attribution, but commercial use of the original work is not permitted.

[fieldguides.fieldmuseum.org]

[1328] version 1 7/2021



1 *Cisthene plumbea*
EREVIDAE
Lead-colored Lichen Moth



2 *Hypoprepia fucosa*
EREVIDAE
Painted Lichen Moth



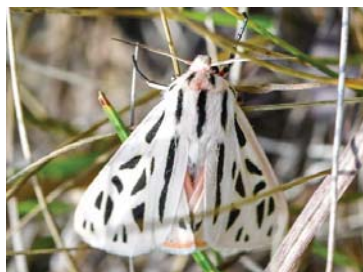
3 *Hypoprepia miniata*
EREVIDAE
Scarlet-winged Lichen Moth



4 *Lycomorpha pholus*
EREVIDAE
Black and Yellow Lichen Moth



5 *Crambidia pallida*
EREVIDAE
Pale Lichen Moth



6 *Apantesis arge*
EREVIDAE
Arge Tiger Moth



7 *Apantesis phalerata*
EREVIDAE
Harnessed Tiger Moth



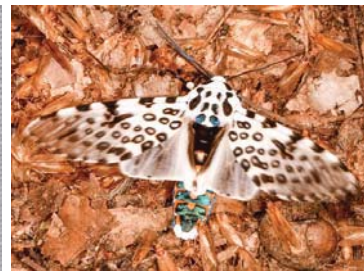
8 *Apantesis virgo*
EREVIDAE
Virgin Tiger Moth



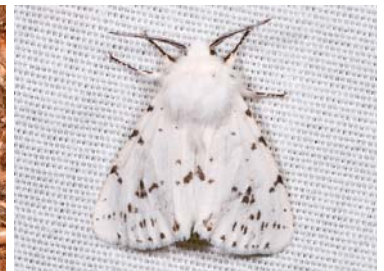
9 *Virbia* sp.
EREVIDAE
Orange Virbia Moth



10 *Estigmene acrea*
EREVIDAE
Salt Marsh Moth



11 *Hypercompe scribonia*
EREVIDAE
Giant Leopard Moth



12 *Hyphantria cunea*
EREVIDAE
Fall Webworm



13 *Pyrrharctia isabella*
EREVIDAE
Isabella Tiger Moth



14 *Spilosoma congrua*
EREVIDAE
Agreeable Tiger Moth



15 *Haploa lecontei*
EREVIDAE
Leconte's Haploa



16 *Haploa reversa*
EREVIDAE
Reversed Haploa



17 *Haploa* sp. (pale form)
EREVIDAE
Haploa Moth



18 *Ciseps fulvicollis*
EREVIDAE
Yellow-collared Scape Moth



19 *Ctenucha virginica*
EREVIDAE
Virginia Ctenucha



20 *Cynia tenera*
EREVIDAE
Delicate Cynia

Midwest Region, USA

Beginner's Guide to Moths of the Midwest - Owlets

Angella Moorehouse & Illinois Nature Preserve Commission

Photos: Angella Moorehouse (angella.moorehouse@illinois.gov). Produced by: Angella Moorehouse with the assistance of Alicia Diaz, Field Museum. Identification assistance provided by: multiple sources (inaturalist.org; bugguide.net)

© Field Museum (2021) CC BY-NC 4.0. Licensed works are free to use/share/remix with attribution, but commercial use of the original work is not permitted.

[fieldguides.fieldmuseum.org] [1328] version 1 7/2021



21 *Halysidota tessellaris/harrisii*
EREVIDAE
Banded Tussock Moth



22 *Metalectra discalis*
EREVIDAE
Common Fungus Moth



23 *Hyperstrotia nana*
EREVIDAE
White-lined Graylet Moth



24 *Isogona tenuis*
EREVIDAE
Thin-lined Owllet



25 *Spargalmoa sexpunctata*
EREVIDAE
Six-spotted Gray Moth



26 *Catocala amatrix*
EREVIDAE
Sweetheart Underwing



27 *Catocala grynea*
EREVIDAE
Woody Underwing



28 *Catocala ilia*
EREVIDAE
Iliia Underwing



29 *Catocala cf. illecta*
EREVIDAE
Magdalen Underwing



30 *Catocala innubens*
EREVIDAE
The Betrothed



31 *Catocala cf. insolabilis*
EREVIDAE
Inconsolable Underwing



32 *Catocala neogama*
EREVIDAE
Bride Underwing



33 *Catocala nuptialis*
EREVIDAE
Married Underwing



34 *Catocala palaeogama*
EREVIDAE
Old Wife Underwing



35 *Catocala resecta*
EREVIDAE
Yellow Gray Underwing



36 *Catocala ultronia*
EREVIDAE
Ultronia Underwing



37 *Spiloloma lunilinea*
EREVIDAE
Moon-lined Moth



38 *Caenurgina crassiuscula*
EREVIDAE
Clover Looper



39 *Caenurgina erechtea*
EREVIDAE
Forage Looper



40 *Celiptera frustulum*
EREVIDAE
Black Bit Moth

Midwest Region, USA

Beginner's Guide to Moths of the Midwest - Owlets

Angella Moorehouse & Illinois Nature Preserve Commission

Photos: Angella Moorehouse (angella.moorehouse@illinois.gov). Produced by: Angella Moorehouse with the assistance of Alicia Diaz, Field Museum. Identification assistance provided by: multiple sources (inaturalist.org; bugguide.net)

© Field Museum (2021) CC BY-NC 4.0. Licensed works are free to use/share/remix with attribution, but commercial use of the original work is not permitted.

[fieldguides.fieldmuseum.org]

[1328] version 1 7/2021



41 *Mocis texana*
EREVIDAE
Texas Mocis Moth



42 *Lesmone detrahens*
EREVIDAE
Detracted Owlet



43 *Parallela bistraris*
EREVIDAE
Maple Looper Moth



44 *Zale galbanata*
EREVIDAE
Maple Zale



45 *Zale lunata*
EREVIDAE
Lunate Zale



46 *Ascalapha odorata*
EREVIDAE
Black Witch



47 *Panopoda carneicosta*
EREVIDAE
Brown Panopoda



48 *Panopoda rufimargo*
EREVIDAE
Red-lined Panopoda



49 *Bleptina caradrinalis*
EREVIDAE
Bent-winged Owlet



50 *Chytolita morbidalis*
EREVIDAE
Morbid Owlet



51 *Idia aemula*
EREVIDAE
Common Idia



52 *Idia americanis*
EREVIDAE
American Idia



53 *Idia cf. diminuendos*
EREVIDAE
Orange-spotted Idia



54 *Idia cf. forbesii*
EREVIDAE
Forbes's Moth



55 *Idia cf. rotundalis*
EREVIDAE
Rotund Idia Moth



56 *Lascoria ambigualis*
EREVIDAE
Ambiguous Moth



57 *Macrochilo hypocritalis*
EREVIDAE
Two-dotted Macrochilo



58 *Macrochilo litophora*
EREVIDAE
Brown-lined Owlet



59 *Palthis angualis*
EREVIDAE
Dark-spotted Palthis



60 *Palthis asopialis*
EREVIDAE
Faint-spotted Palthis

Midwest Region, USA

Beginner's Guide to Moths of the Midwest - Owlets

Angella Moorehouse & Illinois Nature Preserve Commission

Photos: Angella Moorehouse (angella.moorehouse@illinois.gov). Produced by: Angella Moorehouse with the assistance of Alicia Diaz, Field Museum.

Identification assistance provided by: multiple sources (inaturalist.org; bugguide.net)

© Field Museum (2021) CC BY-NC 4.0. Licensed works are free to use/share/remix with attribution, but commercial use of the original work is not permitted.

[fieldguides.fieldmuseum.org] [1328] version 1 7/2021



61 *Phalaenophana pyramusalis*
EREVIDAE
Dark-banded Owlet



62 *Phalaenostola larentioides*
EREVIDAE
Black-banded Phalaenostola



63 *Phalaenostola metonalis*
EREVIDAE
Pale Phalaenostola



64 *Renia adspersigillus*
EREVIDAE
Speckled Renia



65 *Renia salusalis*
EREVIDAE
Dotted Renia



66 *Tetanolita floridana*
EREVIDAE
Florida Tetanolita



67 *Zanclognatha cf. cruralis*
EREVIDAE
Early Fan Foot



68 *Zanclognatha cf. jacchusalis*
EREVIDAE
Fan Foot Moth



69 *Zanclognatha pedipilalis*
EREVIDAE
Grayish Fan Foot



70 *Hypena abalienalis*
EREVIDAE
White-lined Hypena



71 *Hypena bijugalis*
EREVIDAE
Dimorphic Hypena



72 *Hypena deceptalis*
EREVIDAE
Deceptive Hypena



73 *Hypena humuli*
EREVIDAE
Hop Vine Hypena



74 *Hypena madefactalis*
EREVIDAE
Gray-edged Hypena



75 *Hypena manalis*
EREVIDAE
Flowing Line Hypena



76 *Hypena scabra*
EREVIDAE
Green Cloverworm Moth



77 *Orgyia leucostigma*
EREVIDAE
White-marked Tussock Moth



78 *Melanomma auricinctaria*
EREVIDAE
Gold-lined Melanomma



79 *Ledaea perditalis*
EREVIDAE
Lost Owlet



80 *Rivula propinquialis*
EREVIDAE
Spotted Grass Moth

Midwest Region, USA

Beginner's Guide to Moths of the Midwest - Owlets

Angella Moorehouse & Illinois Nature Preserve Commission

Photos: Angella Moorehouse (angella.moorehouse@illinois.gov). Produced by: Angella Moorehouse with the assistance of Alicia Diaz, Field Museum. Identification assistance provided by: multiple sources (inaturalist.org; bugguide.net)

© Field Museum (2021) CC BY-NC 4.0. Licensed works are free to use/share/remix with attribution, but commercial use of the original work is not permitted.

[fieldguides.fieldmuseum.org] [1328] version 1 7/2021



81 *Nigetia formosalis*
EREBIDAE
Thin-winged Owlet



82 *Scolecampa liburna*
EREBIDAE
Dead-wood Borer Moth



83 *Marathysa inflicta*
EUTELIIDAE
Dark Marathysa



84 *Paectes oculatrix*
EUTELIIDAE
Eyed Paectes Moth



85 *Ponometia candefacta*
NOCTUIDAE
Olive-shaded Bird-dropping Moth



86 *Ponometia erastrioides*
NOCTUIDAE
Small Bird-dropping Moth



87 *Ponometia semiflava*
NOCTUIDAE
The Half-yellow



88 *Spragueia apicalis*
NOCTUIDAE
Yellow Spragueia Moth



89 *Spragueia leo*
NOCTUIDAE
Common Bird-dropping Moth



90 *Tarache aprica*
NOCTUIDAE
Exposed Bird-dropping Moth



91 *Acrionicta afflicta*
NOCTUIDAE
Afflicted Dagger



92 *Acrionicta connecta*
NOCTUIDAE
Connected Dagger



93 *Acrionicta fragilis*
NOCTUIDAE
Fragile Dagger



94 *Acrionicta cf. interrupta*
NOCTUIDAE
Interrupted Dagger



95 *Acrionicta cf. morula*
NOCTUIDAE
Ochre Dagger



96 *Acrionicta cf. retardata*
NOCTUIDAE
Maple Dagger



97 *Acrionicta cf. rubricoma*
NOCTUIDAE
Ruddy Dagger



98 *Acrionicta vinnula*
NOCTUIDAE
Delightful Dagger



99 *Cerma crintha*
NOCTUIDAE
Tufted Bird-dropping Moth



100 *Harrisimemna trisignata*
NOCTUIDAE
Harris' Three Spot

Midwest Region, USA

Beginner's Guide to Moths of the Midwest - Owlets

Angella Moorehouse & Illinois Nature Preserve Commission

Photos: Angella Moorehouse (angella.moorehouse@illinois.gov). Produced by: Angella Moorehouse with the assistance of Alicia Diaz, Field Museum.

Identification assistance provided by: multiple sources (inaturalist.org; bugguide.net)

© Field Museum (2021) CC BY-NC 4.0. Licensed works are free to use/share/remix with attribution, but commercial use of the original work is not permitted.

[fieldguides.fieldmuseum.org]

[1328] version 1 7/2021



101 *Alypia octomaculata*
NOCTUIDAE
Eight-spotted Forester



102 *Eudryas grata*
NOCTUIDAE
Beautiful Wood Nymph



103 *Eudryas unio*
NOCTUIDAE
Pearly Wood Nymph



104 *Psychomorpha epimenis*
NOCTUIDAE
Grapevine Epimenis



105 *Amphipyra pyramidoides*
NOCTUIDAE
Copper Underwing



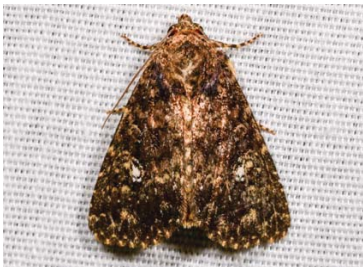
106 *Azenia obtusa*
NOCTUIDAE
Obtuse Yellow



107 *Amyna stricta*
NOCTUIDAE
Eight-spotted Moth



108 *Balsa labecula*
NOCTUIDAE
White-blotched Balsa



209 *Condica vecors*
NOCTUIDAE
Dusky Groundling Moth



110 *Condica videns*
NOCTUIDAE
White-dotted Groundling Moth



111 *Homophoberia apicosa*
NOCTUIDAE
Black Wedge-spot



112 *Ogdoconta cinereola*
NOCTUIDAE
Common Pinkband



113 *Perigea xanthioides*
NOCTUIDAE
Red Groundling Moth



114 *Crambodes talidiformis*
NOCTUIDAE
Verbena Moth



115 *Leuconycta diptheroides*
NOCTUIDAE
Green Leuconycta



116 *Maliattha synochitis*
NOCTUIDAE
Black-dotted Maliattha



117 *Marimatha nigrofimbria*
NOCTUIDAE
Black-bordered Lemon



118 *Protodeltote muscosula*
NOCTUIDAE
Large Mossy Glyph



119 *Tripuda quadrifera*
NOCTUIDAE
Harp-winged Tripuda



120 *Tripuda rectangula*
NOCTUIDAE
Rectangular Tripuda

Midwest Region, USA

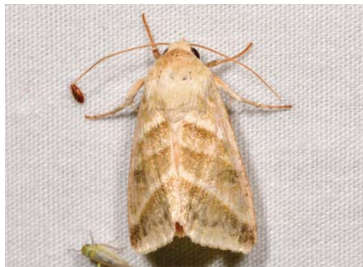
Beginner's Guide to Moths of the Midwest - Owlets

Angella Moorehouse & Illinois Nature Preserve Commission

Photos: Angella Moorehouse (angella.moorehouse@illinois.gov). Produced by: Angella Moorehouse with the assistance of Alicia Diaz, Field Museum. Identification assistance provided by: multiple sources (inaturalist.org; bugguide.net)

© Field Museum (2021) CC BY-NC 4.0. Licensed works are free to use/share/remix with attribution, but commercial use of the original work is not permitted.

[fieldguides.fieldmuseum.org] [1328] version 1 7/2021



121 *Chloridea virescens*
NOCTUIDAE
Tobacco Budworm



122 *Helicoverpa zea*
NOCTUIDAE
Corn Earworm



123 *Heliocheilus lupatus*
NOCTUIDAE
Spotted Straw Moth



124 *Heliolithis phloxiphaga*
NOCTUIDAE
Spotted Buff Gem Moth



125 *Pyrrhia cilisca*
NOCTUIDAE
Bordered Sallow Moth



126 *Schinia arcigera*
NOCTUIDAE
Arcigera Flower Moth



127 *Schinia florida*
NOCTUIDAE
Primrose Flower Moth



128 *Schinia grandimedia*
NOCTUIDAE
Boneset Flower Moth



129 *Schinia jaguarina*
NOCTUIDAE
Scurf Pea Flower Moth



130 *Schinia lucens*
NOCTUIDAE
Leadplant Flower Moth



131 *Schinia nubila*
NOCTUIDAE
Camphorweed Flower Moth



132 *Schinia nundina*
NOCTUIDAE
Goldenrod Flower Moth



133 *Schinia obscurata*
NOCTUIDAE
Fleabane Flower Moth



134 *Schinia rivulosa*
NOCTUIDAE
Ragweed Flower Moth



135 *Schinia saturata*
NOCTUIDAE
Brown Flower Moth



136 *Schinia siren*
NOCTUIDAE
Alluring Flower Moth



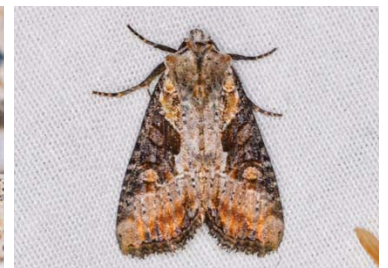
137 *Schinia trifascia*
NOCTUIDAE
Three-lined Flower Moth



138 *Schinia* sp. 13
NOCTUIDAE
Flower Moth



139 *Nedra ramosula*
NOCTUIDAE
Gray Half-spot



140 *Lateroligia ophiogramma*
NOCTUIDAE
Double-lobed Moth

Midwest Region, USA

Beginner's Guide to Moths of the Midwest - Owlets

Angella Moorehouse & Illinois Nature Preserve Commission

Photos: Angella Moorehouse (angella.moorehouse@illinois.gov). Produced by: Angella Moorehouse with the assistance of Alicia Diaz, Field Museum. Identification assistance provided by: multiple sources (inaturalist.org; bugguide.net)

© Field Museum (2021) CC BY-NC 4.0. Licensed works are free to use/share/remix with attribution, but commercial use of the original work is not permitted.

[fieldguides.fieldmuseum.org]

[1328] version 1 7/2021



141 *Meropleon cf. ambifusca*
NOCTUIDAE
Newman's Brocade Moth



142 *Oligia chlorostigma*
NOCTUIDAE
Cutworm Moth



143 *Papaipema baptisiae*
NOCTUIDAE
Indigo Stem Borer Moth



144 *Papaipema nebris*
NOCTUIDAE
Stalk Borer Moth



145 *Athetis tarda*
NOCTUIDAE
Slowpoke Moth



146 *Proxenus miranda*
NOCTUIDAE
Miranda Moth



147 *Chytonix cf. palliatricula*
NOCTUIDAE
Cloaked Marvel



148 *Elaphria chalcedonia*
NOCTUIDAE
Chalcedony Midget



149 *Elaphria grata*
NOCTUIDAE
Grateful Midget



150 *Elaphria versicolor*
NOCTUIDAE
Variegated Midget



151 *Galgula partitia*
NOCTUIDAE
Wedgling Moth



152 *Lacinipolia renigera*
NOCTUIDAE
Bristly Cutworm



153 *Pseudorthodes vecors*
NOCTUIDAE
Small Brown Quaker



154 *Melanchra adjuncta*
NOCTUIDAE
Hitched Arches



155 *Leucania amygdalina*
NOCTUIDAE
Northern Linen Wainscot



156 *Leucania pseudarygria*
NOCTUIDAE
False Wainscot



157 *Leucania ursula*
NOCTUIDAE
Ursula Wainscot



158 *Leucania sp. 4*
NOCTUIDAE
Wainscot Moth



159 *Mythimna unipuncta*
NOCTUIDAE
White Speck Moth



160 *Agrotis ipsilon*
NOCTUIDAE
Ipsilon Dart

Midwest Region, USA

Beginner's Guide to Moths of the Midwest - Owlets

Angella Moorehouse & Illinois Nature Preserve Commission

Photos: Angella Moorehouse (angella.moorehouse@illinois.gov). Produced by: Angella Moorehouse with the assistance of Alicia Diaz, Field Museum.
 Identification assistance provided by: multiple sources (inaturalist.org; bugguide.net)

© Field Museum (2021) CC BY-NC 4.0. Licensed works are free to use/share/remix with attribution, but commercial use of the original work is not permitted.

[fieldguides.fieldmuseum.org]

[1328] version 1 7/2021



161 *Anicla illapsa*
NOCTUIDAE
Snowy Dart



162 *Anicla inflecta*
NOCTUIDAE
Green Cutworm



163 *Dichagyris acclivis*
NOCTUIDAE
Inclined Dart Moth



164 *Feltia jaculifera*
NOCTUIDAE
Dingy Cutworm Moth



165 *Peridroma saucia*
NOCTUIDAE
Variegated Cutworm Moth



166 *Agnorisma badinodis*
NOCTUIDAE
Pale-banded Dart



167 *Meganola cf. minusula*
NOCTUIDAE
Meganola Moth



168 *Meganola cf. phylla*
NOCTUIDAE
Meganola Moth



169 *Protolampra brunneicollis*
NOCTUIDAE
Brown-collared Dart



170 *Xestia c-nigrum dolosa* complex
NOCTUIDAE
Black-letter Dart



171 *Spodoptera ornithogalli*
NOCTUIDAE
Yellow-striped Armyworm



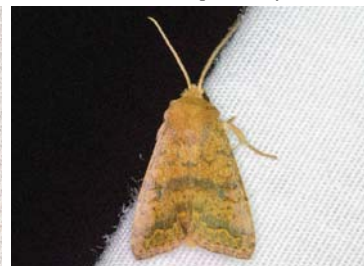
172 *Pseudeustrotia carneola*
NOCTUIDAE
Pink-barred Pseudeustrotia



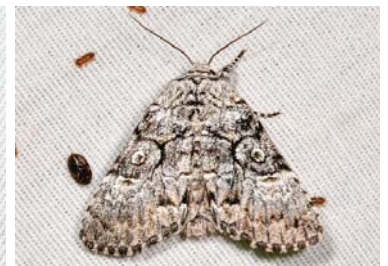
173 *Cosmia calami*
NOCTUIDAE
American Dun-bar



174 *Eupsilia vinulenta*
NOCTUIDAE
Straight-toothed Sallow



175 *Sunira bicolorago*
NOCTUIDAE
Bicolored Sallow



176 *Charadra deridens*
NOCTUIDAE
The Laugher



177 *Chrysodeixis includens*
NOCTUIDAE
Soybean Looper



178 *Rachiplusia ou*
NOCTUIDAE
Gray Looper



179 *Allograpta aerea*
NOCTUIDAE
Unspotted Looper



180 *Anagrapha falcifera*
NOCTUIDAE
Celery Looper

Midwest Region, USA

Beginner's Guide to Moths of the Midwest - Owlets

Angella Moorehouse & Illinois Nature Preserve Commission

Photos: Angella Moorehouse (angella.moorehouse@illinois.gov). Produced by: Angella Moorehouse with the assistance of Alicia Diaz, Field Museum.

Identification assistance provided by: multiple sources (inaturalist.org; bugguide.net)

© Field Museum (2021) CC BY-NC 4.0. Licensed works are free to use/share/remix with attribution, but commercial use of the original work is not permitted.

[fieldguides.fieldmuseum.org]

[1328] version 1 7/2021



181 *Autographa precationis*
NOCTUIDAE
Common Looper



182 *Raphia frater*
NOCTUIDAE
The Brother Moth



183 *Garella nilotica*
NOLIDAE
Black-olive Caterpillar Moth



184 *Nola cereella*
NOLIDAE
Sorghum Webworm Moth



185 *Baileya australis*
NOLIDAE
Small Bailey



186 *Furcula cinereal*
NOTODONTIDAE
Gray Furcula



187 *Heterocampa biundata*
NOTODONTIDAE
Wavy-lined Heterocampa



188 *Heterocampa subrotata*
NOTODONTIDAE
Small Heterocampa



189 *Heterocampa umbrata*
NOTODONTIDAE
White-blotched Heterocampa



190 *Lochmaeus bilineata*
NOTODONTIDAE
Double-lined Prominent



191 *Paraeschra georgica*
NOTODONTIDAE
Georgia Prominent



192 *Schizura unicornis*
NOTODONTIDAE
Unicorn Caterpillar Moth



193 *Gluphisia septentrionis*
NOTODONTIDAE
Common Gluphisia



194 *Nerice bidentata*
NOTODONTIDAE
Double-toothed Prominent



195 *Phoesia rimosa*
NOTODONTIDAE
Black-rimmed Prominent



196 *Ellida caniplaga*
NOTODONTIDAE
Linden prominent



197 *Datana integerrima*
NOTODONTIDAE
Walnut Caterpillar Moth



198 *Datana perspicua*
NOTODONTIDAE
Spotted Datana Moth



199 *Nadata gibbosa*
NOTODONTIDAE
White-dotted Prominent



200 *Peridea angulosa*
NOTODONTIDAE
Prominent Moth

Midwest Region, USA

Beginner's Guide to Moths of the Midwest - Owlets

13

Angella Moorehouse & Illinois Nature Preserve Commission

Photos: Angella Moorehouse (angella.moorehouse@illinois.gov). Produced by: Angella Moorehouse with the assistance of Alicia Diaz, Field Museum. Identification assistance provided by: multiple sources (inaturalist.org; bugguide.net)



© Field Museum (2021) CC BY-NC 4.0. Licensed works are free to use/share/remix with attribution, but commercial use of the original work is not permitted.

[fieldguides.fieldmuseum.org]

[1328] version 1 7/2021

TAXONOMIC LIST OF MOTHS INCLUDED IN FIELD GUIDE

This list attempts to depict the organization of the photos by taxonomic grouping. While all moths in the photos have assigned superfamilies and families not all of those are classified to subfamily, tribe or subtribe. Where these classifications are available, they were used to organize the photos. Taxonomic classification was obtained from iNaturalist and BugGuide.

SUPERFAMILY: Noctuoidea

FAMILY: Erebidae

SUBFAMILY: Arctiinae

TRIBE: Lithosiini

SUBTRIBE: Cisthenina

1 *Cisthene plumbea* Lead-colored Lichen Moth: medium gray with central peach spot and streak

2 *Hypoprepia fucosa* Painted Lichen Moth: bright orange-red and gray vertical striping

3 *Hypoprepia miniata* Scarlet Lichen Moth: bright red and gray vertical striping

4 *Lycomorpha pholus* Black and Yellow Lichen Moth: bright orange-yellow front, black posterior; net-wing beetle mimic

SUBTRIBE: Lithosiini

5 *Crambidia pallida* Pale Lichen Moth: warm light brown with linear streaks

TRIBE: Arctiina

SUBTRIBE: Arctiina

6 *Apantesis arge* Arge Tiger Moth: cream with black vertical marks and pale pink highlights; found in sand prairies

7 *Apantesis phalerata* Harnessed Tiger Moth: cream vertical cross hatching with black, red and black underwings

8 *Apantesis virgo* Virgin Tiger Moth: black with cream cross hatching, orange red underwings with black spots

9 *Virbia* sp. Orange Virbia: bright orange to orange-yellow coloration, some with blue eyes

SUBTRIBE: Spilosomina

10 *Estigmene acrea* Salt Marsh Moth: white with black speckling; bright orange underwings and body

11 *Hypercompe scribonia* Giant Leopard Moth: large size; white with black spots; body with metallic blue and orange spots

12 *Hyphantria cunea* Fall Webworm Moth: all white often with tiny black spots; fuzzy head

13 *Pyrrharctia isabella* Isabella Tiger Moth: (wooly bear caterpillar) tannish-orange with black spots

14 *Spilosoma congrua* Agreeable Tiger Moth: all white often with tiny black spots, and orange on face and abdomen; fuzzy head

SUBTRIBE: Callimorhpina

15 *Haploa lecontei* Leconte's Haploa: white with dark chocolate border and upsidedown Y

16 *Haploa reversa* Reversed Haploa: most common; white with bold chocolate cross hatching

17 *Haploa* sp. Haploa Moth: pale form; distinguished from delicate cynia by triangular shape

SUBTRIBE: Ctenuchina

18 *Cisseps fulvicollis* Yellow-collared Scape Moth: very common on flowers; black with orange head and thorax

19 *Ctenucha virginica* Virginia Ctenucha: less common; black with metallic blue thorax and body, orange on head only

SUBTRIBE: Phaegopherina

20 *Cynia tenera* Delicate Cynia Moth: white with peach wing edges; rounded wings; peach and black marking on body

21 *Halysidota tessellaris/harrisii* Banded Tussock Moth: translucent peach wings resemble tissue paper; teal & orange markings on fuzzy thorax; genitalia dissection required for species ID

SUBFAMILY: Boletobiinae

TRIBE: Boletobiini

22 *Metalectra discalis* Common Fungus Moth: medium brown rounded wings with fine white speckling

TRIBE: Phytometrini

23 *Hyperstrotia nana* White-lined Graylet: overall brownish-gray, often with darker horizontal band across middle

24 *Isogona tenuis* Thin-lined Owlet: warm brown with sharp-pointed wingtips and distinct veins cross by a curving horizontal line on the posterior end

25 *Spargalmoa sexpunctata* Six-spotted Gray Moth: brownish-gray with slightly scalloped or blocky wings; dark brown horizontal band

SUBFAMILY: Eribinae

Midwest Region, USA

Beginner's Guide to Moths of the Midwest - Owlets

14

Angella Moorehouse & Illinois Nature Preserve Commission

Photos: Angella Moorehouse (angella.moorehouse@illinois.gov). Produced by: Angella Moorehouse with the assistance of Alicia Diaz, Field Museum. Identification assistance provided by: multiple sources (inaturalist.org; bugguide.net)



© Field Museum (2021) CC BY-NC 4.0. Licensed works are free to use/share/remix with attribution, but commercial use of the original work is not permitted.

[fieldguides.fieldmuseum.org]

[1328] version 1 7/2021

TAXONOMIC LIST OF MOTHS INCLUDED IN FIELD GUIDE (Cont.)

TRIBE: Catocalini

- 26 *Catocala amatrix* Sweetheart Underwing: red and black banded underwings; indistinct gray-brown mottling on forewings
- 27 *Catocala grynea* Woody Underwing: orange and black banded underwings; pale brown-gray forewings with black marks on leading edge
- 28 *Catocala illecta* Magdalen Underwing: pale grayish brown with bold orange and black underwings
- 29 *Catocala ilia* Ilea Underwing: darker brown-gray forewings often with twin white spots in center; reddish-orange and black banded underwings
- 30 *Catocala immubens* The Betrothed: dark brown forewings often with pale wing tips; red and black banded underwings
- 31 *Catocala insolabilis* Inconsolable Underwing: pale gray-brown forewings darker over back; black underwings
- 32 *Catocala neogama* Bride Underwing: medium warm brown forewings with orange and black banded underwings
- 33 *Catocala nuptialis* Married Underwing: pale brown-gray forewings with dark triangular patches on middle of leading wing edge; orange and black banded underwings
- 34 *Catocala palaeogama* Old Wife Underwing: pale gray-brown mottled forewings; orange or red and black underwings
- 35 *Catocala resecta* Yellow Gray Underwing: mottled gray-brown forewings; black underwings fringed with pale yellow
- 36 *Catocala ultronia* Ultronia Underwing: brown-gray light and dark vertically streaked forewings; red and black underwings
- 37 *Spiloloma lunilinea* Moon-lined Moth: pale gray with series of dark brown spots on leading edge of forewing; holds wings wide open like butterflies

TRIBE: Euclidiini

- 38 *Caenurgina crassiuscula* Clover Looper: warm gray-brown with 2 rows of reddish brown horizontal marks
- 39 *Caenurgina erechtea* Forage Looper: mouse gray coloration with horizontal brown marks
- 40 *Celiptera frustulum* Black Bit Moth: pale gray with yellowish tan posterior horizontal stripe and twin black spots behind thorax
- 41 *Mocis texana* Texas Mocis Moth: pale gray-brown with less distinct horizontal markings

TRIBE: Omopterini

- 42 *Lesmone detrahens* Detracted Owlet: dark gray-brown with rounded underwings and two small white spots in center of forewings
- 43 *Parallela bistriaris* Maple Looper: medium brown triangular shaped with 2 wavy horizontal lines across forewings
- 44 *Zale galbanata* Maple Zale: large dark brown-gray with finely scalloped wing edges
- 45 *Zale lunata* Lunate Zale: large brown often with white or reddish patches on forewings; finely scalloped wing edges

TRIBE: Thermesiini

- 46 *Ascalapha odorata* Black Witch: very large moth, warm brown with blue crescent and eye marks; holds wings flat out like butterflies

SUBFAMILY: Eulepidotinae

- 47 *Panopoda carneicosta* Brown Panopoda: pale brown-gray with dark dot and checkmark in center of wings
- 48 *Panopoda rufimargo* Red-lined Panopoda: tan-brown with reddish 2 horizontal stripes across forewings

SUBFAMILY: Hermiiniinae

- 49 *Bleptina caradrinalis* Bent-winged Owlet: pale brown-gray, triangular shape with twin dark spots on center of forewings
- 50 *Chytolita morbidalis* Morbid Owlet: tan with 2 wavy horizontal stripes with twin black spots above the lower wave
- 51 *Idia aemula* Common Idia: warm brown with dark brown wavy horizontal stripes and twin peach spots on forewings
- 52 *Idia americanalis* American Idia: mottled gray front blending to brownish posterior with orangish marks on forewing
- 53 *Idia dimineunalis* Orange-spotted Idia
- 54 *Idia forbesii* Forbes's Idia
- 55 *Idia rotundalis* Rotund Idia
- 56 *Lascoria ambigualis* Ambiguous Moth: elephant snout, triangular reddish brown with uneven or scalloped base of wings

Midwest Region, USA

Beginner's Guide to Moths of the Midwest - Owlets

15

Angella Moorehouse & Illinois Nature Preserve Commission

Photos: Angella Moorehouse (angella.moorehouse@illinois.gov). Produced by: Angella Moorehouse with the assistance of Alicia Diaz, Field Museum. Identification assistance provided by: multiple sources (inaturalist.org; bugguide.net)



© Field Museum (2021) CC BY-NC 4.0. Licensed works are free to use/share/remix with attribution, but commercial use of the original work is not permitted.

[fieldguides.fieldmuseum.org]

[1328] version 1 7/2021

TAXONOMIC LIST OF MOTHS INCLUDED IN FIELD GUIDE (Cont.)

57 *Macrochilo hypocritalis* Two-dotted Macrochilo: curved snout, pale tan, triangular shape with inverted v markings

58 *Macrochilo litophora* Brown-lined Owlet: curved snout, pale tan, triangular shape with parallel wavy horizontal striping across forewings

59 *Palthis angulalis* Dark-spotted Palthis: elephant snout, folded wings, tan with dark reddish brown inverted V across wings

60 *Palthis asopialis* Faint-spotted Palthis: elephant snout, folded wings, tan with brown horizontal band

61 *Phalaenophana pyramusalis* Dark-banded Owlet: pale tan deltoid shaped with large curved horned and wavy wing edges and dark horizontal striped bands

62 *Phalaenostola larentioides* Black-banded Owlet: darker brown-gray triangular shaped with narrow elephant snout and wavy wing edges and dark horizontal striped bands

63 *Phalaenostola metonalis* Pale Phalaenostola: pale warm brown triangular shaped with narrow elephant snout; thin wavy horizontal lines across forewing

64 *Renia adspersgillus* Speckled Renia: pale to medium brown deltoid with peach spots and dark wavy lines across forewing

65 *Renia salusalis* Dotted Renia: pale tan brown deltoid with peach dashes and spots arranged in wavy line across lower forewing

66 *Tetanolita floridana* Florida Retanolita: pale tan brown deltoid with faint spots and darker bands across forewing

67 *Zanclognatha cruralis* Early Fan Foot: pale tan triangular shaped with 3 parallel wavy lines across forewings

68 *Zanclognatha jacchusalis* Wavy-lined Fan Foot: tan gray triangular shaped with 3 parallel wavy lines, pale line across lower forewing

69 *Zanclognatha pedipilalis* Gray Fan Foot: pale gray triangular shaped with 3 parallel wavy lines across forewing

SUBFAMILY: Hypeninae

70 *Hypena abalienalis* White-lined Hypena: chocolate brown, deltoid snout moth with white lace border

71 *Hypena bijugalis* Dimorphic Hypena: deltoid snout moth with dark brown triangular patches on outer forewings, often outlined in white

72 *Hypena deceptalis* Deceptive Hypena: deltoid snout moth, often two-toned brown with 2 pale horizontal stripes across forewings

73 *Hypena humuli* Hop Vine Hypena: narrow deltoid snout moth, warm brown, outer dark patches on forewings less distinct

74 *Hypena madefactalis* Gray-edged Hypena: reddish brown deltoid snout moth with gray banded at base of forewings

75 *Hypena manalis* Flowing-line Hypena: similar to H. bijugalis but dark brown patches more blob-shaped and often outlined in white

76 *Hypena scabra* Green Cloverworm: most common Hypena, narrow deltoid often with dark patches on outer forewings, color variable brown-gray

77 *Melanomma auricinctaria* Gold-lined Melanomma: pale brownish-gray with slightly folded wings and black eyespots near outer part of forewings

SUBFAMILY: Lymantriinae

TRIBE: Orgyiini

78 *Orgia leucostigma* White-marked Tussock Moth: fuzzy gray legs and body, often with 2 small white spots on interior of forewing

SUBFAMILY: Pangraptinae

79 *Ledaea perditalis* Lost Owlet: warm tan, deltoid shaped with blocky wing edges and a dark brown handlebar moustache across the lower forewings

SUBFAMILY: Rivulinae

80 *Rivula propinqualis* Spotted Grass Moth: tannish-buff coloration with inverted V striping and 2 distinct brown spots on central outer edge of forewings

SUBFAMILY: Scolecocampinae

81 *Nigetia formosalis* Thin-winged Owlet: white with narrow head and sharply pointed wings and wide brown-black medial stripe

82 *Scolecocampa liburna* Dead-wood Borer Moth: pale buffy tan, small head, flattened deltoid wings with black spots

FAMILY: Euteliidia

SUBFAMILY: Euteliinae

83 *Marathyssa inficita* Dark Marathyssa: mottled reddish brown to gray-brown with open wings folded accordion-like

84 *Paectes oculatrix* Eyed Paectes: white, gray and brown with large swirled eye spots on basal interior of forewings

Midwest Region, USA

Beginner's Guide to Moths of the Midwest - Owlets

16

Angella Moorehouse & Illinois Nature Preserve Commission

Photos: Angella Moorehouse (angella.moorehouse@illinois.gov). Produced by: Angella Moorehouse with the assistance of Alicia Diaz, Field Museum. Identification assistance provided by: multiple sources (inaturalist.org; bugguide.net)



© Field Museum (2021) CC BY-NC 4.0. Licensed works are free to use/share/remix with attribution, but commercial use of the original work is not permitted.

[fieldguides.fieldmuseum.org]

[1328] version 1 7/2021

TAXONOMIC LIST OF MOTHS INCLUDED IN FIELD GUIDE (Cont.)

FAMILY: Noctuidae

SUBFAMILY: Acontiinae

TRIBE: Acontia

- 85 *Ponometia candefacta* Olive-shaded Bird-dropping Moth: resembles bird dropping; white and gray coloration with orange-olive shading
- 86 *Ponometia erastrioides* Small Bird-dropping Moth: small white and gray backed moth resembling bird dropping
- 87 *Ponometia semiflava* The Half Yellow: golden yellow anterior; brown posterior; found in sand prairies
- 88 *Spragueia apicalis* Yellow Spragueia: tan-peach coloration with rusty tufted thorax and head
- 89 *Spragueia leo* Common Spragueia: bright orange with black dashed markings
- 90 *Tarache aprica* Exposed Bird-dropping Moth: slate gray with white head and lateral spots; resembles bird dropping

SUBFAMILY: Acronictinae dagger moths – nocturnal most mottled brown or gray with white spots

- 91 *Acronicta afflicta* Afflicted Dagger: dark grayish brown with white speckling and prominent white eyespots on forewing
- 92 *Acronicta connecta* Connected Dagger: pale gray to warm reddish-brown with darker interior seams between the folded wings
- 93 *Acronicta fragilis* Fragile Dagger: gray heavily speckled with black and white and white horizontal zig zag markings across forewing
- 94 *Acronicta interrupta* Interrupted Dagger: pale mottled gray with dark seams at wing folds
- 95 *Acronicta morula* Ochre Dagger: pale gray more heavily mottled with dark streaking; some with orangish cast
- 96 *Acronicta retardata* Maple Dagger: medium mottled gray with lots of white speckling, often with 2 sets of prominent white eye spots on forewing
- 97 *Acronicta rubricoma* Ruddy Dagger: pale to medium mottled gray with lots of white and dark speckling, gray eye spots on forewing
- 98 *Acronicta vinmula* Delightful Dagger: pale gray or olive-gray with white eye spots and broken wavy line across lower forewings
- 99 *Cerma cerintha* Tufted Bird-dropping Moth: triangular shape, olive-brown head and basal band, white medial area outlined in olive and mottled gray
- 100 *Harrisimemna trisignata* Harris's Three-spot: white with delicate lacy black markings and orange-brown thorax and spots (3 pairs) on forewing

SUBFAMILY: Agaristinae

- 101 *Alypia octomaculata* Eight-spotted Forester: black with 8 prominent white or cream colored spots, 2 pairs on forewing, 2 on hindwing; orange leg tufts
- 102 *Eudryas grata* Beautiful Wood Nymph: resembles bird dropping; larger, white with wings outlined in dark reddish brown, outer margin is curved; yellowish-orange underwings
- 103 *Eudryas unio* Pearly Wood Nymph: resembles bird droppings; smaller, white with wings outlined in dark reddish brown, brown scalloped shape along terminal edge; yellowish-orange underwings
- 104 *Psychomorpha epimenis* Grapevine Epimenis: black and dark blue with bold white spots on outer forewing, red spots on underwing

SUBFAMILY: Amphipyrinae

TRIBE: Amphipyriini

- 105 *Amphipyra pyramidoides* Copper Underwing: coppery brown color with lighter terminal band and tiny eye spots on upper forewing
- 106 *Azenia obtusa* Obtuse Yellow: bright yellow with rusty head and spots on forewing
- 107 *Amyna stricta* Eight-spotted Moth: rust and rosy-brown coloration with 2 prominent white spots on center of forewings

SUBFAMILY: Balsinae

- 108 *Balsa labecula* White-blotched Balsa: pale mottled gray with rounded wings

SUBFAMILY: Condicinae

TRIBE: Condicini

- 109 *Condica vecors* Dusky Groundling: dark shiny brown with white speckling
- 110 *Condica videns* White-dotted Groundling: streaked reddish brown with two white spots on forewings and white underwings
- 111 *Homophoberia apicosa* Black Wedge-spot: dark black to slate gray with rosy tan terminal band and central spots, 2 black wedge-shaped spots on the interior upper forewing
- 112 *Ogdoconta cinereola* Common Pinkband: rosy brown color with faint pale wavy lines and a pale rosy-tan terminal band
- 113 *Perigea xanthioides* Red Groundling: rusty orange coloration with black and gray speckling marks on forewings

Midwest Region, USA

Beginner's Guide to Moths of the Midwest - Owlets

17

Angella Moorehouse & Illinois Nature Preserve Commission

Photos: Angella Moorehouse (angella.moorehouse@illinois.gov). Produced by: Angella Moorehouse with the assistance of Alicia Diaz, Field Museum. Identification assistance provided by: multiple sources (inaturalist.org; bugguide.net)



© Field Museum (2021) CC BY-NC 4.0. Licensed works are free to use/share/remix with attribution, but commercial use of the original work is not permitted.

[fieldguides.fieldmuseum.org]

[1328] version 1 7/2021

TAXONOMIC LIST OF MOTHS INCLUDED IN FIELD GUIDE (Cont.)

TRIBE: Leuconyctini

- 114 *Crambodes talidiformis* Verbena Moth: warm buffy brown streaked with horizontal white dashes on forewing
115 *Leuconycta dephteroides* Green Leuconycta: blue-green lichen coloration with with black markings on leading edge of forewing

SUBFAMILY: Eustrotiinae

- 116 *Maliattha synochitis* Black-dotted Maliattha: white with large central olive-green spot with a few black dots
117 *Marimatha nigrofimbria* Black-bordered Lemon: lemon yellow with black terminal border and 2 pairs of small black dots on forewings
118 *Protodeltote muscosula* Large Mossy Glyph: white mottled with brown and olive; white crescent band on lower central portion of forewings
119 *Tripudia quadrifera* Harp-winged Tripudia: rosy brown color with blocky dark brown central mark on forewings
120 *Tripudia rectangular* Rectangular Tripudia: rosy brown color with central brown mark more rectangular shaped

SUBFAMILY: Heliothinae day flying flower moths often with black banded underwings, cream diagonal stripes on forewing

- 121 *Chloridea virescens* Tobacco Budworm: pale olive to tan coloration with 3 diagonal stripes across forewings; similar to *Schinia trifascia* but *Schinia* has fuzzy thorax and upper strips curves inward
122 *Helicoverpa zea* Corn Earworm: common, buffy tan with dark mottling and a diffuse line of dots along the base of the forewing; wide black banded underwings
123 *Heliocheilus lupatus* Spotted Straw Moth: uncommon, buffy tan to yellowish-orange with a pair of dark spots on the center of the forewing
124 *Heliothis phloxiphasa* Spotted Buff Gem Moth: yellowish tan with bold dark brown marking on edge of forewing and distinctly banded black and white underwings
125 *Pyrrhia cilisca* Bordered Sallow Moth: orange with fine red-brown wavy stripes on forewing; hindwing yellow with purplish bands
126 *Schinia arcigera* Arcigera Flower Moth: deep russet terminal band and fuzzy thorax with pale rosy cream medial band across forewings
127 *Schinia florida* Primrose Flower Moth: associated with primrose, lemon yellow head and terminal band, bright pink medial band across forewings
128 *Schinia grandimedia* Boneset Flower Moth: pale olive with 3 diagonal stripes across forewing; very similar to *Schinia trifascia* but upper curved stripe is more distinct (less diffuse)
129 *Schinia jaguarina* Scurf Pea Flower Moth: warm medium brown head and terminal band with pale brown medial band; bold orange and brown on underwings; associated with scurf pea
130 *Schinia lucens* Leadplant Flower Moth: purplish brown coloration with white zig zag stripes; tan and black underwings; associated with landplant
131 *Schinia nubila* Camphorweed Flower Moth: reddish brown with medium brown medial stripe and thick black and orange bands on underwings; sand prairies on camphorweed and related plants
132 *Schinia nundina* Goldenrod Flower Moth: white with olive-tan splotched banded and black crescent marks on central outer edge of forewings; associated with goldenrods
133 *Schinia obscurata* Fleabane Flower Moth: warm orange-tan with pale medial band and wide black band on underwings; associated with daisy fleabane plants
134 *Schinia rivulosa* Ragweed Flower Moth: dark gray-brown with lighter medial band lined in white; associated with ragweed
135 *Schinia saturata* Brown Flower Moth: rusty brown with orange-brown medial band; pale tan underwings
136 *Schinia siren* Alluring Flower Moth: golden yellow with buffy yellow medial band; often found on yellow flowers; black underwings
137 *Schinia trifascia* Three-lined Flower Moth: pale olive tan with 3 diagonal stripes across forewing; similar to *Chloridea virescens* but tobacco budworm lacks fluffy thorax and stripes do not curve
138 *Schinia* sp. 13 Flower Moth

SUBFAMILY: Noctuidae

TRIBE: Actinotiini

- 139 *Nedra ramosula* Gray Half-spot: heavily streaked brown and white giving gray appearance; white crescent spots on center of forewing

Midwest Region, USA

Beginner's Guide to Moths of the Midwest - Owlets

18

Angella Moorehouse & Illinois Nature Preserve Commission

Photos: Angella Moorehouse (angella.moorehouse@illinois.gov). Produced by: Angella Moorehouse with the assistance of Alicia Diaz, Field Museum. Identification assistance provided by: multiple sources (inaturalist.org; bugguide.net)



© Field Museum (2021) CC BY-NC 4.0. Licensed works are free to use/share/remix with attribution, but commercial use of the original work is not permitted.

[fieldguides.fieldmuseum.org]

[1328] version 1 7/2021

TAXONOMIC LIST OF MOTHS INCLUDED IN FIELD GUIDE (Cont.)

TRIBE: Apameini

- 140 *Lateroligia ophiogramma* Double-lobed Moth: warm brown coloration with dark brown lobes on central outer portion of forewing
- 141 *Meropleon ambifusca* Newman's Brocade Moth: inner forewing dark gray-brown shaded with black; outer part and hindwings whitish shaded with light gray
- 142 *Oligia chlorostigma* Cutworm Moth: dark gray-brown with olive green and white markings on forewing
- 143 *Papaipema baptisiae* Indigo Stalk Borer Moth: orange-brown with pairs of white spots (2 upper and 2 lower) on forewing
- 144 *Papaipema nebris* Stalk Borer Moth: medium gray-brown with 2 pairs of white spots on upper and lower forewing

TRIBE: Cardrinini

SUBTRIBE: Athetiina

- 145 *Athetis tarda* Slowpoke Moth: medium brown coloration with fine white and black speckling, 2 sets of faint wavy horizontal stripes across forewings
- 146 *Proxenus miranda* Miranda Moth: narrow wings, shiny brass to dark brown coloration with fine white spots on center of forewing

TRIBE: Elaphriini

- 147 *Chytonix palliatricula* Cloaked Marvel: dark chocolate brown mottled, some have large white blob shapes on central forewing
- 148 *Elaphria chalcedonia* Chalcedony Midget: medium brown with lighter warm yellow-brown head extending down the outer edge of the forewings, whitish medial spots
- 149 *Elaphria grata* Grateful Midget: rosy brown color with curved horizontal white stripes and 2 small white dots across the forewing
- 150 *Elaphria versicolor* Variiegated Midget: dark brown some with rust markings, white medial stripe and pale patches on outer tips of forewing
- 151 *Galgula partitia* The Wedgling: orange-brown color with dark spots on central outer edge of forewing and v-shaped shading; similar to *Rivula propinqualis* (spotted grass moth) but lacking deltoid shape

TRIBE: Eriopygini

- 152 *Lacinipolia renigera* Bristly Cutworm: common; dark rosy brown with olive green spots outlined in white on the center of forewings
- 153 *Pseudorthodes vecors* Small Brown Quaker: rusty brown color with 2 white spots and dark diffuse horizontal striping across forewings

TRIBE: Hadenini

- 154 *Melanchra adjuncta* Hitched Arches: dark brown-black coloration with white crescent spots and much white lace-like speckling throughout forewings

TRIBE: Leucaniini

- 155 *Leucania amygdalina* Northern Linen Wainscot: pale rosy tan with fuzzy thorax, fine dotted horizontal line across basal forewing with 2 central brown and white spots
- 156 *Leucania pseudarygia* False Wainscot Moth: warm tan with fuzzy thorax and front leg tufts; fine dotted horizontal line across basal forewing
- 157 *Leucania ursula* Ursula Wainscot: warm tan, somewhat shiny with fuzzy thorax and front leg tufts; two faint rows of dotted horizontal lines across basal forewing
- 158 *Leucania* sp. 4 Wainscot Moth
- 159 *Mythimna unipuncta* White Speck Moth: common; shiny rust colored with small "specks" on the central forewings

TRIBE: Noctuini

SUBTRIBE: Agrotina

- 160 *Agrotis ipsilon* Ipsilon Dart: shiny mottled dark and light brown with black markings and pale gray underwings
- 161 *Anicla illapsa* Snowy Dart: medium gray with rosy brown terminal band on forewings
- 162 *Anicla infecta* Green Cutworm: pale gray with rusty brown on central tip and black central spots on forewings
- 163 *Dichagyris acclivis* Inclined Dart: shiny copper colored with black vertical streaks and brown eye spots on central forewing
- 164 *Feltia jaculifera* Dingy Cutworm: gray with bold black and yellow-brown geometric pattern on forewings
- 165 *Peridroma saucia* Variiegated Cutworm: medium brown, somewhat shiny with few speckling on forewings

SUBTRIBE: Noctuina

Midwest Region, USA

Beginner's Guide to Moths of the Midwest - Owlets

19

Angella Moorehouse & Illinois Nature Preserve Commission

Photos: Angella Moorehouse (angella.moorehouse@illinois.gov). Produced by: Angella Moorehouse with the assistance of Alicia Diaz, Field Museum. Identification assistance provided by: multiple sources (inaturalist.org; bugguide.net)



© Field Museum (2021) CC BY-NC 4.0. Licensed works are free to use/share/remix with attribution, but commercial use of the original work is not permitted.

[fieldguides.fieldmuseum.org]

[1328] version 1 7/2021

TAXONOMIC LIST OF MOTHS INCLUDED IN FIELD GUIDE (Cont.)

166 *Agnorisma badinodis* Pale-banded Dart: rosy brown color with darker horizontal shading of curved and wavy lines; pair of black dots and block shaped markings on forewing

167 *Meganola minusula* Meganola Moth: light gray to gray-olive, squatly triangular moths

168 *Meganola phylla* Meganola Moth

169 *Protolampra brunneicollis* Brown-collared Dart: rosy brown with light brown collar below thorax and pale tan underwings

170 *Xestia c-nigrum/dolosa* complex; Black-letter Dart: warm reddish brown color with orange spots surrounded by black on outer medial edge of forewings

TRIBE: Prodeniini

171 *Spodoptera ornithogalli* Yellow-striped Armyworm: common; brown with white and yellowish-tan shading on forewing, y-shaped white marks, median basal area dark gray, pale hindwing

TRIBE: Pseudesustrontini

172 *Pseudeustrotia carneola* Pink-barred Pseudeustrotia: dark chocolate brown with pale pink diagonal slashes across center and pale white terminal band on forewings

TRIBE: Xylenini

SUBTRIBE: Cosmiina

173 *Cosmia calami* American Dun-bar Moth: peach color with 2 pairs of curved white horizontal strips and 6 circular spots in center of forewing

SUBTRIBE: Xylenina

174 *Eupsilia vinulenta* Straight-toothed Sallow: rusty orange or brown color with pale central stripe and 2 central white spots on forewing

175 *Sunira bicolorago* Bicolored Sallow: orange-yellow coloration with gray horizontal bands

SUBFAMILY: Pantheinae

176 *Charadra deridens* The Laugher: white to play gray with gray and black mottling and central eyespots on forewing

SUBFAMILY: Plusiinae

TRIBE: Argyrogrammatini

177 *Chrysodeixis includens* Soybean Looper: gray, brown, and rust with 1 large tuft on thorax, 2 smaller tufts along back and 2 white marks forming comma shape on each side of forewing

178 *Rachiplusia ou* Gray Looper: medium gray with tufts on thorax and along back, central white spots with 2 tentacle-like extensions on central forewing

TRIBE: Plusiini

SUBTRIBE: Euchalciina

179 *Allagrapha aerea* Unspotted Looper: golden yellow head with mottled rusty forewings; no white spots

SUBTRIBE: Plusiina

180 *Anagrapha falcifera* Celery Looper: grayish to reddish brown with white central spot having 2 tentacle-like extensions, one extending in arch to thorax

181 *Autographa precationis* Common Looper: gray, brown, and rust color with white spot closed at base with 2 forward extensions

SUBFAMILY: Raphiinae

182 *Raphia frater* The Brother: pale to medium gray with black wavy horizontal stripes and eye spots across forewing; white underwings

FAMILY: Nolidae

SUBFAMILY: Chloephorinae

183 *Garella nilotica* Black-olive Caterpillar Moth: pale gray coloration often with black shoulders

SUBFAMILY: Nolinae

184 *Nola cereella* Sorghum Webworm Moth: white with sharply triangular thin-wings

SUBFAMILY: Risobinae

185 *Baileya australis* Small Baileya: mottled gray-brown with white collar around thorax and black tipped forewings

FAMILY: Notodontidae

SUBFAMILY: Cerurinae

186 *Furcula cinerea* Gray Furcula: gray with fuzzy thorax and front leg tufts; forewings speckled with orange and black spots

SUBFAMILY: Heterocampinae

187 *Heterocampa biundata* Wavy-lined Heterocampa: deep olive green with fuzzy thorax and front leg tufts with rusty-orange wavy horizontal stripes on forewing

188 *Heterocampa subrotata* Small Heterocampa: smaller size, olive green and orange with fuzzy thorax and leg tufts; pale eye spots and white crescent marks on basal area of forewings

Midwest Region, USA

Beginner's Guide to Moths of the Midwest - Owlets

20

Angella Moorehouse & Illinois Nature Preserve Commission

Photos: Angella Moorehouse (angella.moorehouse@illinois.gov). Produced by: Angella Moorehouse with the assistance of Alicia Diaz, Field Museum. Identification assistance provided by: multiple sources (inaturalist.org; bugguide.net)



© Field Museum (2021) CC BY-NC 4.0. Licensed works are free to use/share/remix with attribution, but commercial use of the original work is not permitted.

[fieldguides.fieldmuseum.org] [1328] version 1 7/2021

TAXONOMIC LIST OF MOTHS INCLUDED IN FIELD GUIDE (Cont.)

189 *Heterocampa umbrata* White-blotched Heterocampa: gray-olive with fuzzy thorax and leg tufts, pale green or white patches on outer portion of forewings

190 *Lochmaeus bilineata* Double-lined Prominent: mottled gray to brown with wavy white horizontal stripes across forewings

191 *Paraeschra georgica* Georgia Prominent: mottled gray and brown, yellowish-tan shoulders

192 *Schizura unicornis* Unicorn Caterpillar Moth: pale to medium brown with tufted thorax and thin forewings curled underneath

SUBFAMILY: Notodontinae

193 *Gluphisia septentrionis* Common Gluphisia: fuzzy gray thorax with dark brown mottling or bands across central forewing

194 *Nerice bidentata* Double-toothed Prominent: pale gray medially with reddish-brown scalloped markings lined in white on lateral/outer portion of forewings

195 *Pheosia rimosa* Black-rimmed Prominent: medium brown medially with white streak through center and dark brown-black tips to forewings

SUBFAMILY: Periergosinae

196 *Ellida caniplaga* Linden Prominent: medium gray with tufted thorax; forewings may be curled under next to body, white and black crescent marks on forewings

SUBFAMILY: Phalerinae

197 *Datana integerrima* Walnut Caterpillar Moth: pale tannish-orange with darker horizontal center strip and bright rusty-orange head

198 *Datana perspicua* Spotted Datana: pale tannish-orange with darker horizontal center strip and two dark spots on center of forewings; bright rusty-orange head

199 *Nadata gibbosa* White-dotted Prominent: golden yellow-orange color with two sets of central white dots and white dashed outline on terminal edge of forewing

200 *Peridea angulosa* Angulose Prominent: fluffy gray to gray-olive coloration with orange and white spots on forewings; pale hindwings