

## Part 1: Genera and selected species I (Introduction)

by: Robert Lucking &amp; Marcela Cáceres, Department of Botany, The Field Museum, Chicago

Photos by: Robert Lucking & Marcela Cáceres. Produced by: R. Lucking, M. Giblin & R. B. Foster, with support from the Andrew Mellon Foundation.  
 © Robert Lucking and Environmental & Conservation Programs, The Field Museum, Chicago, IL 60605, USA. Rapid Color Guide #130, version 1.0. 2002



**Tropical rainforest as habitat for foliicolous lichens**  
 (Kaieteur National Park, Guyana)



**Foliicolous lichens on leaves of Bignoniaceae**  
 (Saul, French Guiana)

Few know that tropical lichen diversity surpasses that of temperate areas, and that lichens play an important role in tropical rainforest ecology, being involved in water and nutrient cycling. Foliicolous lichens, which grow on the surface of living leaves of vascular plants, are the most untypical lichens, since they are largely confined to tropical rainforest. More than 800 species are known in the world, and this guide gives an overview over genera and selected species. The leaf surfaces host many other organisms, including bryophytes, algae, fungi, bacteria, protists, and invertebrates. Together they are known as 'epiphylls', and their habitat as 'phyllosphere'.



**Foliicolous lichen mimicry by the treefrog *Hyla rufitela* and the katydid *Rosophyllum colosseum***  
 (La Selva Biological Station, Costa Rica; photo on right by Andrea Bernecker)

# FOLIICOLOUS LICHENS OF THE WORLD

WEB VERSION

## Part 1: Genera and selected species II (Arthoniales, Dothideales, Verrucariales)

by: Robert Lucking & Marcela Cáceres, Department of Botany, The Field Museum, Chicago

Photos by: Robert Lucking & Marcela Cáceres. Produced by: R. Lucking, M. Giblin & R. B. Foster, with support from the Andrew Mellon Foundation.  
© Robert Lucking and Environmental & Conservation Programs, The Field Museum, Chicago, IL 60605, USA. Rapid Color Guide #130, version 1.0. 2002



*Arthonia cyanea*  
(apothecia)



*Arthonia orbygniae*  
(apothecia)



*Eremothecella cingulata*  
(apothecia)



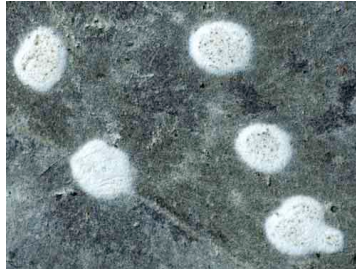
*Eremothecella calamicola*  
(pycnidia)



*Amazonomyces sprucei*  
(apothecia)



*Amazonomyces farkasiae*  
(pycnidia)



*Cryptothecia candida*  
(apothecia)



*Cryptothecia effusa*  
(apothecia)



*Mazosia rotula*  
(apothecia)



*Enterographa angustissima*  
(apothecia)



*Opegrapha filicina*  
(apothecia)



*Opegrapha serusiauxii*  
(goniocystangia)



*Microtheliopsis uleana*  
(apothecia)



*Lyromma dolicobelum*  
(pycnidia)



*Macentina perminuta*  
(perithecia)



*Psoroglaena epiphylla*  
(thallus)



*Pocsia marattiae*  
(perithecia)



*Pocsia borhidii*  
(isidia)



*Phylloblastia amazonica*  
(perithecia)



*Phylloblastia dolichospora*  
(isidia)

# FOLIICOLOUS LICHENS OF THE WORLD

WEB VERSION

## Part 1: Genera and selected species III (Pyrenulales, Trichotheliales)

by: Robert Lucking & Marcela Cáceres, Department of Botany, The Field Museum, Chicago

Photos by: Robert Lucking & Marcela Cáceres. Produced by: R. Lucking, M. Giblin & R. B. Foster, with support from the Andrew Mellon Foundation.  
© Robert Lucking and Environmental & Conservation Programs, The Field Museum, Chicago, IL 60605, USA. Rapid Colour Guide #130, version 1.0. 2002



*Aspidothelium scutellarpum*  
(perithecia)



*Aspidothelium geminiparum*  
(perithecia)



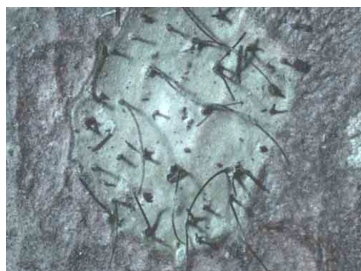
*Anisomeridium musaesporoides*  
(perithecia)



*Anisomeridium foliicola*  
(pycnidia)



*Caprettia tanzanica*  
(perithecia)



*Caprettia amazonensis*  
(pycnidia)



*Musaespora kalbii*  
(perithecia)



*Musaespora coccinea*  
(campylidia)



*Strigula macrocarpa*  
(perithecia)



*Strigula nemathora*  
(perithecia)



*Strigula phyllogena*  
(perithecia)



*Phyllocratera papuana*  
(perithecia)



*Flavobathelium epiphyllum*  
(perithecia)



*Phyllobathelium firmum*  
(perithecia)



*Phyllobathelium leguminosae*  
(pycnidia)



*Trichothelium argenteum*  
(perithecia)



*Porina deremensis*  
(perithecia)



*Porina limbulata*  
(perithecia)



*Porina lucida*  
(perithecia)



*Porina alba* ("Phyllophiale")  
(isidia)

# FOLIICOLOUS LICHENS OF THE WORLD

WEB VERSION

## Part 1: Genera and selected species IV (Ostropales, Gyalectales)

by: Robert Lucking & Marcela Cáceres, Department of Botany, The Field Museum, Chicago

Photos by: Robert Lucking & Marcela Cáceres. Produced by: R. Lucking, M. Giblin & R. B. Foster, with support from the Andrew Mellon Foundation.  
© Robert Lucking and Environmental & Conservation Programs, The Field Museum, Chicago, IL 60605, USA. Rapid Color Guide #130, Version 1.0. 2002



*Gyalidea phyllophila*  
(apothecia)



*Psorotheciopsis guajalitensis*  
(apothecia)



*Asterothyrium rondoniense*  
(apothecia)



*Gyalideopsis vulgaris*  
(apothecia)



*Hippocrepidea nigra*  
(apothecia and hyphophores)



*Aderkomyces albostrigosus*  
(apothecium and setae)



*Aderkomyces dilatatus*  
(hyphophore)



*Tricharia longispora*  
(apothecium and setae)



*Echinoplaca epiphylla*  
(apothecia and setae)



*Calenia dictyospora*  
(apothecia)



*Gyalectidium caucasicum*  
(apothecia)



*Gyalectidium filicinum*  
(hyphophores)



*Aulaxina submuralis*  
(apothecia)



*Paratracharia paradoxa*  
(apothecia and setae)



*Chroodiscus coccineus*  
(apothecia)



*Chroodiscus mirificus*  
(isidia)



*Phaeographis inconspicua*  
(apothecia)



*Coenogonium interpositum*  
(apothecia)



*Coenogonium siquirrensis*  
(apothecia)



*Semigyalecta paradoxa*  
(apothecia)

# FOLIICOLOUS LICHENS OF THE WORLD

WEB VERSION

## Part 1: Genera and selected species V (Lecanorales I)

by: Robert Lucking & Marcela Cáceres, Department of Botany, The Field Museum, Chicago

Photos by: Robert Lucking & Marcela Cáceres. Produced by: R. Lucking, M. Giblin & R. B. Foster, with support from the Andrew Mellon Foundation.  
© Robert Lucking and Environmental & Conservation Programs, The Field Museum, Chicago, IL 60605, USA. Rapid Color Guide #130, version 1.0. 2002



*Coccocarpia stellata*  
(apothecia)



*Parmeliella nigrocincta*  
(apothecia)



*Podotara pilophoriformis*  
(apothecia)



*Fuscidea fulva*  
(apothecia)



*Bacidina apiahica*  
(apothecia)



*Bacidina pseudohyphorifera*  
(pycnidia)



*Szczawinskia tsugae*  
(pycnidia)



*Malcolmiella rhodopsis*  
(apothecia)



*Fellhanera paradoxa*  
(apothecia)



*Fellhanera badimoides*  
(apothecia)



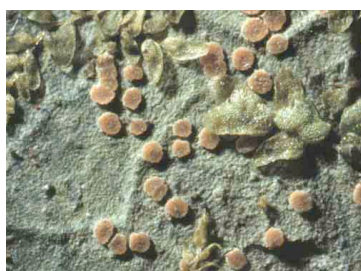
*Brasilicia brasiliensis*  
(apothecia)



*Bapalmuia lineata*  
(apothecia)



*Byssoloma leucoblepharum*  
(apothecia)



*Byssoloma fadenii*  
(apothecia)



*Byssolecania variabilis*  
(apothecia)



*Eugeniella psychotriae*  
(apothecia)



*Baflavia flavescens*  
(apothecia)



*Baflavia flavescens*  
(campylidia)



*Badimia dimidiata*  
(apothecia)



*Badimia galbinea*  
(campylidia)

# FOLIICOLOUS LICHENS OF THE WORLD

WEB VERSION

## Part 1: Genera and selected species VI (Lecanorales II, Stereales)

by: Robert Lücking & Marcela Cáceres, Department of Botany, The Field Museum, Chicago

Photos by: Robert Lücking & Marcela Cáceres. Produced by: R. Lücking, M. Giblin & R. B. Foster, with support from the Andrew Mellon Foundation.  
© Robert Lücking and Environmental & Conservation Programs, The Field Museum, Chicago, IL 60605, USA. Rapid Color Guide #130, version 1.0. 2002



*Pseudocalopadia mira*  
(apothecia)



*Pseudocalopadia mira*  
(campylidia)



*Badimiella pteridophila*  
(campylidia)



*Barubria fuscorubra*  
(campylidia)



*Calopadia lucida*  
(apothecia)



*Calopadia puiggarii*  
(campylidia)



*Tapellaria epiphylla*  
(apothecia)



*Tapellariopsis octomera*  
(campylidia)



*Lasioloma arachnoideum*  
(apothecia)



*Lasioloma trichophorum*  
(campylidia)



*Sporopodium flavescens*  
(apothecia and campylidia)



*Sporopodium antonianum*  
(campylidia)



*Loflammia epiphylla*  
(apothecia)



*Loflammia epiphylla*  
(campylidia)



*Logilvia gilva*  
(apothecia)



*Logilvia gilva*  
(apothecia and campylidia)



*Loflammiopsis brasiliensis*  
(apothecia)



*Loflammiopsis brasiliensis*  
(campylidia)



*Kantvilasia hians*  
(apothecia)



*Dictyonema phyllogenum*  
(thallus)