

Zona Reservada Allpahuayo-Mishana, Iquitos, Loreto, PERU

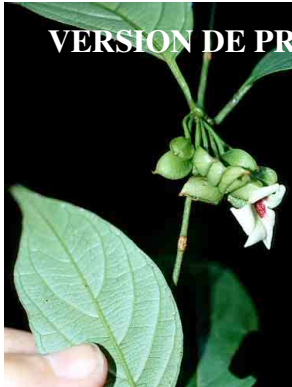
Trepadoras, Hierbas, y Epífitas de Allpahuayo-Mishana

WEB VERSION

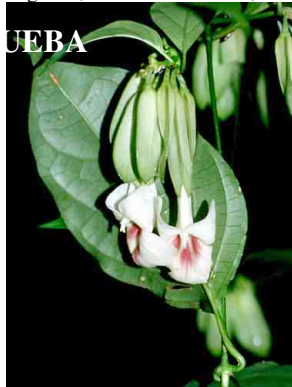
Robin Foster, Rodolfo Vasquez, Paul Fine, Italo Mesones, Heike Betz, Mary Giblin

Fotos de R. Foster, H. Betz, M. Giblin, T. Plowman, R. Burnham, M. Rios. Producido por: R. B. Foster, M. Giblin, con el apoyo del Andrew Mellon Foundation.

© Environmental & Conservation Programs, The Field Museum, Chicago, IL 60605 USA. [RRC@fmnh.org] Rapid Color Guide # 128 version 1.1



1 *Mendoncia glomerulata*
ACANTHACEAE



2 *Mendoncia*
ACANTHACEAE



3 *Pulchranthus adenostachyus*
ACANTHACEAE



4 *Odontadenia*
APOCYNACEAE



5 *Anthurium apaporanum*
ARACEAE



6 *Anthurium croatii*
ARACEAE



7 *Anthurium eminens*
ARACEAE



8 *Anthurium gracile*
ARACEAE



9 *Anthurium kunthii* cf.
ARACEAE



10 *Anthurium*
ARACEAE



11 *Anthurium*
ARACEAE



12 *Anthurium*
ARACEAE



13 *Anthurium*
ARACEAE



14 *Caladium bicolor*
ARACEAE



15 *Dieffenbachia parvifolia*
ARACEAE



16 *Dracontium peruvianum*
ARACEAE



17 *Heteropsis oblongifolia*
ARACEAE



18 *Monstera obliqua*
ARACEAE



19 *Philodendron ernestii*
ARACEAE



20 *Philodendron fragrantissimum*
ARACEAE

Zona Reservada Allpahuayo-Mishana, Iquitos, Loreto, PERU

Climbers, Herbs, & Epiphytes of Allpahuayo-Mishana

Robin Foster, Rodolfo Vasquez, Paul Fine, Italo Mesones, Heike Betz, Mary Giblin **WEB VERSION**

Photos by R. Foster, H. Betz, M. Giblin, T. Plowman, R. Burnham, M. Rios. Produced by: R. B. Foster, M. Giblin, with support from the Andrew Mellon Foundation.

© Environmental & Conservation Programs, The Field Museum, Chicago, IL 60605 USA. [RRC@fmnh.org] Rapid Color Guide # 128 version 1.1



21 *Philodendron inaequilaterum*
ARACEAE



22 *Philodendron*
ARACEAE



23 *Philodendron*
ARACEAE



24 *Philodendron*
ARACEAE



25 *Philodendron*
ARACEAE



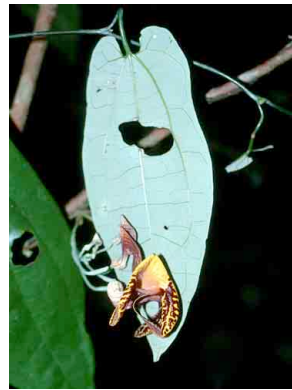
26 *Philodendron? Monstera?*
ARACEAE



27 *Rhodospatha latifolia*
ARACEAE



28 *Urospatha sagittifolia*
ARACEAE



29 *Aristolochia*
ARISTOLOCHIACEAE



30 *Aristolochia*
ARISTOLOCHIACEAE



31 *Adenostemma fosbergii*
ASTERACEAE



32 *Pollalesta discolor*
ASTERACEAE



33 *Wedelia trilobata*
ASTERACEAE



34 *Helosis cayennensis*
BALANOPHORACEAE



35 *Lophophytum mirabile*
BALANOPHORACEAE



36 *Begonia glabra*
BEGONIACEAE



37 *Arrabidaea florida*
BIGNONIACEAE



38 *Arrabidaea patellifera*
BIGNONIACEAE



39 *Arrabidaea verrucosa*
BIGNONIACEAE



40 *Callichlamys latifolia*
BIGNONIACEAE

Zona Reservada Allpahuayo-Mishana, Iquitos, Loreto, PERU

Trepadoras, Hierbas, y Epífitas de Allpahuayo-Mishana

WEB VERSION

Robin Foster, Rodolfo Vasquez, Paul Fine, Italo Mesones, Heike Betz, Mary Giblin

Fotos de R. Foster, H. Betz, M. Giblin, T. Plowman, R. Burnham, M. Rios. Producido por: R. B. Foster, M. Giblin, con el apoyo del Andrew Mellon Foundation.

© Environmental & Conservation Programs, The Field Museum, Chicago, IL 60605 USA. [RRC@fmnh.org] Rapid Color Guide # 128 version 1.1



41 *Cydista aequinoctialis*
BIGNONIACEAE



42 *Distictella magnoliifolia*
BIGNONIACEAE



43 *Mansoa verrucifera*
BIGNONIACEAE



44 *Martinella obovata*
BIGNONIACEAE



45 *Paragonia pyramidata*
BIGNONIACEAE



46 *Spathicalyx xanthophylla*
BIGNONIACEAE



47 *Stizophyllum riparium*
BIGNONIACEAE



48 *Heliotropium indicum*
BORAGINACEAE



49 *Aechmea longifolia*
BROMELIACEAE



50 *Aechmea nidularioides*
BROMELIACEAE



51 *Aechmea*
BROMELIACEAE



52 *Guzmania*
BROMELIACEAE



53 *Guzmania*
BROMELIACEAE



54 *Neoregelia stolonifera*
BROMELIACEAE



55 *Campylosiphon purpurascens*
BURMANNIACEAE



56 *Gymnosiphon divaricatus*
BURMANNIACEAE



57 *Thismia panamensis*
BURMANNIACEAE



58 *Disocactus amazonicus*
CACTACEAE



59 *Coussapoa villosa*
CECROPIACEAE



60 *Coussapoa*
CECROPIACEAE

Zona Reservada Allpahuayo-Mishana, Iquitos, Loreto, PERU

Climbers, Herbs, & Epiphytes of Allpahuayo-Mishana

Robin Foster, Rodolfo Vasquez, Paul Fine, Italo Mesones, Heike Betz, Mary Giblin **WEB VERSION**

Photos by R. Foster, H. Betz, M. Giblin, T. Plowman, R. Burnham, M. Rios. Produced by: R. B. Foster, M. Giblin, with support from the Andrew Mellon Foundation.

© Environmental & Conservation Programs, The Field Museum, Chicago, IL 60605 USA. [RRC@fmnh.org] Rapid Color Guide # 128 version 1.1



61 *Havetiopsis flexilis*
CLUSIACEAE



62 *Combretum fruticosum*
COMBRETACEAE



63 *Combretum laxum*
COMBRETACEAE



64 *Combretum llewelynii*
COMBRETACEAE



65 *Thiloua paraguariensis*
COMBRETACEAE



66 *Dichorisandra hexandra*
COMMELINACEAE



67 *Dichorisandra ulei*
COMMELINACEAE



68 *Floscopa peruviana*
COMMELINACEAE



69 *Floscopa robusta*
COMMELINACEAE



70 *Geogenanthus ciliatus*
COMMELINACEAE



71 *Tripogandra*
COMMELINACEAE



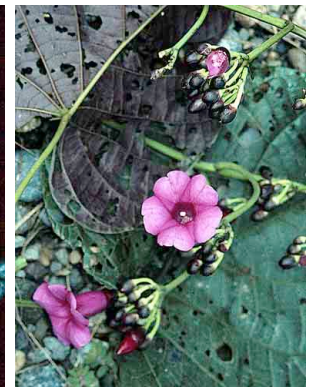
72 *Cnestidium rufescens*
CONNARACEAE



73 *Connarus ruber*
CONNARACEAE



74 *Rourea cuspidata*
CONNARACEAE



75 *Ipomoea phyllomega*
CONVOLVULACEAE



76 *Maripa peruviana*
CONVOLVULACEAE



77 *Costus lasius*
COSTACEAE



78 *Costus longibracteolatus*
COSTACEAE



79 *Costus scaber*
COSTACEAE



80 *Costus*
COSTACEAE

Zona Reservada Allpahuayo-Mishana, Iquitos, Loreto, PERU

Trepadoras, Hierbas, y Epífitas de Allpahuayo-Mishana

5

WEB VERSION

Robin Foster, Rodolfo Vasquez, Paul Fine, Italo Mesones, Heike Betz, Mary Giblin

Fotos de R. Foster, H. Betz, M. Giblin, T. Plowman, R. Burnham, M. Rios. Producido por: R. B. Foster, M. Giblin, con el apoyo del Andrew Mellon Foundation.

© Environmental & Conservation Programs, The Field Museum, Chicago, IL 60605 USA. [RRC@fmnh.org] Rapid Color Guide # 128 version 1.1



81 *Fevillea cordifolia*
CUCURBITACEAE



82 *Gurania eriantha*
CUCURBITACEAE



83 *Gurania lobata*
CUCURBITACEAE



84
CUCURBITACEAE



85 *Cyclanthus bipartitus*
CYCLANTHACEAE



86 *Evodianthus funifer*
CYCLANTHACEAE



87 *Ludovia lancifolia*
CYCLANTHACEAE



88 *Thoracocarpus bissectus*
CYCLANTHACEAE



89 *Cyperus laxus*
CYPERACEAE



90 *Cyperus luzulae*
CYPERACEAE



91 *Fimbristylis dichotoma*
CYPERACEAE



92 *Rhynchospora corymbosa*
CYPERACEAE



93 *Scleria microcarpa*
CYPERACEAE



94 *Scleria secans*
CYPERACEAE



95 *Dichapetalum spruceanum*



96 *Davilla kunthii*
DILLENIACEAE



97 *Davilla nitida*
DILLENIACEAE



98 *Doliocarpus dentatus* cf.
DILLENIACEAE



99 *Doliocarpus dentatus* cf.
DILLENIACEAE



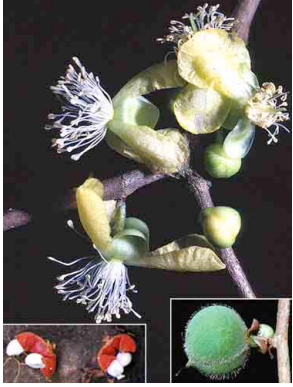
100 *Doliocarpus major*
DILLENIACEAE

Zona Reservada Allpahuayo-Mishana, Iquitos, Loreto, PERU Climbers, Herbs, & Epiphytes of Allpahuayo-Mishana

Robin Foster, Rodolfo Vasquez, Paul Fine, Italo Mesones, Heike Betz, Mary Giblin **WEB VERSION**

Photos by R. Foster, H. Betz, M. Giblin, T. Plowman, R. Burnham, M. Rios. Produced by: R. B. Foster, M. Giblin, with support from the Andrew Mellon Foundation.

© Environmental & Conservation Programs, The Field Museum, Chicago, IL 60605 USA. [RRC@fmnh.org] Rapid Color Guide # 128 version 1.1



101 *Doliocarpus olivaceus*
DILLENIACEAE



102 *Dalechampia magnoliifolia*
EUPHORBIACEAE



103 *Manihot brachyloba*
EUPHORBIACEAE



104 *Plukenetia brachybotrya*
EUPHORBIACEAE



105 *Plukenetia volubilis*
EUPHORBIACEAE



106 *Bauhinia glabra*
FABACEAE-CAES



107 *Bauhinia guianensis*
FABACEAE-CAES



108 *Centrosema*
FABACEAE-PAP



109 *Dalbergia monetaria*
FABACEAE-PAP



110 *Dioclea ucalina*
FABACEAE-PAP



111 *Entada polyphylla*
FABACEAE-MIM



112 *Machaerium cuspidatum*
FABACEAE-PAP



113 *Machaerium kegelii*
FABACEAE-PAP



114 *Machaerium leiophyllum*
FABACEAE-PAP



115 *Piptadenia anolidurus*
FABACEAE-MIM



116 *Irlbachia alata*
GENTIANACEAE



117 *Voyria*
GENTIANACEAE



118 *Codonanthe crassifolia*
GESNERIACEAE



119 *Codonanthe uleana*
GESNERIACEAE



120 *Drymonia macrophylla*
GESNERIACEAE

Zona Reservada Allpahuayo-Mishana, Iquitos, Loreto, PERU

Trepadoras, Hierbas, y Epífitas de Allpahuayo-Mishana

7

WEB VERSION

Robin Foster, Rodolfo Vasquez, Paul Fine, Italo Mesones, Heike Betz, Mary Giblin

Fotos de R. Foster, H. Betz, M. Giblin, T. Plowman, R. Burnham, M. Rios. Producido por: R. B. Foster, M. Giblin, con el apoyo del Andrew Mellon Foundation.

© Environmental & Conservation Programs, The Field Museum, Chicago, IL 60605 USA. [RRC@fmnh.org] Rapid Color Guide # 128 version 1.1



121 *Drymonia semicordata*
GESNERIACEAE



122 *Drymonia serrulata*
GESNERIACEAE



123 *Drymonia*
GESNERIACEAE



124 *Drymonia*
GESNERIACEAE



125 *Drymonia*
GESNERIACEAE



126 *Drymonia*
GESNERIACEAE



127 *Episcia reptans*
GESNERIACEAE



128 *Nautilocalyx pallidus*
GESNERIACEAE



129
GESNERIACEAE



130
GESNERIACEAE



131 *Gnetum leyboldii*
GENTIANACEAE



132 *Heliconia hirsuta*
HELICONIACEAE



133 *Heliconia lasiorachis*
HELICONIACEAE



134 *Heliconia rostrata*
HELICONIACEAE



135 *Heliconia stricta*
HELICONIACEAE



136 *Heliconia velutina*
HELICONIACEAE



137 *Heliconia*
HELICONIACEAE



138 *Sparattanthelium*
HERNANDIACEAE



139 *Hippocratea volubilis*
HIPPOCRATEACEAE



140 *Tontelea attenuata*
HIPPOCRATEACEAE

Zona Reservada Allpahuayo-Mishana, Iquitos, Loreto, PERU

Climbers, Herbs, & Epiphytes of Allpahuayo-Mishana

Robin Foster, Rodolfo Vasquez, Paul Fine, Italo Mesones, Heike Betz, Mary Giblin

WEB VERSION

Photos by R. Foster, H. Betz, M. Giblin, T. Plowman, R. Burnham, M. Rios. Produced by: R. B. Foster, M. Giblin, with support from the Andrew Mellon Foundation.

© Environmental & Conservation Programs, The Field Museum, Chicago, IL 60605 USA. [RRC@fmnh.org] Rapid Color Guide # 128 version 1.1



141 *Lereticia cordata*
ICACINACEAE



142 *Limnocharis flava*
LIMNOCHARITACEAE



143 *Strychnos darienensis*
LOGANIACEAE



144 *Strychnos*
LOGANIACEAE



145 *Psittacanthus peculiaris*
LORANTHACEAE



146 *Hiraea reclinata*
MALPIGHIACEAE



147 *Mascagnia*
MALPIGHIACEAE



148 *Stigmaphyllon*
MALPIGHIACEAE



149 *Pavonia fruticosa*
MALVACEAE



150 *Urena lobata*
MALVACEAE



151 *Calathea altissima*
MARANTACEAE



152 *Calathea capitata*
MARANTACEAE



153 *Calathea inocephala*
MARANTACEAE



154 *Calathea micans*
MARANTACEAE



155 *Calathea roseopicta*
MARANTACEAE



156 *Calathea*
MARANTACEAE



157 *Calathea*
MARANTACEAE



158 *Ischnosiphon hirsutus*
MARANTACEAE



159 *Ischnosiphon*
MARANTACEAE



160 *Monotagma angustissimum*
MARANTACEAE

Zona Reservada Allpahuayo-Mishana, Iquitos, Loreto, PERU

Trepadoras, Hierbas, y Epífitas de Allpahuayo-Mishana

9

WEB VERSION

Robin Foster, Rodolfo Vasquez, Paul Fine, Italo Mesones, Heike Betz, Mary Giblin

Fotos de R. Foster, H. Betz, M. Giblin, T. Plowman, R. Burnham, M. Rios. Producido por: R. B. Foster, M. Giblin, con el apoyo de la Andrew Mellon Foundation.

© Environmental & Conservation Programs, The Field Museum, Chicago, IL 60605 USA. [RRC@fmnh.org] Rapid Color Guide # 128 version 1.1



161 *Monotagma*
MARANTACEAE



162 *Marcgravia*
MARCRAVIACEAE



163 *Norantea guianensis*
MARCRAVIACEAE



164 *Souroubea dasystachya*
MARCRAVIACEAE



165 *Blakea rosea*
MELASTOMATACEAE



166 *Clidemia*
MELASTOMATACEAE



167 *Abuta pahni*
MENISPERMACEAE



168 *Anomospermum grandifolium*
MENISPERMACEAE



169 *Anomospermum reticulatum*
MENISPERMACEAE



170 *Borismene japurensis*
MENISPERMACEAE



171 *Chondodendron tomentosum*
MENISPERMACEAE



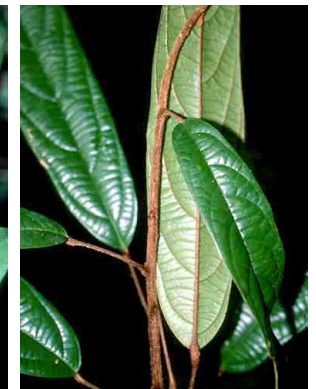
172 *Curarea toxicifera*
MENISPERMACEAE



173 *Orthomene schomburgkii*
MENISPERMACEAE



174 *Sciadotenia toxifera*
MENISPERMACEAE



175 *Telitoxicum*
MENISPERMACEAE



176 *Sauvagesia erecta*
OCHNACEAE



177 *Maxillaria*
ORCHIDACEAE



178 *Pleurothallis*
ORCHIDACEAE



179 *Passiflora foetida*
PASSIFLORACEAE



180 *Passiflora spinosa*
PASSIFLORACEAE

Zona Reservada Allpahuayo-Mishana, Iquitos, Loreto, PERU
Climbers, Herbs, & Epiphytes of Allpahuayo-Mishana

Robin Foster, Rodolfo Vasquez, Paul Fine, Italo Mesones, Heike Betz, Mary Giblin

WEB VERSION

Photos by R. Foster, H. Betz, M. Giblin, T. Plowman, R. Burnham, M. Rios. Produced by: R. B. Foster, M. Giblin, with support from the Andrew Mellon Foundation.
© Environmental & Conservation Programs, The Field Museum, Chicago, IL 60605 USA. [RRC@fmnh.org] Rapid Color Guide # 128 version 1.1



181 *Passiflora vitifolia*
PASSIFLORACEAE



182 *Passiflora*
PASSIFLORACEAE



183 *Passiflora*
PASSIFLORACEAE



184 *Phytolacca rivinoides*
PHYTOLACCACEAE



185 *Peperomia serpens*
PIPERACEAE



186 *Andropogon bicornis*
POACEAE



187 *Pariana*
POACEAE



188 *Pharus virescens*
POACEAE



189 *Moutabea aculeata*
POLYGALACEAE



190 *Coccoloba parimensis*
POLYGONACEAE



191 *Coccoloba*
POLYGONACEAE



192 *Rapatea*
RAPATEACEAE



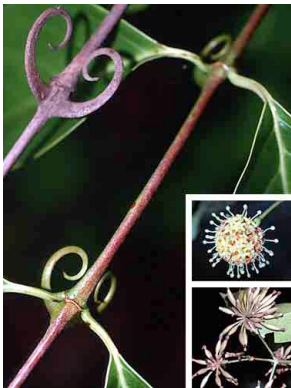
193 *Geophila*
RUBIACEAE



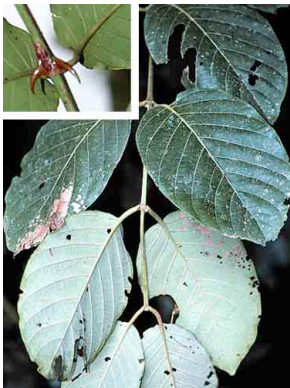
194 *Manettia*
RUBIACEAE



195 *Sabicea villosa*
RUBIACEAE



196 *Uncaria guianensis*
RUBIACEAE



197 *Uncaria tomentosa*
RUBIACEAE



198 *Paullinia pachycarpa*
SAPINDACEAE



199 *Paullinia*
SAPINDACEAE



200 *Thinouia*
SAPINDACEAE

Zona Reservada Allpahuayo-Mishana, Iquitos, Loreto, PERU

Trepadoras, Hierbas, y Epífitas de Allpahuayo-Mishana

WEB VERSION

Robin Foster, Rodolfo Vasquez, Paul Fine, Italo Mesones, Heike Betz, Mary Giblin

Fotos de R. Foster, H. Betz, M. Giblin, T. Plowman, R. Burnham, M. Rios. Producido por: R. B. Foster, M. Giblin, con el apoyo de la Andrew Mellon Foundation.

© Environmental & Conservation Programs, The Field Museum, Chicago, IL 60605 USA. [RRC@fmnh.org] Rapid Color Guide # 128 version 1.1



201 Smilax
SMILACACEAE



202 Capsicum annuum
SOLANACEAE



203 Lycianthes
SOLANACEAE



204 Markea
SOLANACEAE



205 Solanum anceps cf.
SOLANACEAE



206 Solanum
SOLANACEAE



207 Sciaphila purpurea
TRIURIDACEAE



208 Celtis iguanaea
ULMACEAE



209 Cissus erosa
VITACEAE



210 Xyris
XYRIDACEAE



211 Renealmia breviscapa
ZINGIBERACEAE



212 Renealmia floribunda
ZINGIBERACEAE



213 Renealmia thyrsoides
ZINGIBERACEAE



214 Adiantum latifolium cf.
PTERIDOPHYTA



215 Adiantum
PTERIDOPHYTA



216 Antrophyum guayanense
PTERIDOPHYTA



217 Asplenium serratum
PTERIDOPHYTA



218 Danaea nodosa
PTERIDOPHYTA



219 Dicranopteris pectinata
PTERIDOPHYTA



220 Didymochlaena truncatula
PTERIDOPHYTA

Zona Reservada Allpahuayo-Mishana, Iquitos, Loreto, PERU

Climbers, Herbs, & Epiphytes of Allpahuayo-Mishana

Robin Foster, Rodolfo Vasquez, Paul Fine, Italo Mesones, Heike Betz, Mary Giblin

WEB VERSION

Photos by R. Foster, H. Betz, M. Giblin, T. Plowman, R. Burnham, M. Rios. Produced by: R. B. Foster, M. Giblin, with support from the Andrew Mellon Foundation.

© Environmental & Conservation Programs, The Field Museum, Chicago, IL 60605 USA. [RRC@fmnh.org] Rapid Color Guide # 128 version 1.1

221 *Elaphoglossum*
PTERIDOPHYTA222 *Hystiopteris incisa*
PTERIDOPHYTA223 *Lindsaea lancea* cf.
PTERIDOPHYTA224 *Lomariopsis japurensis*
PTERIDOPHYTA225 *Metaxya rostrata*
PTERIDOPHYTA226 *Microgramma percussa*
PTERIDOPHYTA227 *Microgramma reptans*
PTERIDOPHYTA228 *Nephrolepis*
PTERIDOPHYTA229 *Polypodium decumanum*
PTERIDOPHYTA230 *Saccoloma inaequale*
PTERIDOPHYTA231 *Schizaea elegans*
PTERIDOPHYTA232 *Selaginella exaltata*
PTERIDOPHYTA233 *Selaginella*
PTERIDOPHYTA234 *Selaginella*
PTERIDOPHYTA235 *Trichomanes ankersii*
PTERIDOPHYTA236 *Trichomanes elegans*
PTERIDOPHYTA237 *Trichomanes*
PTERIDOPHYTA238 *Trichomanes*
PTERIDOPHYTA239 *Trichomanes*
PTERIDOPHYTA240 *Vittaria lineata*
PTERIDOPHYTA