

# Madre de Dios, PERU PALMAS del Centro Río Amigos

Robin Foster, Heike Betz, Hamilton Beltrán

Fotos de R. Foster & H. Betz, con unas de M. Metz, T. Wachter, T. Plowman. Producido por: R. Foster, H. Betz, M. Metz, con el apoyo de ACCA y el Andrew Mellon Foundation.  
© Environmental & Conservation Programs, The Field Museum, Chicago, IL 60605 USA. [RRC@fmnh.org] Rapid Color Guide # 83 version 1.0



1 *Aiphanes aculeata*  
*chontilla*



2 *Astrocaryum murumuru*  
*ungurauí*



3 *Astrocaryum murumuru*  
*ungurauí*



4 *Attalea butyracea*  
*shebon*



5 *Attalea butyracea*  
*shebon*



6 *Attalea phalerata*  
*shapaja*



7 *Attalea phalerata*  
*shapaja*



8 *Bactris concinna*  
*ñejilla*



9 *Bactris gasipaes*  
*pijuayo*



10 *Bactris gasipaes*  
*pijuayo*



11 *Bactris maraja*  
*ñejilla*



12 *Bactris simplicifrons*  
*ñejilla*



13 *Chamaedorea pauciflora*  
*sangapilla*



14 *Chamaedorea pinnatifrons*  
*cashipana*



15 *Chelyocarpus ulei*  
*sacha aguajillo*



16 *Desmoncus orthacanthos*  
*vara casha*



17 *Desmoncus orthacanthos*  
*vara casha*



18 *Euterpe precatoria*  
*huasai*



19 *Geonoma cf. aspidifolia*  
*palmiche macho*



20 *Geonoma cf. aspidifolia*  
*palmiche macho*



Madre de Dios, PERU  
**PALMS** of Centro Rio Amigos

Robin Foster, Heike Betz, Hamilton Beltrán

Photos by R. Foster & H. Betz, & a few by M. Metz, T. Wachter, T. Plowman Produced by: R. Foster, H. Betz, M. Metz. Support from ACCA and the Andrew Mellon Foundation.  
 © Environmental & Conservation Programs, The Field Museum, Chicago, IL 60605 USA. [RRC@fmnh.org] Rapid Color Guide # 83 version 1.0



21 *Geonoma deversa*  
*crisñeja / palmiche*



22 *Geonoma deversa*  
*crisñeja / palmiche*



23 *Geonoma macrostachys*  
*palmiche*



24 *Geonoma cf. macrostachys*  
*palmiche*



25 *Geonoma maxima*  
*palmiche*



26 *Geonoma stricta*  
*palmiche*



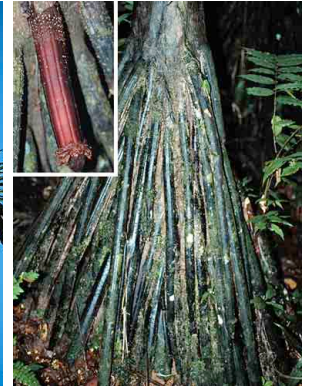
27 *Hyospathe elegans*  
*palmicho*



28 *Hyospathe elegans*  
*palmicho*



29 *Iriartea deltoidea*  
*pona*



30 *Iriartea deltoidea*  
*pona*



31 *Mauritia flexuosa*  
*aguaje*



32 *Mauritia flexuosa*  
*aguaje*



33 *Oenocarpus bataua*  
*ungurauí*



34 *Oenocarpus bataua*  
*ungurauí*



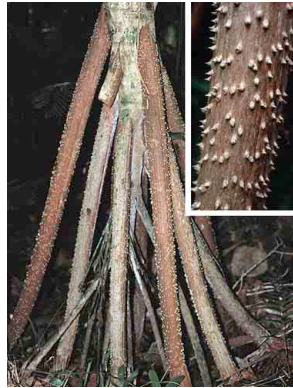
35 *Oenocarpus mapora*  
*sinami / sinamillo*



36 *Oenocarpus mapora*  
*sinami / sinamillo*



37 *Socratea exorrhiza*  
*cashapona*



38 *Socratea exorrhiza*  
*cashapona*



39 *Wettinia augusta*  
*ponilla*



40 *Wettinia augusta*  
*ponilla*