

# América Tropical

## MARSUPIALES – Especies Pequeñas

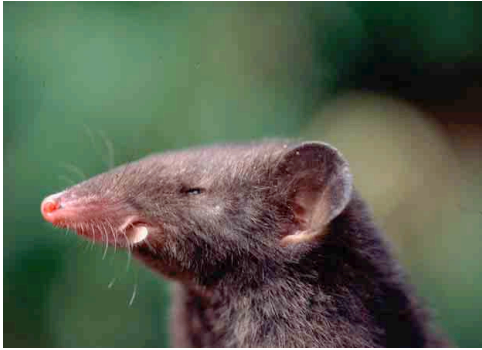
1

WEB VERSION

by: Louise H. Emmons & Philip Myers

Fotos de: L. H. Emmons & P. Myers. Producido por: L. Emmons, R. B. Foster, & M. R. Metz, con el apoyo del Andrew Mellon Foundation.

© L. H. Emmons, P. Myers, y Environmental & Conservation Programs, The Field Museum, Chicago, IL 60605 [RRC@fmnh.org] USA. Rapid Color Guide #76 version 1.1



*Lestoros inca*  
Vilcabamba, Peru



*Monodelphis adusta*  
Pampas del Heath, Peru



*Monodelphis kunsi*  
Flor de Oro, Bolivia



*Monodelphis osgoodi*  
Vilcabamba Peru



*Monodelphis sp.*  
Vilcabamba, Peru



*Monodelphis emiliae*  
Pando, Bolivia



*Monodelphis cf brevicaudata*  
Rio Xingu, Brazil



*Monodelphis glirina*  
Pando, Bolivia



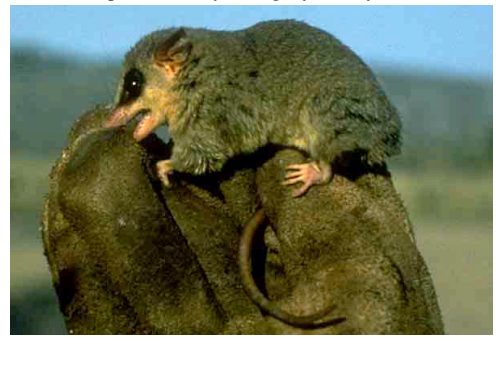
*Monodelphis domestica*  
Dept. Amambay, Paraguay (P. Myers)



*Thylamys pusilla*  
Perforacion, Bolivia



*Gracilinanus aceramarcae*  
Vilcabamba, Peru



*Gracilinanus agilis*  
Tobati, Dept. Cordillera, Paraguay (P. Myers)

# América Tropical

## MARSUPIALES – Especies Pequeñas

by: Louise H. Emmons & Philip Myers

**WEB VERSION**

Fotos de: L. H. Emmons & P. Myers. Producido por: L. Emmons, R. B. Foster & M. R. Metz, con el apoyo del Andrew Mellon Foundation.

© L. H. Emmons, P. Myers, y Environmental & Conservation Programs, The Field Museum, Chicago, IL 60605 [RRC@fmnh.org] USA. Rapid Color Guide #76 version 1.1



*Marmosa murina*  
Nouragues, French Guiana



*Marmosa robinsoni*  
Cayos Cochinos, Honduras



*Micoureus demerarae*  
El Refugio, Bolivia



*Micoureus cf regina*  
Cocha Cashu, Peru



*Marmosops noctivagus*  
Cocha Cashu, Peru



*Marmosops noctivagus*  
Cocha Cashu, Peru



*Marmosops dorothea*  
El Refugio, Bolivia



*Marmosops cf parvidens*  
Nouragues, French Guiana



*Marmosops bishopi*  
Cocha Cashu, Peru

**MARSUPIALES – Especies Grandes**

WEB VERSION

by: Louise H. Emmons & Philip Myers

Fotos de: L. H. Emmons & P. Myers. Producido por: L. Emmons, R. B. Foster, & M. R. Metz, con el apoyo del Andrew Mellon Foundation.

© L. H. Emmons, P. Myers, y Environmental & Conservation Programs, The Field Museum, Chicago, IL 60605 [RRC@fmnh.org] USA. Rapid Color Guide #76 version 1.1



*Caluromys philander*  
Xingu, Brazil



*Caluromys lanatus* pollen on head  
Rio Yasuni, Ecuador



*Caluromysiops irrupta*  
Cocha Cashu, Peru



*Didelphis albiventris*  
Tobati, Dept. Cordillera, Paraguay (P. Myers)



*Didelphis aurita*  
Curuguaty, Dept. Canindeyu, Paraguay (P. Myers)



*Didelphis marsupialis*  
Cocha Cashu, Peru



*Philander opossum*  
Cocha Cashu, Peru



*Chironectes minimus*  
Ybycui, Dept. Paraguari, Paraguay (P. Myers)



*Lutreolina crassicaudata* subadult  
Pampas del Heath, P eru



*Lutreolina* sp. juvenile  
Cerro Bufete, Bolivia



*Metachirus nudicaudatus*  
Rio Xingu, Brazil



*Metachirus nudicaudatus*  
Rio Xingu, Brazil