

Parque Nacional Yasuní, Orellana, ECUADOR

PALMAS del YASUNI

1

WEB VERSION

[VERSION DE PRUEBA]

Fotos de R. B. Foster, T. Wachter, & M. Metz. Producido por: R. B. Foster & M. R. Metz, con el apoyo del Andrew Mellon Foundation.

©Botanical Institute, Univ. Aarhus, Denmark and Environmental & Conservation Programs, The Field Museum, Chicago, IL 60605 USA. [RRC@fnnh.org] Rapid Color Guide # 57 version 1.1



1 *Aiphanes ulei*



2 *Astrocaryum chambira*



3 *Astrocaryum chambira*



4 *Astrocaryum (murumuru)*



5 *Astrocaryum (murumuru)*



6 *Attalea butyracea*



7 *Attalea insignis*



8 *Attalea maripa*



9 *Bactris concinna*



10 *Bactris corossilla*



11 *Bactris maraja*



12 *Bactris riparia*



13 *Bactris riparia*



14 *Bactris simplicifrons*



15 *Bactris*



16 *Chamaedorea pinnatifrons*



17 *Chamaedorea pinnatifrons*



18 *Desmoncus giganteus*



19 *Desmoncus mitis*



20 *Euterpe precatória*

PALMS of YASUNI

[TEST VERSION]

WEB VERSION

Photos by R. B. Foster, T. Wachter, & M. Metz. Produced by: R. B. Foster & M. R. Metz, with support from the Andrew Mellon Foundation.
 ©Botanical Institute, Univ. Aarhus, Denmark and Environmental & Conservation Programs, The Field Museum, Chicago, IL 60605 USA. [RRC@fmmh.org] Rapid Color Guide # 57 version 1.1



21 *Geonoma brongniartii*



22 *Geonoma aspidifolia* cf.



23 *Geonoma macrostachys*



24 *Geonoma maxima*



25 *Geonoma (stricta) var. piscicauda*



26 *Geonoma triglochis*



27 *Hyospathe elegans*



28 *Hyospathe elegans*



29 *Iriartea deltoidea*



30 *Iriartea deltoidea*



31 *Mauritia flexuosa*



32 *Mauritia flexuosa*



33 *Oenocarpus bataua*



34 *Oenocarpus mapora*



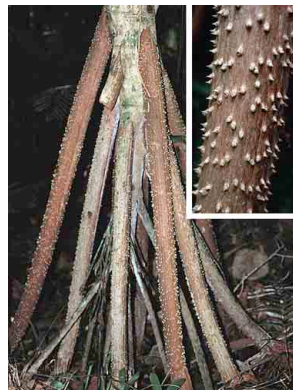
35 *Phytelephas tenuicaulis*



36 *Prestoea schultzeana*



37 *Socratea exorrhiza*



38 *Socratea exorrhiza*



39 *Wettinia maynensis*



40 *Wettinia maynensis*