

Pando, BOLIVIA PLANTAS del TAHUAMANU

Por: Robin B. Foster, Narel Paniagua, Bil Alverson y Julio Rojas

Photos de R. B. Foster & T. S. Wachter. Producido por: R. B. Foster, M. R. Metz, & H. Betz, con el apoyo del Andrew Mellon Foundation.

© Environmental & Conservation Programs, The Field Museum, Chicago, IL 60605 USA. [RRC@fmnh.org] Rapid Color Guide # 54 version 1.2



1 *Aphelandra*
ACANTHACEAE



2 *Aphelandra macrosiphon*
ACANTHACEAE



3 *Aphelandra*
ACANTHACEAE



4 ACANTHACEAE



5 *Astronium graveolens*
ANACARDIACEAE



6 *Spondias mombin*
ANACARDIACEAE



7 *Tapirira guianensis*
ANACARDIACEAE



8 *Anaxagorea crassipetala*
ANNONACEAE



9 *Anaxagorea*
ANNONACEAE



10 *Annona hypoglauca*
ANNONACEAE



11 *Crematosperma*
ANNONACEAE



12 *Duguetia*
ANNONACEAE



13 *Duguetia*
ANNONACEAE



14 *Guatteria*
ANNONACEAE



15 *Oxandra mediocris*
ANNONACEAE



16 *Unonopsis floribunda*
ANNONACEAE



17 *Xylopia cuspidata*
ANNONACEAE



18 *Xylopia ligustrifolia*
ANNONACEAE



19 *Eryngium foetidum*
APIACEAE



20 *Aspidosperma*
APOCYNACEAE

Pando, BOLIVIA PLANTS of TAHUAMANU

By: Robin B. Foster, Narel Paniagua, Bil Alverson, and Julio Rojas

Photos by R. B. Foster & T. S. Wachter. Produced by: R. B. Foster, M. R. Metz, & H. Betz, with support of the Andrew Mellon Foundation.
© Environmental & Conservation Programs, The Field Museum, Chicago, IL 60605 USA. [RRC@fmnh.org] Rapid Color Guide # 54 version 1.2



21 *Himatanthus sucuuba*
APOCYNACEAE



22 *Mandevilla*
APOCYNACEAE



23 *Tabernaemontana*
APOCYNACEAE



24 *Tabernaemontana siphilitica*
APOCYNACEAE



25 APOCYNACEAE



26 *Anthurium clavigerum*
ARACEAE



27 *Anthurium*
ARACEAE



28 *Dieffenbachia*
ARACEAE



29 *Heteropsis*
ARACEAE



30 *Heteropsis*
ARACEAE



31 *Monstera*
ARACEAE



32 *Philodendron ernestii*
ARACEAE



33 *Philodendron tripartitum*
ARACEAE



34 *Philodendron*
ARACEAE



35 *Pistia stratiotes*
ARACEAE



36 *Rhodospatha*
ARACEAE



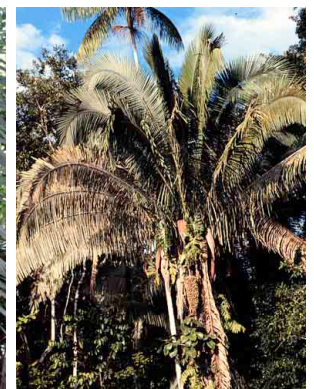
37 *Dendropanax arboreus*
ARALIACEAE



38 *Schefflera morototoni*
ARALIACEAE



39 *Astrocaryum murumuru*
ARECACEAE



40 *Attalea butyracea*
ARECACEAE

Pando, BOLIVIA PLANTAS del TAHUAMANU

Por: Robin B. Foster, Narel Paniagua, Bil Alverson y Julio Rojas

Photos de R. B. Foster & T. S. Wachter. Producido por: R. B. Foster, M. R. Metz, & H. Betz, con el apoyo del Andrew Mellon Foundation.
© Environmental & Conservation Programs, The Field Museum, Chicago, IL 60605 USA. [RRC@fmnh.org] Rapid Color Guide # 54 version 1. 2



41 *Attalea maripa*
ARECACEAE



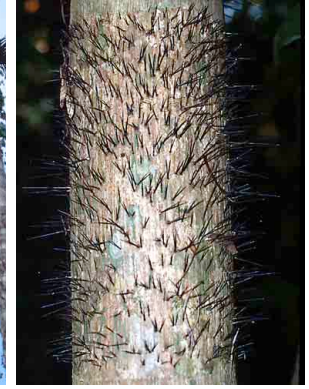
42 *Attalea phalerata*
ARECACEAE



43 *Bactris concinna*
ARECACEAE



44 *Bactris gasipaes*
ARECACEAE



45 *Bactris gasipaes*
ARECACEAE



46 *Bactris hirta*
ARECACEAE



47 *Bactris hirta*
ARECACEAE



48 *Bactris major*
ARECACEAE



49 *Bactris maraja*
ARECACEAE



50 *Bactris riparia*
ARECACEAE



51 *Chamaedorea pinnatifrons*
ARECACEAE



52 *Geonoma deversa*
ARECACEAE



53 *Geonoma deversa*
ARECACEAE



54 *Geonoma stricta*
ARECACEAE



55 *Geonoma*
ARECACEAE



56 *Geonoma*
ARECACEAE



57 *Euterpe precatoria*
ARECACEAE



58 *Hyospathe elegans*
ARECACEAE



59 *Iriartea deltoidea*
ARECACEAE



60 *Iriartea deltoidea*
ARECACEAE

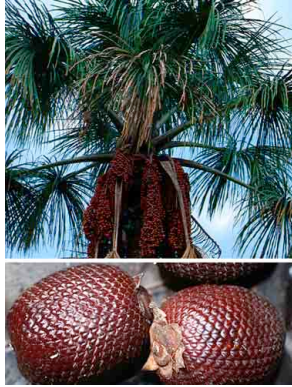
Pando, BOLIVIA
PLANTS of TAHUAMANU

By: Robin B. Foster, Narel Paniagua, Bil Alverson, and Julio Rojas

Photos by R. B. Foster & T. S. Wachter. Produced by: R. B. Foster, M. R. Metz, & H. Betz, with support of the Andrew Mellon Foundation.
 © Environmental & Conservation Programs, The Field Museum, Chicago, IL 60605 USA. [RRC@fmnh.org] Rapid Color Guide # 54 version 1. 2



61 *Iriartella setigera*
 ARECACEAE



62 *Mauritia flexuosa*
 ARECACEAE



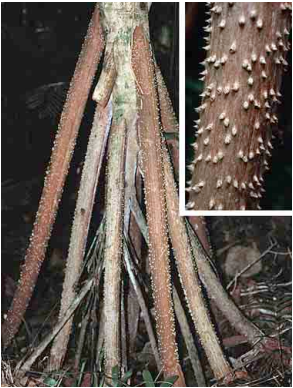
63 *Oenocarpus bataua*
 ARECACEAE



64 *Oenocarpus mapora*
 ARECACEAE



65 *Socratea exorrhiza*
 ARECACEAE



66 *Socratea exorrhiza*
 ARECACEAE



67 *Aristolochia*
 ARISTOLOCHIACEAE



68 *Adenostemma*
 ASTERACEAE



69 *Tessaria integrifolia*
 ASTERACEAE



70 *Vernonia patens*
 ASTERACEAE



71 *Wulffia baccata*
 ASTERACEAE



72 *Jacaranda copaia*
 BIGNONIACEAE



73 *Mansoa parvifolia*
 BIGNONIACEAE



74 *Mussatia "chamairo"*
 BIGNONIACEAE



75 *Pleonotoma*
 BIGNONIACEAE



76 *Tabebuia*
 BIGNONIACEAE



77 BIGNONIACEAE



78 BIGNONIACEAE



79 BIGNONIACEAE



80 *Bixa orellana*
 BIXACEAE

Pando, BOLIVIA PLANTAS del TAHUAMANU

Por: Robin B. Foster, Narel Paniagua, Bil Alverson y Julio Rojas

Photos de R. B. Foster & T. S. Wachter. Producido por: R. B. Foster, M. R. Metz, & H. Betz, con el apoyo del Andrew Mellon Foundation.
© Environmental & Conservation Programs, The Field Museum, Chicago, IL 60605 USA. [RRC@fmnh.org] Rapid Color Guide # 54 version 1.2



81 *Bixa urucurana*
BIXACEAE



82 *Cavanillesia*
BOMBACACEAE



83 *Ceiba pentandra*
BOMBACACEAE



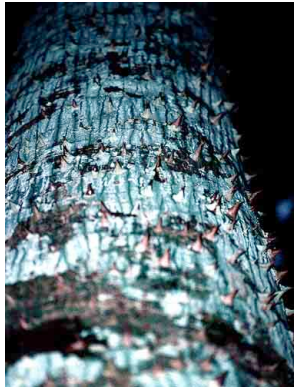
84 *Ceiba pentandra*
BOMBACACEAE



85 *Ceiba samauma*
BOMBACACEAE



86 *Ceiba samauma*
BOMBACACEAE



87 *Ceiba (Chorisia) insignis*
BOMBACACEAE



88 *Ceiba (Chorisia) insignis*
BOMBACACEAE



89 *Matisia bicolor*
BOMBACACEAE



90 *Matisia bicolor*
BOMBACACEAE



91 *Ochroma pyramidata*
BOMBACACEAE



92 *Pachira*
BOMBACACEAE



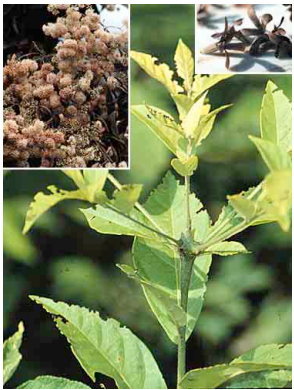
93 *Pseudobombax septenatum*
BOMBACACEAE



94 *Quararibea amazonica*
BOMBACACEAE



95 *Quararibea wittii*
BOMBACACEAE



96 *Cordia alliodora*
BORAGINACEAE



97 *Cordia nodosa*
BORAGINACEAE



98 *Cordia*
BORAGINACEAE



99 *Tillandsia*
BROMELIACEAE



100 *Protium sagotianum*
BURSERACEAE

Pando, BOLIVIA PLANTS of TAHUAMANU

By: Robin B. Foster, Narel Paniagua, Bil Alverson, and Julio Rojas

Photos by R. B. Foster & T. S. Wachter. Produced by: R. B. Foster, M. R. Metz, & H. Betz, with support of the Andrew Mellon Foundation.
© Environmental & Conservation Programs, The Field Museum, Chicago, IL 60605 USA. [RRC@fmnh.org] Rapid Color Guide # 54 version 1.2



101 *Protium*
BURSERACEAE



102 *Tetragastris panamensis*
BURSERACEAE



103 *Tetragastris panamensis*
BURSERACEAE



104 *Capparis*
CAPPARIDACEAE



105 *Capparis*
CAPPARIDACEAE



106 *Carica microcarpa*
CARICACEAE



107 *Jacaratia digitata*
CARICACEAE



108 *Jacaratia digitata*
CARICACEAE



109 *Cecropia ficifolia*
CECROPIACEAE



110 *Cecropia latiloba*
CECROPIACEAE



111 *Cecropia membranacea*
CECROPIACEAE



112 *Cecropia polystachya*
CECROPIACEAE



113 *Cecropia sciadophylla*
CECROPIACEAE



114 *Cecropia*
CECROPIACEAE



115 *Pourouma cecropiifolia*
CECROPIACEAE



116 *Pourouma minor*
CECROPIACEAE



117 *Hirtella racemosa*
CHRYSOBALANACEAE



118 *Hirtella triandra*
CHRYSOBALANACEAE



119 *Hirtella*
CHRYSOBALANACEAE



120 *Hirtella*
CHRYSOBALANACEAE

Pando, BOLIVIA PLANTAS del TAHUAMANU

Por: Robin B. Foster, Narel Paniagua, Bil Alverson y Julio Rojas

Photos de R. B. Foster & T. S. Wachter. Producido por: R. B. Foster, M. R. Metz, & H. Betz, con el apoyo del Andrew Mellon Foundation.

© Environmental & Conservation Programs, The Field Museum, Chicago, IL 60605 USA. [RRC@fmnh.org] Rapid Color Guide # 54 version 1.2



121 *Licania britteniana*
CHRYSOBALANACEAE



122 *Licania*
CHRYSOBALANACEAE



123 *Licania*
CHRYSOBALANACEAE



124 *Calophyllum brasiliense*
CLUSIACEAE



125 *Chyrochlamys ulei* (=weberbaueri)
CLUSIACEAE



126 *Clusia*
CLUSIACEAE



127 *Garcinia madruno*
CLUSIACEAE



128 *Garcinia*
CLUSIACEAE



129 *Symphonia globulifera*
CLUSIACEAE



130 *Vismia baccifera*
CLUSIACEAE



131 *Vismia*
CLUSIACEAE



132 *Combretum laxum*
COMBRETACEAE



133 *Terminalia amazonia*
COMBRETACEAE



134 *Terminalia oblonga*
COMBRETACEAE



135 *Dichorisandra hexandra*
COMMEINACEAE



136 *Geogenanthus poeppigii*
COMMELINACEAE



137 *Tradescantia zanonii*
COMMELINACEAE



138 *Connarus*
CONNARACEAE



139 *Ipomoea*
CONVOLVULACEAE



140 *Costus arabicus*
COSTACEAE

Pando, BOLIVIA PLANTS of TAHUAMANU

By: Robin B. Foster, Narel Paniagua, Bil Alverson, and Julio Rojas

Photos by R. B. Foster & T. S. Wachter. Produced by: R. B. Foster, M. R. Metz, & H. Betz, with support of the Andrew Mellon Foundation.
© Environmental & Conservation Programs, The Field Museum, Chicago, IL 60605 USA. [RRC@fmnh.org] Rapid Color Guide # 54 version 1.2



141 *Costus scaber*
COSTACEAE



142 *Costus subseissilis*
COSTACEAE



143 *Costus*
COSTACEAE



144 *Dimerocostus strobilaceus*
COSTACEAE



145 *Fevillea cordifolia*
CUCURBITACEAE



146 *Gurania*
CUCURBITACEAE



147 *Momordica charantia*
CUCURBITACEAE



148 *Zamia*
CYCADACEAE



149 *Cyclanthus bipartitus*
CYCLANTHACEAE



150 *Scleria secans*
CYPERACEAE



151 *Tapura juruana*
DICHPETALACEAE



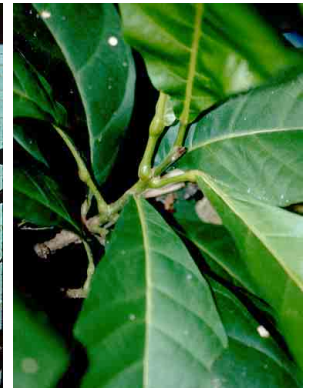
152 *Davilla*
DILLENIACEAE



153 *Dioscorea*
DIOSCOREACEAE



154 *Diospyros*
EBENACEAE



155 *Sloanea guianensis*
ELAEOCARPACEAE



156 *Sloanea*
ELAEOCARPACEAE



157 *Erythroxylum*
ERYTHROXYLACEAE



158 *Acalypha diversifolia*
EUPHORBACEAE



159 *Alchornea castaneifolia*
EUPHORBACEAE



160 *Alchornea glandulosa*
EUPHORBACEAE

Pando, BOLIVIA PLANTAS del TAHUAMANU

Por: Robin B. Foster, Narel Paniagua, Bil Alverson y Julio Rojas

Photos de R. B. Foster & T. S. Wachter. Producido por: R. B. Foster, M. R. Metz, & H. Betz, con el apoyo del Andrew Mellon Foundation.
© Environmental & Conservation Programs, The Field Museum, Chicago, IL 60605 USA. [RRC@fmnh.org] Rapid Color Guide # 54 version 1.2



161 *Alchornea triplinervis*
EUPHORBIACEAE



162 *Aparisthium cordatum*
EUPHORBIACEAE



163 *Drypetes gentryi*
EUPHORBIACEAE



164 *Hevea brasiliensis*
EUPHORBIACEAE



165 *Hyeronima alchorneoides*
EUPHORBIACEAE



166 *Mabea angustifolia*
EUPHORBIACEAE



167 *Manihot*
EUPHORBIACEAE



168 *Margaritaria nobilis*
EUPHORBIACEAE



169 *Omphalea diandra*
EUPHORBIACEAE



170 *Pausandra trianae*
EUPHORBIACEAE



171 *Plukenetia*
EUPHORBIACEAE



172 *Sapium marmieri*
EUPHORBIACEAE



173 *Sapium*
EUPHORBIACEAE



174 *Glycydendron amazonicum*
EUPHORBIACEAE



175 *Acacia lorentensis*
FABACEAE



176 *Acacia*
FABACEAE



177 *Amburana cearensis*
FABACEAE



178 *Apuleia leiocarpa*
FABACEAE



179 *Bauhinia guianensis*
FABACEAE



180 *Copaifera reticulata*
FABACEAE

By: Robin B. Foster, Narel Paniagua, Bil Alverson, and Julio Rojas

Photos by R. B. Foster & T. S. Wachter. Produced by: R. B. Foster, M. R. Metz, & H. Betz, with support of the Andrew Mellon Foundation.

© Environmental & Conservation Programs, The Field Museum, Chicago, IL 60605 USA. [RRC@fmnh.org] Rapid Color Guide # 54 version 1.2 2000



181 *Dalbergia*
FABACEAE



182 *Desmodium axillare*
FABACEAE



183 *Dialium guianense*
FABACEAE



184 *Dipteryx micrantha*
FABACEAE



185 *Enterolobium*
FABACEAE



186 *Erythrina*
FABACEAE



187 *Hymenaea courbaril*
FABACEAE



188 *Inga acreana*
FABACEAE



189 *Inga alba*
FABACEAE



190 *Inga capitata*
FABACEAE



191 *Inga marginata*
FABACEAE



192 *Inga nobilis*
FABACEAE



193 *Inga oerstediana*
FABACEAE



194 *Inga ruiziana*
FABACEAE



195 *Inga stipulacea*
FABACEAE



196 *Inga tenuistipula*
FABACEAE



197 *Inga thibaudiana*
FABACEAE



198 *Inga*
FABACEAE



199 *Inga*
FABACEAE



200 *Inga*
FABACEAE

Pando, BOLIVIA PLANTAS del TAHUAMANU

Por: Robin B. Foster, Narel Paniagua, Bil Alverson y Julio Rojas

Photos de R. B. Foster & T. S. Wachter. Producido por: R. B. Foster, M. R. Metz, & H. Betz, con el apoyo del Andrew Mellon Foundation.
© Environmental & Conservation Programs, The Field Museum, Chicago, IL 60605 USA. [RRC@fmnh.org] Rapid Color Guide # 54 version 1. 2



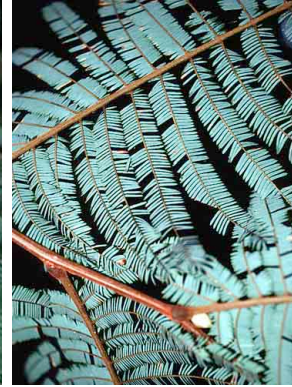
201 *Machaerium kegelii*
FABACEAE



202 *Macrolobium acaciifolium*
FABACEAE



203 *Parkia multijuga*
FABACEAE



204 *Parkia pendula*
FABACEAE



205 *Piptadenia*
FABACEAE



206 *Piptadenia*
FABACEAE



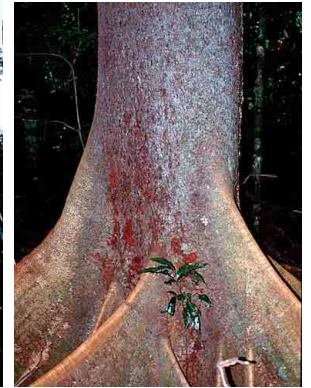
207 *Platypodium elegans*
FABACEAE



208 *Poeppigia*
FABACEAE



209 *Schizolobium parahyba*
FABACEAE



210 *Schizolobium parahyba*
FABACEAE



211 *Senna reticulata*
FABACEAE



212 *Senna silvestris*
FABACEAE



213 *Senna*
FABACEAE



214 *Stryphnodendron*
FABACEAE



215 *Tachigali vasquezii*
FABACEAE



216 *Tachigali*
FABACEAE



217 *Tachigali*
FABACEAE



218 *Tachigali*
FABACEAE



219 *Tachigali*
FABACEAE



220 *Tephrosia*
FABACEAE

By: Robin B. Foster, Narel Paniagua, Bil Alverson, and Julio Rojas

Photos by R. B. Foster & T. S. Wachter. Produced by: R. B. Foster, M. R. Metz, & H. Betz, with support of the Andrew Mellon Foundation.
© Environmental & Conservation Programs, The Field Museum, Chicago, IL 60605 USA. [RRC@fmnh.org] Rapid Color Guide # 54 version 1. 2



221 *Vataireopsis*
FABACEAE



222 *Zygia*
FABACEAE



223 FABACEAE



224 FABACEAE



225 FABACEAE



226 FABACEAE



227 FABACEAE



228 *Casearia aculeata*
FLACOURTIACEAE



229 *Lacistema aggregatum*
FLACOURTIACEAE



230 *Lacistema*
FLACOURTIACEAE



231 *Laetia procerata*
FLACOURTIACEAE



232 *Lunania parviflora*
FLACOURTIACEAE



233 *Prockia crucis*
FLACOURTIACEAE



234 *Xylosma*
FLACOURTIACEAE



235 *Drymonia semicordata*
GESNERIACEAE



236 GESNERIACEAE



237 *Heliconia densiflora*
HELICONIACEAE



238 *Heliconia episcopalis*
HELICONIACEAE



239 *Heliconia marginata*
HELICONIACEAE



240 *Heliconia metallica*
HELICONIACEAE

Pando, BOLIVIA PLANTAS del TAHUAMANU

Por: Robin B. Foster, Narel Paniagua, Bil Alverson y Julio Rojas

Photos de R. B. Foster & T. S. Wachter. Producido por: R. B. Foster, M. R. Metz, & H. Betz, con el apoyo del Andrew Mellon Foundation.
© Environmental & Conservation Programs, The Field Museum, Chicago, IL 60605 USA. [RRC@fmnh.org] Rapid Color Guide # 54 version 1. 2



241 *Heliconia psittacorum*
HELICONIACEAE



242 *Heliconia psittacorum*
HELICONIACEAE



243 *Heliconia rostrata*
HELICONIACEAE



244 *Sparattanthelium*
HERNANDIACEAE



245 *Sparattanthelium*
HERNANDIACEAE



246 *Anthodon decussatum*
HIPPOCRATEACEAE



247 *Salacia*
HIPPOCRATEACEAE



248 *Ocotea guianensis*
LAURACEAE



249 LAURACEAE



250 LAURACEAE



251 LAURACEAE



252 LAURACEAE



253 *Bertholletia excelsa*
LECYTHIDACEAE



254 *Bertholletia excelsa*
LECYTHIDACEAE



255 *Bertholletia excelsa*
LECYTHIDACEAE



256 *Cariniana*
LECYTHIDACEAE



257 *Couratari guianensis*
LECYTHIDACEAE



258 *Couratari macrosperma*
LECYTHIDACEAE



259 *Couratari macrosperma*
LECYTHIDACEAE



260 *Couroupita guianensis*
LECYTHIDACEAE

By: Robin B. Foster, Narel Paniagua, Bil Alverson, and Julio Rojas

Photos by R. B. Foster & T. S. Wachter. Produced by: R. B. Foster, M. R. Metz, & H. Betz, with support of the Andrew Mellon Foundation.
© Environmental & Conservation Programs, The Field Museum, Chicago, IL 60605 USA. [RRC@fmnh.org] Rapid Color Guide # 54 version 1. 2



261 *Eschweilera*
LECYTHIDACEAE



262 *Gustavia hexapetala*
LECYTHIDACEAE



263 *Roucheria*
LINACEAE



264 *Strychnos*
LOGANIACEAE



265 *Adenaria floribunda*
LYTHRACEAE



266 *Lafoensia*
LYTHRACEAE



267 *Physocalymma scaberrimum*
LYTHRACEAE



268 *Bunchosia*
MALPIGHIACEAE



269 *Mascagnia*
MALPIGHIACEAE



270 MALPIGHIACEAE



271 MALPIGHIACEAE



272 *Gossypium barbadense*
MALVACEAE



273 *Calathea micans*
MARANTACEAE



274 *Calathea*
MARANTACEAE



275 *Calathea*
MARANTACEAE



276 *Calathea*
MARANTACEAE



277 *Calathea*
MARANTACEAE



278 *Ischnosiphon*
MARANTACEAE



279 *Ischnosiphon*
MARANTACEAE



280 *Monotagma*
MARANTACEAE

Pando, BOLIVIA PLANTAS del TAHUAMANU

Por: Robin B. Foster, Narel Paniagua, Bil Alverson y Julio Rojas

Photos de R. B. Foster & T. S. Wachter. Producido por: R. B. Foster, M. R. Metz, & H. Betz, con el apoyo del Andrew Mellon Foundation.
© Environmental & Conservation Programs, The Field Museum, Chicago, IL 60605 USA. [RRC@fmnh.org] Rapid Color Guide # 54 version 1. 2



281 *Loreya strigosa*
MELASTOMATACEAE



282 *Miconia bubalina*
MELASTOMATACEAE



283 *Miconia nervosa*
MELASTOMATACEAE



284 *Miconia tomentosa*
MELASTOMATACEAE



285 *Miconia*
MELASTOMATACEAE



286 *Mouriri myrtilloides*
MELASTOMATACEAE



287 *Tococa guianensis*
MELASTOMATACEAE



288 *Tococa quadrialata*
MELASTOMATACEAE



289 *Cabralea cangerana*
MELIACEAE



290 *Cedrela fissilis*
MELIACEAE



291 *Cedrela odorata*
MELIACEAE



292 *Guarea goma*
MELIACEAE



293 *Guarea grandifolia*
MELIACEAE



294 *Guarea guidonia*
MELIACEAE



295 *Guarea kunthiana*
MELIACEAE



296 *Guarea*
MELIACEAE



297 *Swietenia macrophylla*
MELIACEAE



298 *Trichilia pallida*
MELIACEAE



299 *Trichilia pleeana*
MELIACEAE



300 *Trichilia poeppigiana*
MELIACEAE

By: Robin B. Foster, Narel Paniagua, Bil Alverson, and Julio Rojas

Photos by R. B. Foster & T. S. Wachter. Produced by: R. B. Foster, M. R. Metz, & H. Betz, with support of the Andrew Mellon Foundation.
© Environmental & Conservation Programs, The Field Museum, Chicago, IL 60605 USA. [RRC@fmnh.org] Rapid Color Guide # 54 version 1. 2



301 *Trichilia quadrijuga*
MELIACEAE



302 *Trichilia septentrionalis*
MELIACEAE



303 *Trichilia*
MELIACEAE



304 *Abuta grandifolia*
MENISPERMACEAE



305 *Cissampelos*
MENISPERMACEAE



306 *Curarea toxicofera*
MENISPERMACEAE



307 *Odontocarya arifolia*
MENISPERMACEAE



308 *Mollinedia killipii*
MONIMIACEAE



309 *Siparuna cervicornis*
MONIMIACEAE



310 *Siparuna decipiens*
MONIMIACEAE



311 *Siparuna thecaphora*
MONIMIACEAE



312 *Siparuna*
MONIMIACEAE



313 *Siparuna*
MONIMIACEAE



314 *Brosimum alicastrum*
MORACEAE



315 *Brosimum guianense*
MORACEAE



316 *Brosimum lactescens*
MORACEAE



317 *Castilla ulei*
MORACEAE



318 *Clarisia biflora*
MORACEAE



319 *Clarisia racemosa*
MORACEAE



320 *Ficus aripuanensis*
MORACEAE

Pando, BOLIVIA PLANTAS del TAHUAMANU

Por: Robin B. Foster, Narel Paniagua, Bil Alverson y Julio Rojas

Photos de R. B. Foster & T. S. Wachter. Producido por: R. B. Foster, M. R. Metz, & H. Betz, con el apoyo del Andrew Mellon Foundation.
© Environmental & Conservation Programs, The Field Museum, Chicago, IL 60605 USA. [RRC@fmnh.org] Rapid Color Guide # 54 version 1. 2



321 *Ficus boliviana*
MORACEAE



322 *Ficus brevibracteata*
MORACEAE



323 *Ficus caballina*
MORACEAE



324 *Ficus coerulescens* [killippii]
MORACEAE



325 *Ficus gommeleira*
MORACEAE



326 *Ficus insipida*
MORACEAE



327 *Ficus juruensis*
MORACEAE



328 *Ficus maxima*
MORACEAE



329 *Ficus nymphiifolia*
MORACEAE



330 *Ficus paraensis*
MORACEAE



331 *Ficus pertusa*
MORACEAE



332 *Ficus piresiana*
MORACEAE



333 *Ficus schultesii*
MORACEAE



334 *Ficus trigona*
MORACEAE



335 *Ficus ypsiloplebia*
MORACEAE



336 *Ficus*
MORACEAE



337 *Ficus*
MORACEAE



338 *Helicostylis tomentosa*
MORACEAE



339 *Maclura tinctoria*
MORACEAE



340 *Maquira guianensis*
MORACEAE

By: Robin B. Foster, Narel Paniagua, Bil Alverson, and Julio Rojas

Photos by R. B. Foster & T. S. Wachter. Produced by: R. B. Foster, M. R. Metz, & H. Betz, with support of the Andrew Mellon Foundation.
© Environmental & Conservation Programs, The Field Museum, Chicago, IL 60605 USA. [RRC@fmnh.org] Rapid Color Guide # 54 version 1. 2



341 *Naucleopsis glabrata*
MORACEAE



342 *Naucleopsis*
MORACEAE



343 *Perebea xanthochyma*
MORACEAE



344 *Perebea*
MORACEAE



345 *Pseudolmedia laevigata*
MORACEAE



346 *Pseudolmedia laevis*
MORACEAE



347 *Pseudolmedia macrophylla*
MORACEAE



348 *Sorocea guillemianina*
MORACEAE



349 *Sorocea*
MORACEAE



350 *Sorocea*
MORACEAE



351 *Iryanthera juruensis*
MYRISTICACEAE



352 *Iryanthera juruensis*
MYRISTICACEAE



353 *Virola calophylla*
MYRISTICACEAE



354 *Virola flexuosa*
MYRISTICACEAE



355 *Virola sebifera*
MYRISTICACEAE



356 *Virola*
MYRISTICACEAE



357 *Virola*
MYRISTICACEAE



358 *Ardisia*
MYRSINACEAE



359 *Calyptranthes densiflora*
MYRTACEAE



360 *Calyptranthes*
MYRTACEAE

Pando, BOLIVIA PLANTAS del TAHUAMANU

Por: Robin B. Foster, Narel Paniagua, Bil Alverson y Julio Rojas

Photos de R. B. Foster & T. S. Wachter. Producido por: R. B. Foster, M. R. Metz, & H. Betz, con el apoyo del Andrew Mellon Foundation.
© Environmental & Conservation Programs, The Field Museum, Chicago, IL 60605 USA. [RRC@fmnh.org] Rapid Color Guide # 54 version 1. 2



361 *Eugenia*
MYRTACEAE



362 *Eugenia*
MYRTACEAE



363 *Myrcia*
MYRTACEAE



364 *Myrciaria*
MYRTACEAE



365 *Neea*
NYCTAGINACEAE



366 *Neea*
NYCTAGINACEAE



367 *Neea*
NYCTAGINACEAE



368 *Ouratea*
OCHNACEAE



369 *Ouratea*
OCHNACEAE



370 *Ouratea*
OCHNACEAE



371 *Ouratea*
OCHNACEAE



372 *Heisteria*
OCHNACEAE



373 *Miquartia guianensis*
OLACACEAE



374 *Passiflora auriculata*
PASSIFLORACEAE



375 *Passiflora*
PASSIFLORACEAE



376 *Passiflora*
PASSIFLORACEAE



377 *Passiflora*
PASSIFLORACEAE



378 *Passiflora*
PASSIFLORACEAE



379 *Passiflora*
PASSIFLORACEAE



380 *Gallsia integrifolia*
PHYTOIACCACEAE

By: Robin B. Foster, Narel Paniagua, Bil Alverson, and Julio Rojas

Photos by R. B. Foster & T. S. Wachter. Produced by: R. B. Foster, M. R. Metz, & H. Betz, with support of the Andrew Mellon Foundation.
© Environmental & Conservation Programs, The Field Museum, Chicago, IL 60605 USA. [RRC@fmnh.org] Rapid Color Guide # 54 version 1. 2



381 *Phytolacca rivinoides*
PHYTOLACCAEAE



382 *Peperomia cardenasii*
PIPERACEAE



383 *Peperomia macrostachya*
PIPERACEAE



384 *Peperomia*
PIPERACEAE



385 *Piper aduncum*
PIPERACEAE



386 *Piper anonnifolium*
PIPERACEAE



387 *Piper arboreum*
PIPERACEAE



388 *Piper callosum*
PIPERACEAE



389 *Piper laevigatum*
PIPERACEAE



390 *Piper obliquum*
PIPERACEAE



391 *Piper reticulatum*
PIPERACEAE



392 *Piper*
PIPERACEAE



393 *Piper*
PIPERACEAE



394 *Piper*
PIPERACEAE



395 *Piper*
PIPERACEAE



396 *Guadua*
POACEAE



397 *Guadua*
POACEAE



398 *Gynerium sagittatum*
POACEAE



399 *Olyra*
POACEAE



400 *Pharus latifolius*
POACEAE

Pando, BOLIVIA PLANTAS del TAHUAMANU

Por: Robin B. Foster, Narel Paniagua, Bil Alverson y Julio Rojas

Photos de R. B. Foster & T. S. Wachter. Producido por: R. B. Foster, M. R. Metz, & H. Betz, con el apoyo del Andrew Mellon Foundation.
© Environmental & Conservation Programs, The Field Museum, Chicago, IL 60605 USA. [RRC@fmnh.org] Rapid Color Guide # 54 version 1.2



401 *Polygala gigantea*
POLYGALACEAE



402 *Cocoloba densifrons*
POLYGONACEAE



403 *Cocoloba*
POLYGONACEAE



404 *Talinum*
PORTULACACEAE



405 *Roupala montana*
PROTEACEAE



406 *Lacunaria*
QUIINACEAE



407 *Quiina*
QUIINACEAE



408 *Colubrina glandulosa*
RHAMNACEAE



409 *Gouania*
RHAMNACEAE



410 *Gouania*
RHAMNACEAE



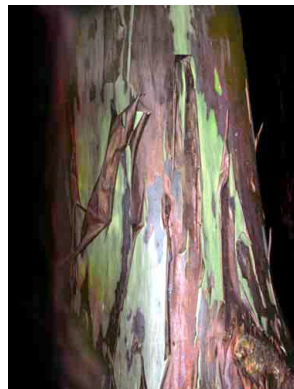
411 *Alseis*
RUBIACEAE



412 *Amaioua*
RUBIACEAE



413 *Calycophyllum megistocaulum*
RUBIACEAE



414 *Calycophyllum spruceanum*
RUBIACEAE



415 *Capirona decorticans*
RUBIACEAE



416 *Capirona decorticans*
RUBIACEAE



417 *Chomelia melanioides*
RUBIACEAE



418 *Coussarea racemosa*
RUBIACEAE



419 *Genipa americana*
RUBIACEAE



420 *Macrocnemum roseum*
RUBIACEAE

By: Robin B. Foster, Narel Paniagua, Bil Alverson, and Julio Rojas

Photos by R. B. Foster & T. S. Wachter. Produced by: R. B. Foster, M. R. Metz, & H. Betz, with support of the Andrew Mellon Foundation.
 © Environmental & Conservation Programs, The Field Museum, Chicago, IL 60605 USA. [RRC@fmnh.org] Rapid Color Guide # 54 version 1.2



421 *Palicourea corymbifera*
 RUBIACEAE



422 *Palicourea guianensis*
 RUBIACEAE



423 *Palicourea mansoana*
 RUBIACEAE



424 *Palicourea plowmanii*
 RUBIACEAE



425 *Palicourea punicea*
 RUBIACEAE



426 *Posoqueria latifolia*
 RUBIACEAE



427 *Psychotria poeppigiana*
 RUBIACEAE



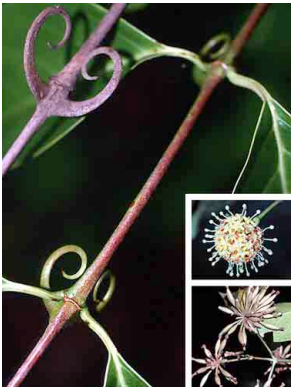
428 *Psychotria viridis*
 RUBIACEAE



429 *Psychotria*
 RUBIACEAE



430 *Psychotria*
 RUBIACEAE



431 *Uncaria guianensis*
 RUBIACEAE



432 *Conchocarpus transitionalis*
 RUTACEAE



433 *Esenbeckia almawillia*
 RUTACEAE



434 *Metradorea flavida*
 RUTACEAE



435 *Zanthoxylum ekmanii*
 RUTACEAE



436
 RUTACEAE



437
 RUTACEAE



438 *Salix humboldtiana*
 SALICACEAE



439 *Allophylus*
 SAPINDACEAE



440 *Paullinia*
 SAPINDACEAE

Pando, BOLIVIA PLANTAS del TAHUAMANU

Por: Robin B. Foster, Narel Paniagua, Bil Alverson y Julio Rojas

Photos de R. B. Foster & T. S. Wachter. Producido por: R. B. Foster, M. R. Metz, & H. Betz, con el apoyo del Andrew Mellon Foundation.
© Environmental & Conservation Programs, The Field Museum, Chicago, IL 60605 USA. [RRC@fmnh.org] Rapid Color Guide # 54 version 1.2



441 SAPINDACEAE



442 *Chrysophyllum cainito*
SAPOTACEAE



443 *Manilkara inundata*
SAPOTACEAE



444 *Micropholis venulosa*
SAPOTACEAE



445 *Pouteria cainito*
SAPOTACEAE



446 *Pouteria*
SAPOTACEAE



447 *Pouteria*
SAPOTACEAE



448 *Basistemon*
SCROPHULARIACEAE



449 *Markea*
SOLANACEAE



450 *Solanum*
SOLANACEAE



451 *Solanum*
SOLANACEAE



452 *Turpinia occidentalis*
STAPHYLEACEAE



453 *Byttneria pescapraeifolia*
STERCULIACEAE



454 *Guazuma crinita*
STERCULIACEAE



455 *Herrania*
STERCULIACEAE



456 *Pterygota amazonica*
STERCULIACEAE



457 *Pterygota amazonica*
STERCULIACEAE



458 *Pterygota amazonica*
STERCULIACEAE



459 *Sterculia apetala*
STERCULIACEAE



460 *Sterculia*
STERCULIACEAE

By: Robin B. Foster, Narel Paniagua, Bil Alverson, and Julio Rojas

Photos by R. B. Foster & T. S. Wachter. Produced by: R. B. Foster, M. R. Metz, & H. Betz, with support of the Andrew Mellon Foundation.
© Environmental & Conservation Programs, The Field Museum, Chicago, IL 60605 USA. [RRC@fmnh.org] Rapid Color Guide # 54 version 1.2



461 *Theobroma bicolor*
STERCULIACEAE



462 *Theobroma bicolor*
STERCULIACEAE



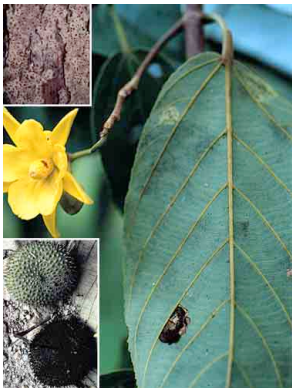
463 *Theobroma cacao*
STERCULIACEAE



464 *Phenakospermum guyanense*
STRELITZIACEAE



465 *Clavija*
THEOPHRASTACEAE



466 *Apeiba aspera*
TILIACEAE



467 *Apeiba tibourbou*
TILIACEAE



468 *Luehea cymulosa*
TILIACEAE



469 *Luehea*
TILIACEAE



470 *Mollia sphaerocarpa*
TILIACEAE



471 *Muntingia calabura*
TILIACEAE



472 *Celtis iguanea*
ULMACEAE



473 *Celtis schipii*
ULMACEAE



474 *Trema micrantha*
ULMACEAE



475 *Ureia baccifera*
URTICACEAE



476 *Ureia caracasana*
URTICACEAE



477 *Aegiphila*
VERBENACEAE



478 *Lantana*
VERBENACEAE



479 *Vitex triflora*
VERBENACEAE



480 *Vitex*
VERBENACEAE

Pando, BOLIVIA PLANTAS del TAHUAMANU

Por: Robin B. Foster, Narel Paniagua, Bil Alverson y Julio Rojas

Photos de R. B. Foster & T. S. Wachter. Producido por: R. B. Foster, M. R. Metz, & H. Betz, con el apoyo del Andrew Mellon Foundation.
© Environmental & Conservation Programs, The Field Museum, Chicago, IL 60605 USA. [RRC@fmnh.org] Rapid Color Guide # 54 version 1.2



481 *Leonia crassa*
VIOLACEAE



482 *Leonia glyccarpa*
VIOLACEAE



483 *Rinorea lindeni*
VIOLACEAE



484 *Rinorea*
VIOLACEAE



485 *Erisma uncinata*
VOCHYSIACEAE



486 *Adiantum*
PTERIDOPHYTA



487 *Cyathea*
PTERIDOPHYTA



488 *Cyathea*
PTERIDOPHYTA



489 *Cyclopeltis semicordata*
PTERIDOPHYTA



490 *Danaea*
PTERIDOPHYTA



491 *Lomariopsis japurensis*
PTERIDOPHYTA



492 *Pityrogramma calomelanos*
PTERIDOPHYTA



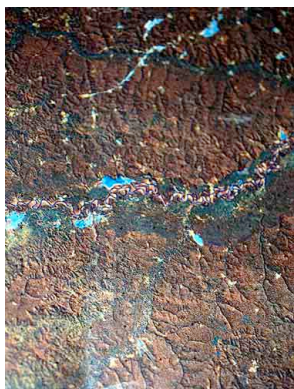
493 *Polybotrya*
PTERIDOPHYTA



494 *Selaginella exaltata*
PTERIDOPHYTA



495 *Thelypteris macrophylla*
PTERIDOPHYTA



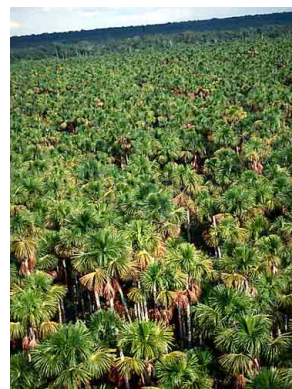
496 Rio Tahuamanu
(centro, izquierda a la derecha)



497 Centro de Investigacion
San Sebastian



498 Succession, Rio Tahuamanu
(Tessaria, Gynerium, Cecropia)



499 Pantano de Mauritia
("palma real", "aguaje", "buriti")



500 "Sartenjal" con Vochysia