

# Isla Barro Colorado, Panamá

## TREPADORAS LLAMATIVAS

Robin Foster, Brenda Lin, Margaret Metz, Tyana Wachter

Fotos de R. B. Foster & T. S. Wachter; M. Metz. Producido por: R. B. Foster, B. B. Lin, M. R. Metz, con el apoyo del Andrew Mellon Foundation y STRI.

© Environ. & Conservation Programs, The Field Museum, Chicago, IL 60605 USA. [www.fmnh.org/plantguides] [RRC@fmnh.org] Rapid Color Guide # 25 version 1.2



1 *Prestonia portobellensis*  
APOCYNACEAE



2 *Rhabdadenia biflora*  
APOCYNACEAE



3 *Desmoncus orthacanthos*  
ARECACEAE



4 *Aristolochia cordiflora*  
ARISTOLOCHIACEAE



5 *Aristolochia pilosa*  
ARISTOLOCHIACEAE



6 *Anemopaegma chrysoleucum*  
BIGNONIACEAE



7 *Arrabidaea patellifera*  
BIGNONIACEAE



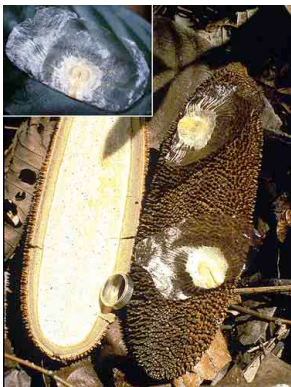
8 *Cydista aequinoctialis*  
BIGNONIACEAE



9 *Paragonia pyramidata*  
BIGNONIACEAE



10 *Phryganocydia corymbosa*  
BIGNONIACEAE



11 *Pithecoctenium crucigerum*  
BIGNONIACEAE



12 *Combretum fruticosum*  
COMBRETACEAE



13 *Ipomoea*  
CONVOLVULACEAE



14 *Maripa panamensis*  
CONVOLVULACEAE



15 *Gurania tubulosa*  
CUCURBITACEAE



16 *Momordica charantia*  
CUCURBITACEAE



17 *Davilla nitida*  
DILLENIACEAE



18 *Doliocarpus olivaceus*  
DILLENIACEAE



19 *Tetracera portobellensis*  
DILLENIACEAE



20 *Bauhinia guianensis*  
FABACEAE



# Barro Colorado Island, Panamá

## CONSPICUOUS CLIMBERS

Robin Foster, Brenda Lin, Margaret Metz, Tyana Wachter

Photos by R. Foster & T. Wachter; M. Metz. Produced by: R. B. Foster, B. B. Lin, M. R. Metz, with support of the Andrew Mellon Foundation & STRI.

© Environ. & Conservation Programs, The Field Museum, Chicago, IL 60605 USA. [www.fmn.org/plantguides] [RRC@fmn.org] Rapid Color Guide # 25 version 1.2



21 *Centrosema molle*  
FABACEAE



22 *Dalbergia monetaria*  
FABACEAE



23 *Entada monostachya*  
FABACEAE



24 *Entada polystachya*  
FABACEAE



25 *Gnetum leyboldii*  
GNETACEAE



26 *Anthodon panamense*  
HIPPOCRATAEAE



27 *Strychnos toxifera*  
LOGANIACEAE



28 *Mascagnia hippocrateoides*  
MALPIGHACEAE



29 *Stigmaphyllon*  
MALPIGHACEAE



30 *Souroubea sympetala*  
MARCGRAVIACEAE



31 *Chondrodendron tomentosum*  
MENISPERMACEAE



32 *Passiflora coriacea*  
PASSIFLORACEAE



33 *Passiflora vitifolia*  
PASSIFLORACEAE



34 *Gouania polygama*  
RHAMNACEAE



35 *Uncaria tomentosa*  
RUBIACEAE



36 *Paullinia turbacensis*  
SAPINDACEAE



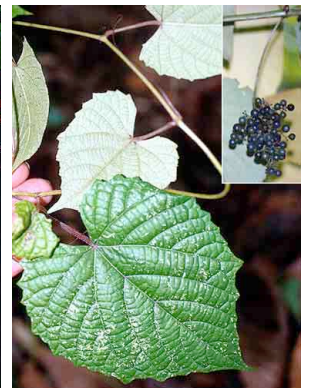
37 *Serjania*  
SAPINDACEAE



38 *Petrea volubilis*  
VERBENACEAE



39 *Cissus erosa*  
VITACEAE



40 *Vitis tiliifolia*  
VITACEAE