

Bosque Húmedo de América Tropical

Plantas Leñosas ESPINOSAS

Robin Foster, Brenda Lin, Margaret Metz, Tyana Wachter

Fotos de: R. B. Foster & T. S. Wachter. Producido por: R. B. Foster, B. B. Lin, M. R. Metz, con el apoyo del Andrew Mellon Foundation.

© Environmental & Conservation Programs, The Field Museum, Chicago, IL 60605 USA. [RRC@fmnh.org] Rapid Color Guide # 23 versión 1.4



1 *Aiphanes*
ARECACEAE



2 *Astrocaryum chambira*
ARECACEAE



3 *Astrocaryum standleyanum*
ARECACEAE



4 *Bactris maraja*
ARECACEAE



5 *Bactris glaucescens*
ARECACEAE



6 *Cryosophila stauracantha*
ARECACEAE



7 *Desmoncus orthacanthos*
ARECACEAE



8 *Barnadesia parviflora*
ASTERACEAE



9 *Ceiba pentandra* (juv.)
BOMBACACEAE



10 *Chorisia speciosa*
BOMBACACEAE



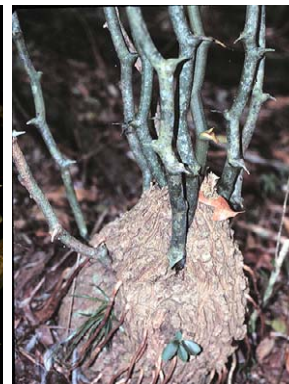
11 *Pachira quinata* (juv.)
BOMBACACEAE



12 *Pereskiaopsis aquosa*
CACTACEAE



13 *Jacaratia digitata*
CARICACEAE



14 *Dioscorea*
DIOSCOREACEAE



15 *Hura crepitans*
EUPHORBIACEAE



16 *Acacia*
FABACEAE



17 *Acacia collinsii*
FABACEAE



18 *Erythrina*
FABACEAE



19 *Machaerium cirriferrum*
FABACEAE



20 *Piptadenia anolidermis*
FABACEAE

Tropical America – Moist Forest

WOODY PLANTS with SPINES and THORNS

Robin Foster, Brenda Lin, Margaret Metz, Tyana Wachter

Photos by: R. B. Foster & T. S. Wachter. Produced by: R. B. Foster, B. B. Lin, M. R. Metz, with support from the Andrew Mellon Foundation.

© Environmental & Conservation Programs, The Field Museum, Chicago, IL 60605 USA. [RRC@fmnh.org] Rapid Color Guide # 23 version 1.4



21 *Xylosma chlorantha*
FLACOURTIACEAE



22 *Poulsenia armata*
MORACEAE



23 *Pisonia aculeata*
NYCTAGINACEAE



24 *Ximenea americana*
OLACACEAE



25 *Seguiera*
PHYTOLACCACEAE



26 *Guadua*
POACEAE



27 *Rubus*
ROSACEAE



28 *Guettarda foliacea*
RUBIACEAE



29 *Randia aculeata*
RUBIACEAE



30 *Randia armata*
RUBIACEAE



31 *Uncaria guianensis*
RUBIACEAE



32 *Zanthoxylum ekmanii*
RUTACEAE



33 *Zanthoxylum* (juv.)
RUTACEAE



34 *Smilax*
SMILACACEAE



35 *Solanum viridipes*
SOLANACEAE



36 *Byttneria aculeata*
STERCULIACEAE



37 *Jacquinia macrocarpa*
THEOPHRASTACEAE



38 *Celtis iguanaea*
ULMACEAE



39 *Urera baccifera*
URTICACEAE



40 (helecho arboreo)
PTERIDOPHYTA