

PLANTAS ACUATICAS: Guía para Principiantes

Vali J. Pott, Robin B. Foster, Blanca Leon

Fotos de: R. B. Foster & T. S. Wachter, con B. Leon. Producido por: R. B. Foster & M. R. Metz, con el apoyo del Andrew Mellon Foundation. [www.fmnh.org/plantguides]
 ©V.J. Pott-EMBRAPA; y Environmental & Conservation Programs, The Field Museum, Chicago, IL 60605 USA. [RRC@fmnh.org] Rapid Color Guide #9 version 1.7



1 **Hygrophila guianensis**
ACANTHACEAE



2 **Echinodorus paniculatus**
ALISMATACEAE



3 **Sagittaria rhombifolia**
ALISMATACEAE



4 **Sagittaria guayanensis**
ALISMATACEAE



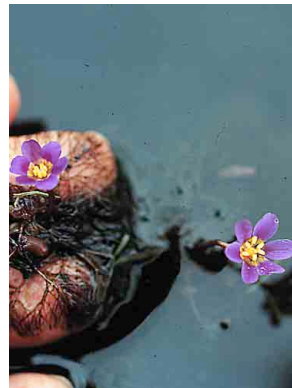
5 **Hydrocotyle ranunculoides**
APIACEAE



6 **Pistia stratiotes**
ARACEAE



7 **Enydra anagallis**
ASTERACEAE



8 **Cabomba furcata**
CABOMBACEAE



9 **Canna glauca**
CANNACEAE



10 **Cyperus giganteus**
CYPERACEAE



11 **Eleocharis**
CYPERACEAE



12 **Rhynchospora corymbosa**
CYPERACEAE



13 **Scirpus cubensis**
CYPERACEAE



14 **Aeschynomene**
FABACEAE



15 **Neptunia natans**
FABACEAE



16 **Hydrolea spinosa**
HYDROPHYLLACEAE



17 **Lemna aequinoctialis**
LEMNACEAE



18 **Utricularia gibba**
LENTIBULARIACEAE



19 **Limnocharis flava**
LIMNOCHARITACEAE



20 **Thalia geniculata**
MARANTACEAE

Tropical America AQUATIC PLANTS: Guide for Beginners

Vali J. Pott, Robin B. Foster, Blanca Leon

Photos by: R. Foster & T. Wachter, con B. Leon. Produced by: R. B. Foster & M. R. Metz with support from the Andrew Mellon Foundation. [www.fmnh.org/plantguides]
©V.J. Pott-EMBRAPA; and Environmental & Conservation Programs, The Field Museum, Chicago, IL 60605 USA. [RRC@fmnh.org] Rapid Color Guide # 9 version 1.7



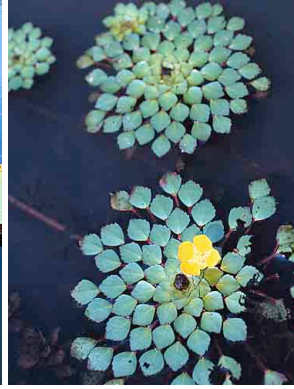
21 *Mayaca fluviatilis*
MAYACEAE



22 *Nymphaea*
NYMPHAEACEAE



23 *Victoria amazonica*
NYMPHAEACEAE



24 *Ludwigia sedoides*
ONAGRACEAE



25 *Ludwigia helminthorrhiza*
ONAGRACEAE



26 *Ludwigia lagunae* cf.
ONAGRACEAE



27 *Paspalum repens*
POACEAE



28 **PODOSTEMACEAE**



29 *Polygonum punctatum*
POLYGONACEAE



30 *Eichhornia azurea*
PONTEDERIACEAE



31 *Eichhornia azurea*
PONTEDERIACEAE



32 *Eichhornia crassipes*
PONTEDERIACEAE



33 *Eichhornia crassipes*
PONTEDERIACEAE



34 *Pontederia parviflora*
PONTEDERIACEAE



35 *Bacopa myriophylloides*
SCROPHULARIACEAE



36 *Typha domingensis*
TYPHACEAE



37 *Azolla* *Salvinia*
PTERIDOPHYTA



38 *Ceratopteris pteridoides*
PTERIDOPHYTA



39 *Equisetum giganteum*
PTERIDOPHYTA



40 *Ricciocarpus natans*
BRYOPHYTA